



Lancaster &  
Morecambe  
College

Part Time & Professional

# Adult Courses



- ▶ Update your current job role
- ▶ Train for a brand new career
- ▶ Learn new skills

Version **2**



Lancaster &  
Morecambe  
College

# Welcome

At Lancaster & Morecambe College, we are committed to supporting our community, individuals and businesses to thrive, especially important now as we start to recover from the impact of Covid-19.

In the 2020 inspection of the College, Ofsted recognised the quality and impact of our adult education provision based on the feedback and experiences of our students. *"Learners on adult learning programmes brim with enthusiasm about their learning. They feel very well supported by their tutors and they appreciate the flexibility that allows them to balance their learning with family life. Learners say that they have fallen in love with learning (and) feel that their learning programmes help them to achieve their full potential."*

So, whether it is for pleasure, up-skilling or career development, you will find many opportunities to learn. You may be an employer looking for solutions for your workforce development and we offer a range of face to face, distance and blended learning opportunities to facilitate access for all. As a Director of Lancaster & District Chamber of Commerce I work closely with many businesses to understand their current and future training needs.

We also have a range of specific advice and open days to explore our campus further, please see the back cover for details. I look forward to seeing you around our contemporary, safe and inclusive campus, and hope you enjoy finding out about the great opportunities for you.

**Wes Johnson** *Principal,*  
*Lancaster & Morecambe College*

# LMC and you



We're proud to be growing our Community Provision at Lancaster & Morecambe College and offering accessible qualifications to those looking to upskill, retrain, or find a new hobby. In my role as Adult & Community Manager, my goal is to offer courses to local residents and expand our offering for adults; from Gym Instructing and Barbering, to Creating a Business Start-up and Essential Digital Skills. All of our Part Time courses are designed to work around your lifestyle, commitments and pace of learning.

The College is part of the Community Learning Network along side local organisations, community centres, charities, parent groups and support groups, offering funded courses to meet yours and your group's needs. So, if you can't find what you're looking for, please get in touch.

**Becky Davenport,**

*Adult and Community Manager, Lancaster & Morecambe College*

**[b.davenport@lmc.ac.uk](mailto:b.davenport@lmc.ac.uk) • 01524 521490**

**[lmc.ac.uk/community](http://lmc.ac.uk/community) • [lmc.ac.uk/part-time](http://lmc.ac.uk/part-time)**





## Health & Safety

### **Emergency First Aid at Work** QNUK ◀ [more information here](#)

23/11/2021	Tue, 9am-4.30pm	1 day	£110
------------	-----------------	-------	------

### **Food Safety in Catering** Qualsafe Level 2 Award ◀

16/09/2021	Thur, 9am-4.30pm	1 day	£110
------------	------------------	-------	------

18/11/2021	Thur, 9am-4.30pm	1 day	£110
------------	------------------	-------	------

### **Health & Safety in the Workplace** Qualsafe Level 2 Award ◀

Coming soon	Mon, 9am-4.30pm	1 day	£110
-------------	-----------------	-------	------

### **IOSH Managing Safely** ◀

14/09/2021	Mon, Tue, & Wed, 9am-4.30pm	1 week	£350
------------	-----------------------------	--------	------

### **IOSH Working Safely** ◀

10/09/2021	Wed, 9am-4.30pm	1 day	£600
------------	-----------------	-------	------

### **Principles of Risk Assessment** - Qualsafe Level 2 Award ◀

Coming soon	Tue, 9am-4.30pm	1 day	£110
-------------	-----------------	-------	------

### **Cleaning Knowledge and Skills** - Level 2 ◀

Distance Learning - can start at any time	25 weeks	FREE
---	----------	------

To apply for any of these courses visit [lmc.ac.uk/part-time](http://lmc.ac.uk/part-time)





## Arts & Creative

### **Photography** UAL Level 2 Award ◀ [more information here](#)

14/09/2021

Wed, 6pm-9pm

12 weeks

£150

### **Printmaking** UAL Level 2 Award ◀

28/09/2021

Tue, 6pm-9pm

12 weeks

£150

### **Creative Craft** NCFE UAL Level 1 Award ◀

28/09/2021

Tue, 6pm-9pm

13 weeks

£130

### **Drawing** UAL Level 2 Award ◀

05/09/2021

Tue, 6pm-9pm

12 weeks

£130

### **Skills for Music and Music Technology (Multi-Track Audio Recording)** Level 2 Award ◀

29/09/2021

Wed, tbc

12 weeks

£150

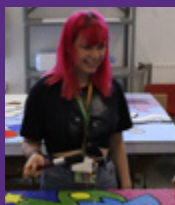
### **Skills for Music and Music Technology (Sound Production & Recording)** Level 2 Award ◀

28/09/2021

Tue, tbc

12 weeks

£150



## LMC art in the community

Our Level 2 Art & Design learners are helping to change the face of Morecambe by adding their own colourful creations to the infamous strip of artwork on the promenade.

Learn more about our courses at [lmc.ac.uk/courses/16-18](https://lmc.ac.uk/courses/16-18)



## Hair & Beauty

### **Hairdressing** Level 2 Certificate ◀ [more information here](#)

15/09/2021	Wed, 5pm-8.30pm	33 weeks	£337
------------	-----------------	----------	------

### **Hairdressing** Level 3 Certificate ◀

15/09/2021	Wed, 4.30pm-9pm	33 weeks	£1,645
------------	-----------------	----------	--------

### **Barbering** Level 2 Certificate ◀

14/09/2021	Tue, 5pm-8.30pm	33 weeks	£294
------------	-----------------	----------	------

### **Beauty Therapy** Level 2 Certificate ◀

14/09/2021	Tue, 5.30pm-8.30pm	30 weeks	£510
------------	--------------------	----------	------

### **Beauty Therapy** Level 3 Certificate ◀

14/09/2021	Tue, 5pm-9pm	32 weeks	£1,645
------------	--------------	----------	--------

### **Nail Technology** Level 2 Certificate ◀

15/09/2021	Wed, 5pm-8.30pm	33 weeks	£345
------------	-----------------	----------	------

# The Salon

Hairdressing & Beauty Therapy

We offer a range of luxurious beauty therapy treatments and hairdressing services including barbering at an affordable price in our modern, industry standard salons.

## Call 01524 521229

or [lmc.ac.uk/facilities](http://lmc.ac.uk/facilities)



## Environmental & Animal

**Practical Animal Care Skills** Level 2 ◀ [more information here](#)

20/09/2021

Mon, tbc

34 weeks

£350

**Environmental Awareness** Level 1 ◀

05/09/2021

tbc

12 weeks

FREE



Local parents from Lancaster Ryelands Primary and Nursery School have been undergoing a FREE 5-week cooking course with our Hospitality & Catering tutors, Adrian & Lindsey, as part of our new community project; Educate to Plate. Some of their creations include lasagne, garlic bread & sugar donuts. Find out more about how you can get involved at

[lmc.ac.uk/community](http://lmc.ac.uk/community)

**Coulson's Restaurant**  
*Open for themed lunches during term time*



**Call 01524 521224** for more information or [lmc.ac.uk/facilities](http://lmc.ac.uk/facilities)



## Construction & Engineering

**MIG Welding Introduction** C&G Level 1 Award [◀more information here](#)

**MMA Welding Introduction** C&G Level 1 Award [◀](#)

**TIG Welding Introduction** C&G Level 1 Award [◀](#)

05/10/2021	Tues & Wed, 6pm-9pm	16 weeks	£150
------------	---------------------	----------	------

22/02/2022	Tues & Wed, 6pm-9pm	16 weeks	£150
------------	---------------------	----------	------

**MIG Welding** C&G Level 2 Award [◀](#)

**MMA Welding** C&G Level 2 Award [◀](#)

**TIG Welding** C&G Level 2 Award [◀](#)

05/10/2021	Tues & Wed, 6pm-9pm	16 weeks	£150
------------	---------------------	----------	------

22/02/2022	Tues & Wed, 6pm-9pm	16 weeks	£150
------------	---------------------	----------	------

**Intro to Construction Environment** Level 1 Award [◀](#)

28/09/2021	Tue, 6pm-9pm	10 weeks	£150
------------	--------------	----------	------

29/09/2021	Wed, 6pm-9pm	10 weeks	£150
------------	--------------	----------	------

11/01/2022	Tue, 5pm-9pm	10 weeks	£150
------------	--------------	----------	------

**LMC Gas Centre**

Call **01524 521239** or [lmc.ac.uk/facilities](http://lmc.ac.uk/facilities)

Now offering  
**LPG Changeover**  
Call for more details







## English & Maths

### **English GCSE** Level 2 ◀ [more information here](#)

14/09/21	Tues, 6pm-8.30pm - LMC	1 year	FREE
----------	------------------------	--------	------

15/09/21 & 17/09/21	Wed, 6pm-8.30pm & Fri 9.30am-12pm - MLC	1 year	FREE
---------------------	---	--------	------

### **Maths GCSE** Level 2 ◀

14/09/21	Tues, 5.30pm-8pm - LMC	1 year	FREE
----------	------------------------	--------	------

15/09/21 & 16/09/21	Wed, 6pm-8.30pm & Thu 9.30am-12pm - MLC	1 year	FREE
---------------------	---	--------	------

### **Functional Skills English** Edexcel Level 1 Award ◀

Distance Learning - can start at any time	10 weeks	FREE
---	----------	------

### **Functional Skills English** Edexcel Level 2 Award ◀

Distance Learning - can start at any time	16 weeks	FREE
---	----------	------

### **Functional Skills Maths** Edexcel Level 1 Award ◀

Distance Learning - can start at any time	10 weeks	FREE
---	----------	------

### **Functional Skills Maths** Edexcel Level 2 Award ◀

Distance Learning - can start at any time	16 weeks	FREE
---	----------	------

### **Introduction to Creative Writing** Level 1 ◀

05/09/21	tbc	34 weeks	£130
----------	-----	----------	------

### **ESOL** ◀ See advert on page 15

Phone 01524 521385 for details	FREE
--------------------------------	------



## Business

**Accounting** AAT Level 2 Foundation Certificate ◀ [more information here](#)

14/09/21	Tue, 9am-4pm	34 weeks	£595
----------	--------------	----------	------

**Accounting** AAT Level 3 Advanced Diploma ◀

15/09/2021	Wed, 9am-4pm	30 weeks	£2573
------------	--------------	----------	-------

**Accounting** AAT Level 4 Professional Diploma ◀

Coming soon	tbc	tbc	£xx
-------------	-----	-----	-----

**Accounting Software** AAT Level 2 Foundation Award ◀

Coming soon	tbc	tbc	£xx
-------------	-----	-----	-----

**Creating a Business Start-Up** NCFE Level 2 Certificate ◀

05/01/22	Wed, 6pm-8.30pm	30 weeks	£250
----------	-----------------	----------	------

**Taxi & Private Hire Driving** ◀

25/09/2021	Tue-Fri, 9am-5pm	4 days	£225
------------	------------------	--------	------

18/10/2021	Mon-Thur, 9am-5pm	4 days	£225
------------	-------------------	--------	------

23/11/2021	Tue-Fri, 9am-5pm	4 days	£225
------------	------------------	--------	------

**Equality & Diversity** - Level 2 ◀

Distance Learning - can start at any time	18 weeks	FREE
---	----------	------

To apply for any of these courses visit [lmc.ac.uk/part-time](http://lmc.ac.uk/part-time)

## **Information, Advice and Guidance** Level 2 ◀

Distance Learning - can start at any time

25 weeks

FREE

## **Lean Organisation Management Techniques** Level 2 ◀

Distance Learning - can start at any time

25 weeks

FREE

## **Principles for Digital Skills in Employment** Level 2 ◀

Distance Learning - can start at any time

25 weeks

FREE

## **Principles of Business Administration** Level 2 ◀

Distance Learning - can start at any time

25 weeks

FREE

## **Principles of Customer Service** Level 2 ◀

Distance Learning - can start at any time

25 weeks

FREE

## **Principles of Team Leading** Level 2 ◀

Distance Learning - can start at any time

25 weeks

FREE



## **Fitness**

### **Certificate in Gym Instruction** NCFE Level 2 ◀ [more information here](#)

05/09/21

tbc, tbc

25 weeks

£362

## **Can't find the course you're looking for?**

We're always looking to expand our Part Time offer, so let us know which courses you'd like to study with us. **Let us know your feedback: [lmc.ac.uk/part-time](https://lmc.ac.uk/part-time)**



## IT & Computing

### **Essential Digital Skills** Entry Level 3 ◀ [more information here](#)

tbc	tbc	12 weeks	FREE
-----	-----	----------	------

### **Essential Digital Skills** Level 1 ◀ [more information here](#)

tbc	tbc	12 weeks	FREE
-----	-----	----------	------

### **Excel Beginners** ◀

14/09/2021 and 28/10/21	1 week	£80
-------------------------	--------	-----

### **Excel Intermediate** ◀

21/09/2021 and 04/11/21	1 week	£80
-------------------------	--------	-----

### **Excel Advanced** ◀

28/09/2021 and 11/11/21	1 week	£80
-------------------------	--------	-----

### **IT Users (ITQ)** Level 2 ◀

14/09/21	Tue, 10am-12.30pm - MLC	34 week	£292
----------	-------------------------	---------	------

### **IT User Skills (ITQ)** Level 3 ◀

16/09/21	Thu, 9.30am-12.30 - MLC	34 week	£1,945
----------	-------------------------	---------	--------

### **IT User Skills** Level 2 ◀

Distance Learning - can start at any time	25 weeks	FREE
---	----------	------

To apply for any of these courses visit [lmc.ac.uk/part-time](http://lmc.ac.uk/part-time)





## Child Education

### **Autism** Level 2 [more information here](#)

Distance Learning - can start at any time

25 weeks

FREE

### **Understanding Behaviour That Challenges** Level 2 [more information here](#)

Distance Learning - can start at any time

25 weeks

FREE

### **Understanding Children and Young People's Mental Health** Level 2 [more information here](#)

Distance Learning - can start at any time

25 weeks

FREE

### **Preparation for a Career in Residential Childcare** [more information here](#)

25/08/2021

Wed, 9am-4.30pm

1 day

£600



## Distance Learning for you

2020/21 have certainly been unusual years and LMC has responded to the challenges the on-going Covid-19 pandemic has brought, by offering an increased number of Distance Learning modules. This has resulted in record numbers of adult students signing-up to learn a new skill or to add crucial qualifications to their CV, all from the comfort of their own home

Learn more at [lmc.ac.uk/distance](https://lmc.ac.uk/distance)



## Health & Social Care

### **End of Life Care** Level 2 [◀more information here](#)

Distance Learning - can start at any time

25 weeks

FREE

### **Awareness of Mental Health Problems** Level 2 [◀](#)

Distance Learning - can start at any time

25 weeks

FREE

### **Common Health Conditions** Level 2 [◀](#)

Distance Learning - can start at any time

25 weeks

FREE

### **Mental Health Awareness** Level 2 [◀](#)

Distance Learning - can start at any time

25 weeks

FREE

### **Preparing to Work in Adult Social Care** Level 2 [◀](#)

Distance Learning - can start at any time

25 weeks

FREE

### **Prevention & Control of Infection** Level 2 [◀](#)

Distance Learning - can start at any time

25 weeks

FREE

### **Principles of Care Planning** Level 2 [◀](#)

Distance Learning - can start at any time

25 weeks

FREE

### **Principles of Dementia Care** Level 2 [◀](#)

Distance Learning - can start at any time

25 weeks

FREE

To apply for any of these courses visit [lmc.ac.uk/part-time](http://lmc.ac.uk/part-time)

## **Principles of Working with Individuals with Learning Disabilities** Level 2◀

Distance Learning - can start at any time

25 weeks

FREE

## **Safe Handling of Medicines** Level 2◀

Distance Learning - can start at any time

25 weeks

FREE

## **Safeguarding & Dignity in Adult Social Care** Level 2◀

Distance Learning - can start at any time

25 weeks

FREE

## **Self-harm and Suicide Awareness Prevention** Level 2◀

Distance Learning - can start at any time

25 weeks

FREE

## **Understanding Care & Management of Diabetes** Level 2◀

Distance Learning - can start at any time

25 weeks

FREE

## **Understanding Nutrition & Health** Level 2◀

Distance Learning - can start at any time

25 weeks

FREE

## **Would you like to improve your English & Maths skills?**

### **Or is English your second language?**

If you are looking to develop your skills in reading, writing, grammar, punctuation, speaking and listening then our English & Maths Functional Skills and ESOL courses are for you. Courses are designed to help in all aspects of life and work. Classes are available during the day and evening at various venues within the Lancaster and Morecambe area.

**Contact 01524 521385 for more information**

## **FREE Level 3 Vocational Courses for Adults**

The National Skills Fund is a government initiative which aims to help adults train and gain valuable vocational skills, by removing the age constraints and financial barriers for those who have not yet gained a Level 3 qualification. Adult learners will be able to access fully funded courses that will boost their career, increasing their opportunities to gain promotion and career progression within their current workplace, or allowing them to retrain for a new career. Learn more at [lmc.ac.uk/news](https://lmc.ac.uk/news)



We also offer:

- **Full Time courses**
- **Apprenticeships**
- **Traineeships**
- **Distance Learning**

**[lmc.ac.uk/courses](https://lmc.ac.uk/courses)**

**0800 306 306 or 01524 521385**





## Access

### **Health & Social Care Professionals**

Access Level 2 [◀more information here](#)

20/09/2021	Mon, 9.15am-12.15pm	12 weeks	£121
07/03/2022	Mon, 9.15am-12.15pm	12 weeks	£121

### **Health & Social Care Professionals** Access Level 2 Extended Certificate [◀](#)

20/09/2021	Mon, 9.15am-12.15pm	12 weeks	£161
07/03/2022	Mon, 9.15am-12.15pm	12 weeks	£161

### **Certificate in Education and Training** Level 4 [◀](#)

05/09/2021	Tue, 5.30pm-8.30pm	28 weeks	£2,834
------------	--------------------	----------	--------

To apply for any of these courses visit [lmc.ac.uk/part-time](http://lmc.ac.uk/part-time)



EMPLOYER  
**HUB**  
@LMC

## EMPLOYER HUB

Are you planning a big event or just need to get out of the office for a few hours to discuss strategy?

Call **01524 521483** today or visit [lmc.ac.uk/employers](http://lmc.ac.uk/employers)

# What next?

Click the **live link** in this document on the course that you're interested in or visit **[lmc.ac.uk/adult-courses](https://lmc.ac.uk/adult-courses)** and

## ENQUIRE ONLINE

A member of our team will be in contact with you within 5 working days to discuss the course suitability with you.

If this is the course for you, you will be provided with a link to enrol to the course.

## APPLY ONLINE

A member of our admissions team will be in contact with you within 5 working days to arrange a suitable interview date and time. Once interviewed and you have accepted a place on the course, you will be able to secure your place by enrolling online.

## ENROL ONLINE

To complete your enrolment you will need your national insurance number and a photograph or scanned image of any benefit evidence. Once your enrolment is complete you will be contacted by our team with the relevant next steps.

## Can I study for free?

If you are 23 or under in September 2021 and studying for your **FIRST FULL LEVEL 2** or **FIRST FULL LEVEL 3** course, this may be **FREE** – please ask us if you need further information.

You may also be eligible for **FREE** study if you are unemployed and receive an eligible benefit and you are taking the course to help you find employment. You may be eligible for a subsidised rate of **£25 per course** if you are employed and in receipt of certain benefits shown below.

If you do not already have a Maths or English GCSE grade C/4 or higher you can study GCSEs for **FREE**

Benefit	Employed	Waived	Fee	Evidence
JSA	N	Full	Zero	In date letter/submit screen shot of account
ESA (WRAG)	N	Full	Zero	In date letter/submit screen shot of account
ESA Contribution Based	Y	Partial	£25	In date letter/submit screen shot of account
Universal Credit	N	Full	Zero	In date letter/submit screen shot of account
	Y	Full	Zero	(If earning under £17,374.50)
In receipt of another state benefit other than the above				In date letter/submit screen shot of account

## Aged 18 or under?

Whilst you can take the courses listed in this guide, we have a wider choice of courses available that you can study for free in our **[College Guide](#)**.

Please contact us on **0800 306 306** or **01524 521385** for advice on the best course for you, or visit our website **[lmc.ac.uk](https://lmc.ac.uk)**

## Aged 19 or over?

If you are aged 19 and over, the Government **Advanced Learner Loan** scheme offers you the chance to study without any costs up front. The loans are non means tested and you would not make any repayments until April 2022, and then only if you are earning more than £27,295 per year.

More information call us on **01524 521385** or visit **[lmc.ac.uk/student-life/financial-support](https://lmc.ac.uk/student-life/financial-support)**

Follow us for updates



Find out more

**0800 306 306 or  
01524 521385**

**hello@lmc.ac.uk**

**lmc.ac.uk**



Lancaster &  
Morecambe  
College

# Come to one of our **Open Evenings**

## **Autumn Open Evening**

12 October - 4-7pm

## **Open Evening**

with guests from the Hospitality industry

16 November - 4-7pm

## **Apprenticeship Open Day**

1 February 2022

## **Open Evening & Creative Career Expo**

8 March 2022

## **Community Open Day**

with Advice & Applications

2 July 2022