



Lancaster &
Morecambe
College

COLLEGE GUIDE

Full Time Courses and Apprenticeships

2022/23



To find out more call

0800 306 306

or visit

lmc.ac.uk





Lancaster &
Morecambe
College

Contents

Welcome to our College	page 4
We're Here to Help	page 6
Financial Support	page 8
Student Voice - Have Your Voice Heard	page 10
More Than Classrooms	page 12
Get Career Ready	page 14
Entry Requirements	page 15
Apprenticeships & Traineeships	page 16
Industry Work Placements	page 18
At the Heart of Lancaster & Morecambe	page 20
Information for Parents & Guardians	page 22
Our Courses...	page 23
Employer Engagement	page 108

Welcome to our College



Learners say that they have fallen in love with learning again and their programmes help them to achieve their full potential.

Ofsted Inspection Report, March 2020.



Welcome to Lancaster & Morecambe College's 2022 Course Guide and thank you for showing interest in being part of our College, an organisation of which I am very proud to be Principal.

It is really important that you make the best choice for you, so we encourage all of our prospective students to really understand their career plans for the future and to understand the industries that they're planning to join, and we are on standby to support that journey.

Our entire provision is shaped in partnership with local employers to ensure that you acquire the knowledge, skills and behaviours required in your chosen industry. We've also invested around £15 million in our campus so you can be assured that when you're studying on your course, you have access to state-of-the-art equipment.

We look forward to welcoming you to one of our Open Days, and hopefully to welcoming you to the campus as a student or an apprentice in the future.

Wes Johnson, Principal

We're here to help

LMC is proud to be the community's provider of technical, professional and creative education, focused on providing young people with the skills and knowledge to enable them to progress into employment or onto further study.

For more information [**lmc.ac.uk/support**](https://lmc.ac.uk/support)



Free or discounted
return bus service



Free breakfast on arrival
at College



Industry links to over
700 local employers



94% progression rate
upon graduating

Student Engagement

There's no problem too big or small, The Hexagon boasts a range of resources to help you with assignment work and the Student Engagement Team can support with careers guidance, job searching, UCAS applications and CV writing.

Learning Support

Working with you to identify the support required, the Learning Support Team will agree where and how reasonable adjustments can help you to study and achieve.

Equality, Diversity & Inclusion

All of our activities are determined by a desire to ensure that all members of the College have an equal opportunity to maximise their potential and are all equally valued and treated with respect.

Safeguarding

Working alongside a range of external agencies to ensure all of our learners get the support they require, our Pastoral Team are here when it comes to your safety and welfare.



Financial Support

Based in The Hex, our Student Money Team will help you identify and access any support that may be available whilst you're studying at College, from bursaries to course expenses, we're here to help with your money worries.

- Learner Support Fund
- 16-18 Vulnerable Bursary
- Childcare
- Travel Costs
- Breakfasts & Lunches
- Course & Exam Fees
- Advanced Learner Loans

For more information lmc.ac.uk/studentmoney





Free bus service

We know that many people who would like to study with us, live some distance away from Lancaster & Morecambe College; that's why we offer Full Time students daily return transport during term time.

Even if you don't live on a College bus route, you may still qualify for free or discounted travel to LMC.

For more information lmc.ac.uk/bus



**Student
VOICE**



Have Your Voice Heard

A student-focused community with like-minded people from other subject areas, supporting the College at events, discovering new opportunities and making a change within the College Community.

Join the Student Voice throughout your studies to make the most of your time with us at College, and beyond.

For more information [**lmc.ac.uk/studentvoice**](https://lmc.ac.uk/studentvoice)



More Than Classrooms

We aim to enrich the student experience by offering a variety of exciting opportunities to develop both industry and social skills. At LMC, you'll have the opportunity to experience trips to local, regional, and international destinations, meet industry guest speakers, take part in relevant work experience placements and participate in National Citizen Service (NCS) and Duke of Edinburgh programmes.

For more information [**lmc.ac.uk/student-life**](https://lmc.ac.uk/student-life)







Get career ready



Whichever industry you want to work in, English & Maths skills are important. To prepare directly for employment or university, you'll need to have grade 9-4 GCSE in both English & Maths, and we'll do all we can to support you to achieve this.



If you leave school without grade 9-4 at GCSE, during your time at LMC you'll work towards GCSE or Functional Skills. If you have a grade 3, you'll study the GCSE as part of your course.

For more information lmc.ac.uk/english-maths

You'll find more information at lmc.ac.uk

Entry requirements

Our courses offer academic progression and there's a course for you whatever your starting point. Each course may have specific entry requirements but this flow chart will help you decide which Level may be right for you, based on your predicted grades.

ENTRY

1

No formal qualifications.

2

3 GCSEs at grade G/1 or higher plus grade F/2 or higher in English or Maths.

3

4 GCSEs at grade D/3 or higher including English or Maths OR a Level 1 related qualification PLUS grade D/3 or higher in English or Maths.

4

5 GCSEs at grade C/4 or higher including English and Maths OR a Level 2 related qualification PLUS grade C/4 or higher in both English & Maths.

5

From 64 UCAS points dependent on course PLUS grade C/4 or higher in both GCSE English & Maths, or Advanced Apprenticeship, or equivalent experience.

From 64 UCAS points dependent on course PLUS grade C/4 or higher in both GCSE English & Maths, or Advanced Apprenticeship, or equivalent experience.

Every course we offer requires enthusiasm for the subject area as well as a commitment to study and the ability to work independently. Some of our courses also require you to demonstrate good interpersonal skills.

St John's Hospice

Your care
in our hands



Caring for patients and families
affected by life limiting conditions
in North Lancashire and the South



Built by the people, for the people

www.sjhospice.org.uk

St John's Hospice, Lancaster LA2 9JL Tel: 01524 862100 Charity Number 1054901

Apprenticeships & Traineeships

An Apprenticeship is the perfect choice if you want to continue your studies by developing your skills, knowledge and behaviours, whilst also earning a salary, and it can be your first step in helping to decide on a long-term career.

You can either apply for an Apprenticeship course and be matched with a local employer, or you could apply to a specific vacancy already listed.

Not quite ready for an Apprenticeship?

A Traineeship helps to boost your prospects by offering the skills and experience that employers are looking for and, upon completion, allows you to progress onto an Apprenticeship or Full Time course.

For more information [**lmc.ac.uk/apprenticeships**](https://lmc.ac.uk/apprenticeships)
or [**lmc.ac.uk/traineeships**](https://lmc.ac.uk/traineeships)

Industry Work Placements

Industry Work Placements are an innovative way to enable you to develop the skills and knowledge required, to get ahead in your career. Students on Full Time courses are matched with local employers for a minimum of 45 days, over the duration of their studies, to build their confidence, and develop their knowledge in the industry.

“

My favourite thing about my work placement is meeting new people and hearing about their journey into the industry.

It's actually given me the opportunity to learn new things and understand the theory, because you're in the environment and you're seeing it first hand. You witness all of the day-to-day intricacies that make the work happen.

”

Construction Level 3 student
Industry Work Placement at John Turner Construction



At the heart of Lancaster & Morecambe

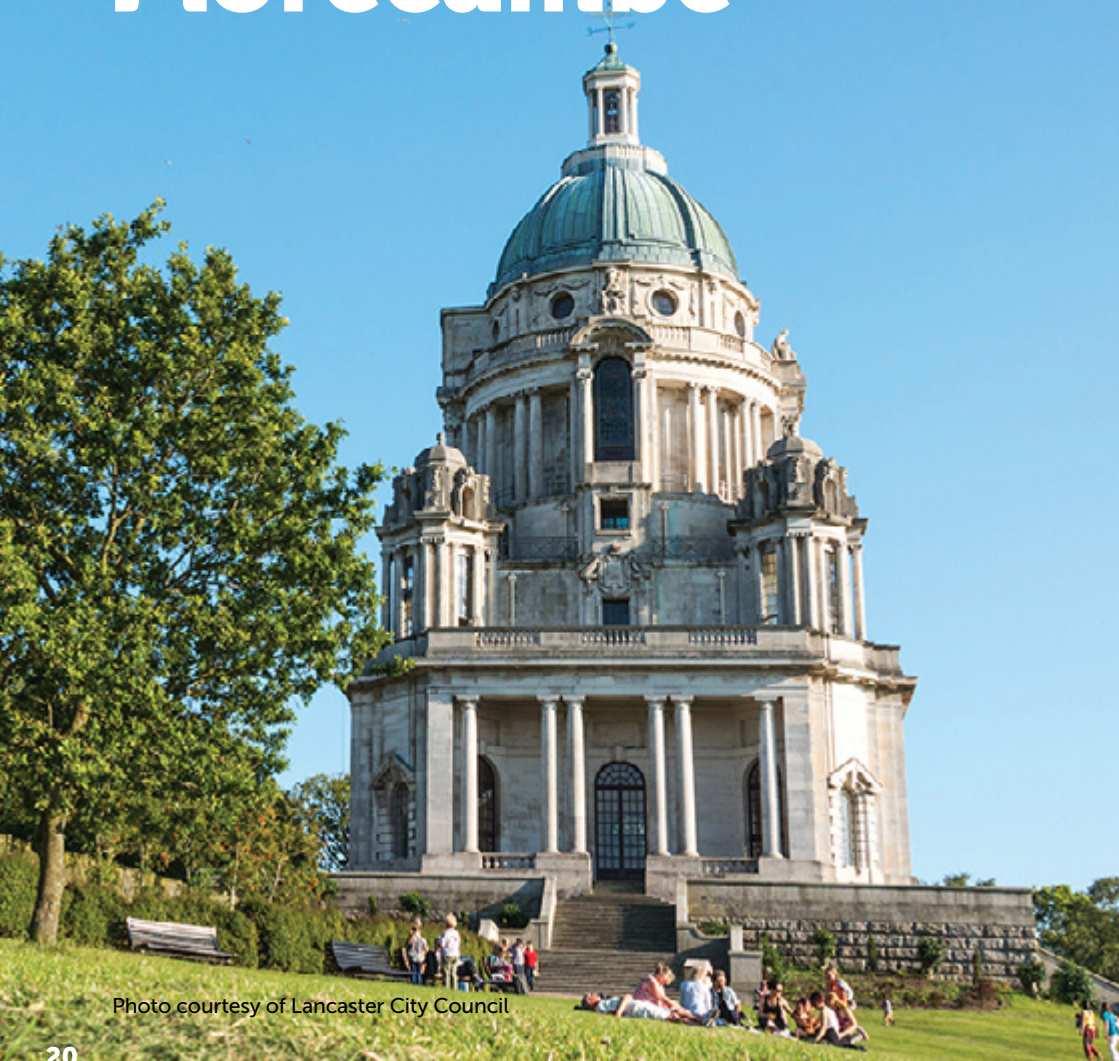


Photo courtesy of Lancaster City Council



Photo courtesy of Lancaster City Council

We're proud to be at the heart of our community providing technical, professional and creative education, focused on providing young people and adults with the skills and knowledge to enable them to progress into employment or onto further study.

Working closely with employers

We receive industry feedback to shape every curriculum pathway, ensuring our graduating students are highly employable with the skills that local businesses need.

For more information [**lmc.ac.uk/about**](https://lmc.ac.uk/about)

Information for Parents & Guardians

We're focused on preparing our students for real careers, independence, and positive progression in the future, with a set of skills and experience that sets them apart from the competition.

94% of LMC students progress onto university, employment, or further study upon completion of their course, and we're proud to have strong links with local Higher Education providers and employers across the region.

Learners and apprentices work well together with their employers, peers and their tutors. Consequently, they effectively develop skills such as confidence, resilience, patience, communication and independence. Learners develop an understanding of living in a diverse community and appreciate and understand each other's differences.

An Ofsted rated 'GOOD' College, 2020

For more information lmc.ac.uk/parents



Our Courses...

Access to Higher Education

The Access Diploma is specifically designed for people aged 19 years and over who want to progress onto university. Perhaps you've taken a break from education due to other commitments but have always wanted to gain a qualification. Whatever your situation, the Access Diploma offers you the opportunity to gain a qualification that could open the doors to university for you.

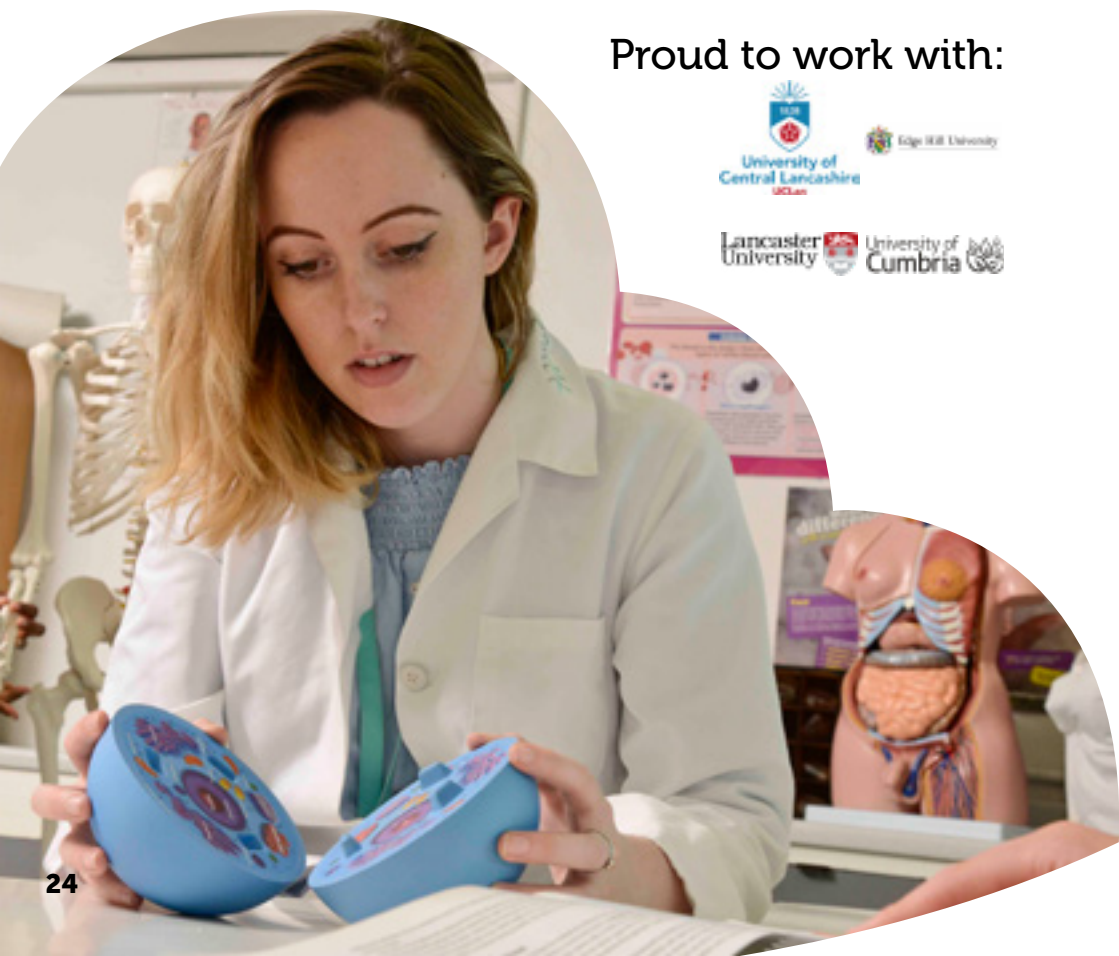
Taught by professionals

You will be taught by experts in their own fields

The adult alternative to A Levels

An entry route to degree courses at universities or to further training

Proud to work with:



Progression opportunities

Access to HE will prepare you to progress onto a Higher Education course, whether that's a HNC, HND, or a course at university.

Past students have gone on to study various degree level courses including:

- Primary Teaching
- Nursing
- Social Work
- Social Sciences

And have progressed to universities such as:

- Lancaster University
- University of Cumbria
- University of Central Lancashire
- Edge Hill University

Funding your course

If you're aged 19-23 and don't have a full Level 3 qualification, you may be able to study the Access Diploma for free. If you do have to pay fees, Advanced Learner Loans are available to fund course fees and expenses. If you undertake an Access Diploma and then go on to complete a university degree course, the outstanding balance of the Advanced Learner Loan is written off. Consequently, the course could be free.

“

The most satisfying part of my role is helping my students take the first step towards fulfilling their ambitions to go to university and, eventually, progressing into their dream careers.

Laura Walker,
Access to HE Tutor

”



Access to HE students' success in Ascentis' Excellence Awards 2021

Two Access to HE students have been awarded first place and runner-up prizes in the national Ascentis Excellence Awards 2021, following their continuous efforts and achievement on the course. In addition, the students were gifted a cheque to help support their ongoing studies.

"The Access course made me feel understood, heard, and cared for. I don't think I've ever felt so settled nor so passionate about what I'm doing and I just feel so excited to see where university will take me. I have loved every minute of it!"

Charlotte Triolaire, Access to HE



Full Time Courses - see page 15 for entry requirements

Access to HE

Level 3 • 1 year

The adult alternative to A Levels for ambitious adults who aspire to progress to university or improve their career prospects.

Previous students have progressed into various careers, including:

- **Nursing and Health Professions:**
Adult Nurse, Mental Health Nurse, Midwife, Radiographer, Occupational Therapist, Physiotherapist and Paramedic.
- **Teaching:**
Primary School Teacher, Learning Support Worker, Teaching Assistant and Special Needs Education Worker.
- **Social Work:**
Social Worker, Counsellor, Probation Worker, Youth Worker and Welfare Officer.
- **Higher Education:**
Degree options include for example: Biological Science, Business, Psychology, Humanities and Social Sciences.

Additional entry requirements:

A range of evidence may be considered when assessing an individual's potential to study an Access Diploma, for example; their life skills, previous employment, prior achievements and professional qualifications.

However, the general expectation is that a student will:

- Have good Level 2 skills reflecting ability equal to 5 GCSEs at grade C/4 or above, or any equivalent professional qualification; and
- Completion of the initial assessment to a satisfactory level.

The offer of a place will be determined by the following three factors:

- The student's performance at interview;
- The successful completion of the assessment; and
- The consideration of prior achievements and/or qualifications.

Different universities and courses have different entry requirements. It is the student's responsibility to check that these would be met when applying for an Access to HE Diploma. This could include subject specific GCSE grades and relevant experience.





Art & Design

An Art & Design course at LMC gives you access to fantastic industry standard facilities, surrounded by a team of designers and artists as tutors. Our students work with industry specialists in the local community and produce exciting portfolios of creative work, which demonstrate a wide set of skills. We encourage our students to be really ambitious about their future careers by applying to highly prestigious universities.

Wide variety of courses

We offer an ideal opportunity to experience a range of Art & Design options

Opens up your career pathway

Our courses offer an exciting career working in the Art & Design industry



Proud to work with:



Work placements

On our creative courses, students undertake live briefs and have the opportunity to complete a work placement. In previous years, students have worked with Digital Advantage to gain experience of working in a pop-up creative design agency. More recently, our students have been awarded a Culture Co-op Creative Commission, which links young people to themselves, others, and creative practices.

Progression Opportunities

Following the completion of an Art & Design course at LMC, many students choose to progress onto a higher level course, relevant Apprenticeship, or a Higher Education course within College, such as the Art & Design Level 4 HNC. Alternatively, many students choose to go to university.

Students may also start work in the Art & Design industry in a variety of exciting roles such as:

- Illustrator
- Fine Artist
- Set Designer
- Fashion Designer
- Photographer

“

Working with established artists is much more than a fun opportunity for students to get involved in large scale projects, in public environments. It also gives them insight into how a professional artist builds a reputation and career.

”

John Lambert,
Art & Design Programme Area
Manager



Jon Gorrigan
Foundation Art & Design
Level 3

After studying Foundation Art & Design at LMC, Jon is now a freelance photographer with a catalogue of famous subjects, including Luke Evans, Eddie Redmayne, Georgia May Jagger and Paul Weller.

Art & Design students collaborate with Steve Messam in the community

Students have been awarded a creative commission from the Culture Co-op to work with site-specific artist, Steve Messam, on the “Now You See It” project, transforming local environments.



Full Time Courses - see page 15 for entry requirements

Art & Design

Level 2 • 1 year

An introduction to the world of art and design, the course is developed to support students who would benefit from a more practical approach to learning, providing them with the transferable skills, knowledge and self-confidence required to progress to further education in art and design and/or employment within the creative industries.

Art & Design

Level 3 • 2 years

Suitable for those wishing to pursue a career in the creative industries, this course covers a broad range of specialist areas in art and design including media, techniques, and a variety of practical skills to help you identify your creative strengths and develop a project using critical and contextual awareness.

Art & Design Foundation Diploma

Level 3/4 • 1 year

This is an intensive one year course exploring a spectrum of design specialisms and builds a strong and diverse portfolio. The emphasis of the course is on experimentation and challenging preconceptions and is the perfect bridge to Higher Education.

Additional entry requirements for all courses:

To study an Art & Design course you will need

- A portfolio of work
- Enthusiasm for the subject with a commitment to study, and show good skills in practical subjects.

Art Practice HNC

Level 4 • 1 year

Art Practice at HNC Level 4 offers students a broad introduction and awareness of the key aspects of the creative industries sector through four core units; Professional Development, Contextual Studies, Individual Project, and Techniques and Processes. This effectively builds underpinning core skills gained in research, self-study, directed study and workplace scenarios.

Art Practice HND

Level 5 • 1 year

Art Practice HND Level 5 allows students to develop a sound understanding of the principles in their 'specialist pathway' of study. Students will learn to evaluate varied approaches to problem solving, effectively performing in their chosen field with the required qualities for employment in the sector.

Additional entry requirements:

- A minimum of 64 UCAS points, PLUS GCSE English and Maths at grade C/4 or higher, and have completed the HNC in Art Practice or similar.



Beauty Therapy

Studying Beauty Therapy at LMC will give you access to our industry standard facility; The Salon, plus a team of highly experienced and specialist tutors. Through their extensive knowledge, you'll learn the skills and techniques needed to establish a career in the Beauty Therapy industry. If you choose to progress through the qualification levels, you'll gain confidence in your skills and knowledge and begin to develop your individual creative talent.

Real work environment

You will be taught in our industry standard salons

Industry experienced staff

You will be taught by highly qualified industry specialist tutors

Proud to work with:

The
Salon *Eve Taylor*
Handressing & Beauty Therapy



LONDON
WELLNESS
ACADEMY

nsi
national institute for beauty therapy

Work placements

Students on a Beauty Therapy course can take part in work placements with local employers in the hair and beauty industry, this could include a beauty salon, hair salon, or a make-up counter.

Our students regularly visit local schools to manage the pupils' hair and make-up for dance and drama productions. Working on live clients throughout your studies is a great addition to your CV whilst being a student.

Progression opportunities

Following the completion of a Beauty Therapy course at LMC, many students choose to progress onto employment or self-employment, and may work across the country or internationally. Progression in the workplace can lead to management roles and after experience, your career may lead to teaching and training others.

There are many exciting career opportunities in the Beauty Therapy industry, including:

- Beauty Consultant
- Nail Technician
- Salon Manager
- Massage Therapist

“

The opportunities for your development and career options in this vocation are wide ranging; from setting up your own business, working on board luxury cruise liners, or in land-based salons and spas, both nationally and internationally, to teaching and training.

Zoe Petrou
Hairdressing & Beauty Therapy
Programme Area Manager

”



Access to industry standard facilities and clients

The Salon on campus boasts a fully equipped real-work environment, providing a range of beauty therapy services to the wider community, including massages, manicures, pedicures, holistic therapies, and waxing.

With open access to this facility alongside teaching from specialised staff with years of industry experience, you'll gain the skills, knowledge and confidence to start your own career in the Beauty Therapy sector.



Full Time Courses - see page 15 for entry requirements

Hair & Beauty Pathway

Level 1 • 1 year

All Pathway courses at LMC provide you with a positive foundation into Full Time study within the College.

The Hair & Beauty Pathway has been designed to support students who want to gain the basic knowledge of Hair & Beauty, and who may not have the mainstream entry requirements for alternative courses.

Hair & Beauty Introduction

Level 1 • 1 year

This course offers an introduction to the exciting and prosperous careers available in Hairdressing & Beauty Therapy. You will gain knowledge and learn new skills in a variety of basic Hairdressing & Beauty Therapy services, including hairstyling, skin, and nail care.

Hair & Media Make-Up

Level 2 • 1 year

This course will provide you with an excellent introduction to the Hairdressing & Beauty Therapy industries, including: the art of applying a range of make-up techniques, eye treatments, skin tanning, creative hair design, body art, colouring and dressing hair.

Beauty Therapy

Level 2 • 1 year

This course offers the opportunity to learn the skills necessary for employment in the Beauty Therapy profession. You will learn techniques which are in demand and on trend, with insight from employers in the Beauty Therapy industry.

Beauty Therapy

Level 3 • 1 year

You will focus on advanced treatments, theory elements of business promotions, relevant health and safety, and advanced treatment techniques in the beauty industry. You'll spend time gaining experience in LMC's real work environment, The Salon, and develop your customer care and communication skills, preparing you for future employment.

Additional entry requirements:

- Level 2 qualification in Beauty Therapy

Theatrical & Media Make-up

Level 3 • 1 year

Aimed at individuals who want to work within professional make-up or hair departments of TV, film, or theatre production companies, this course equips you with the knowledge required to progress onto university courses in Beauty Therapy.



Business

As a Business student at Lancaster & Morecambe College you'll become a part of the LMC Enterprise & Leadership Academy, with access to local and national business professionals who work with you to enhance your experience of enterprise, and develop your confidence and business acumen.

Wide variety of Apprenticeships

We offer an ideal opportunity to earn while you learn in a variety of Apprenticeships

Industry experienced staff

You will be taught by highly qualified industry specialist tutors

Proud to work with:

aat

FGH
SECURITY

Lancaster
University

CMI
Centre

Work placements

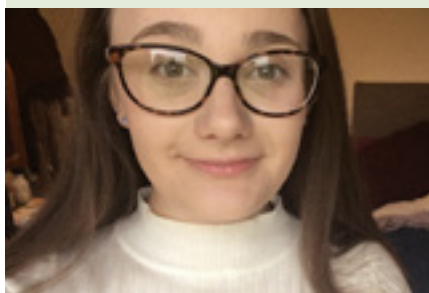
All students gain work experience throughout their course with supportive and inspiring employers, helping to enhance their employability skills and further their knowledge in their chosen area of interest. Many students have utilised their work placements to gain employment and volunteering opportunities as well as references for future applications within their career.

Progression opportunities

Following the completion of a Business course at LMC, many students choose to progress onto a higher level course, relevant Apprenticeship, or a Higher Education course at LMC or further afield at university.

There are many exciting career opportunities in the business industry, including:

- Events Manager
- Digital Marketer
- Accountant
- Social Media Manager
- Business Advisor



Shannon Harrison
Business & Enterprise
Level 3

Shannon was studying three A Levels at a grammar school when she decided that the learning environment and structure wasn't for her, so, she started searching for a qualification in one specialised subject area.

The large campus environment with industry standard facilities and opportunities for students were the deciding factors for Shannon, who took advantage of the Erasmus+ programme to Disneyland Paris and Italy, and also work experience with local employer, St John's Hospice.

Shannon is now a Marketing Assistant at LMC.

“

It's amazing to be in an environment where everyone is motivated and hungry to succeed, you learn so much from everyone's shared experiences and ideas. If you're considering studying this course, just go for it!

Olivia Hammond
Business Alumni

”



Full Time Courses - see page 15 for entry requirements

Retail Pathway

Level 1 • 1 year

All Pathway courses at LMC provide you with a positive foundation into Full Time study within the College.

This Retail Pathway is designed for students who have an interest in developing skills and knowledge related to business, administration and retail.

Business & Enterprise

Level 3 • 2 years

This course gives you the scope to develop a broader understanding of business organisations and practices, providing subject-specific skills and knowledge about markets, customers, finance, marketing, operations, communication, information technology and business strategy.

Business HNC

Level 4 • 1 year

Identifying skills gaps in the industry and through employer-led curriculum, this course will produce today's talent meeting tomorrow's needs in a business world. The Business HNC builds on your knowledge of the basic concepts of business, ensuring you'll be competent in a range of subject-specific skills, as well as general skills and qualities relevant to key areas of business.

“

Studying at LMC helped me grow my confidence so much. The support I received really helped me to achieve my qualification. It's an amazing College and I'm so grateful for the opportunities available to me.

”

Fabrizia Todd,
Business & Enterprise Alumni





Business Apprenticeships

- see page 15 for entry requirements

Business Administrator Apprenticeship

Level 3 • 18 months

This Apprenticeship focuses on the skills, knowledge and behaviours of the Business Administrator Standards, whilst working independently and as part of a team in an organisation. You will be involved in developing, implementing and improving administrative services.

Marketing Assistant Apprenticeship

Level 3 • 24 months

This Apprenticeship will focus on the skills, knowledge and behaviours of the Marketing Assistant Standards. You'll be involved in a wide range of planning, delivery and evaluation of marketing activities for the organisation, and will learn marketing theory, concepts and principles.

Digital Marketer Assistant Apprenticeship

Level 3 • 24 months

This Apprenticeship outlines, plans, builds and implements marketing promotions and monitors engagement, through a wide range of media sources, to capture customer purchases, commitment and retention.

This course aims to provide the apprentice with the knowledge and skills to be a Digital Marketer, whilst the workplace/employer will provide the hands-on experience.



Customer Service Practitioner Apprenticeship

Level 2 • 15 months

This Apprenticeship develops excellent customer service skills and behaviours as well as product and service knowledge when delivering to your customers. You will provide service in line with the organisation's standards and strategy, within appropriate regulatory requirements. Your customer interactions may cover a wide range of situations and can include; face-to-face, telephone, post, email, text and social media.

Customer Service Specialist Apprenticeship

Level 3 • 18 months

A Customer Service Specialist demonstrates professionalism towards customers and supports the organisation to analyse customer data, implement changes to improve services, and is attentive to various digital technologies.

You'll have a great deal of knowledge about the organisation's products and/or services, and act as a point of contact to support customers and colleagues with complex requests, complaints and queries.



Business Apprenticeships

- see page 15 for entry requirements

Accounts Assistant Apprenticeship

Level 2 • 15 months

This Apprenticeship will focus on developing your skills in maintaining an efficient and accurate finance function within a business. The Accounts or Finance Assistant is responsible for assisting the team of accountants with junior accounting duties.

Assistant Accountant Apprenticeship

Level 3 • 18 months

This Apprenticeship provides support within a finance function of an organisation. Part of your role will involve assisting in financial activities, such as data entry to month-end management accounts and year-end financial statements. In addition, you may be involved in regulatory financial requirements such as the completion of VAT returns or assisting in the preparation of tax computations.

Additional entry requirements:

- A Level 2 qualification in Accountancy or relevant industry experience, to be discussed at interview stage.

Professional Accounting & Taxation Technician Higher Apprenticeship

Level 4 • 18 months

This Apprenticeship will cover drafting financial statements, managing budgets and evaluating financial performance, as well as optional specialist units including business tax, personal tax, external auditing and credit management, and cash and treasury management. These are taught sessions on campus, one day a week, which are then assessed via online exams.

Additional entry requirements:

- A Level 3 qualification in Accountancy or relevant industry experience, to be discussed at interview stage.

These qualifications are accredited by the Association of Accounting Technicians (AAT)



Team Leader Apprenticeship

Level 3 • 18 months

As part of the Leadership & Management Academy, this Apprenticeship is accredited by the Chartered Management Institute (CMI). There are various areas of study explored in a challenging, informative, and fun way, including business planning, strategy, building high performance teams, communication in the workplace and organisational psychology.

All assignment work will be applicable to your role and organisation.

Operations/ Departmental Manager Higher Apprenticeship

Level 5 • 36 months

As part of the Leadership & Management Academy, this Apprenticeship is accredited by the Chartered Management Institute (CMI). The areas of study are theoretical and build on the skills, knowledge and behaviours needed to effectively lead and manage in the current business climate.

Areas of study include operational planning and management, leadership and management theories, managing high performance teams, with an emphasis on application to your role and organisation.

Additional entry requirements:

To study a CMI accredited Apprenticeship, you will need:

- To have a minimum of Level 2 or grade C/4 in Maths & English upon completion of the course.

These qualifications are accredited by the Chartered Management Institute (CMI)

Child Education

Whilst studying Child Education at LMC, you'll work with a team of specialist tutors who provide excellent teaching in the knowledge and practical skills needed to work in this challenging, but rewarding, vocational area. The courses include a large proportion of work experience in a variety of placement settings where you'll be able to apply theory to your practice.

Work placements

Many opportunities to experience working with local nurseries and schools

Industry experienced staff

You will be taught by highly qualified industry specialist tutors

Proud to work with:



Work placements

Completing work placements is at the centre of our Child Education curriculum. Students may carry out work placements at nursery settings, pre-school, or primary schools, providing practical experience and knowledge to develop the skills needed to become an excellent practitioner.

Progression opportunities

Following the completion of a Child Education course at LMC, many students choose to progress onto the next Level of study, relevant Apprenticeship, or progress onto university to study Primary Education.

There are many exciting career opportunities in the Child Education industry, including:

- Teaching Assistant
- Early Years Practitioner
- Early Years Educator
- Nanny/Child-minder
- Family Support Worker



Childcare Employer Advisory Group Meeting with industry leaders

The Childcare Education department meet with leading local employers in the sector to help shape the Full Time curriculum, and to ensure that we are meeting industry standards.

Developing skills required to gain employment in the industry

During work placements, students are required to complete a Practical Evidence Portfolio to present to employers, providing evidence of skills development in Early Years practice.

“

LMC taught me that facing challenges can be an effective way of gaining more skills and it has shown me that there's so much you can achieve when you put your mind to it.

”

Lydia Corney,
Children's Play, Learning
and Development Alumni



Full Time Courses - see page 15 for entry requirements

Childcare Pathway

Level 1 • 1 Year

This course has been designed to support students who want to gain basic knowledge of Childcare and who may not have entry requirements for mainstream courses.

Caring for Children Under 5

Level 1 • 1 Year

This course will develop your knowledge of young children and help you to develop a range of skills in the early years sector. It will also help to prepare you for Level 2 study.

Children's Play, Learning & Development

Technical Diploma (Early Years Practitioner)

Level 2 • 1 Year

This course provides you with knowledge and understanding of the play, learning and development of children from birth to seven years of age. Successful completion enables you to work in nurseries, pre-schools and reception classes in primary schools.

Children's Play, Learning & Development

(Early Years Educator)

Level 3 • 2 years

This course is designed for those who are interested in a career working with children in a school or nursery setting. It is a challenging course that is both exciting and rigorous.

The course enables you to develop a substantial range of knowledge in areas including: Child Development, Keeping Children Safe, Working with Parents and Others, and the Early Years Foundation Stage.

You will be required to undertake work placements in a variety of settings with different age groups, to develop the work skills required to gain employment in an early years setting. During the placements, students are required to complete the Practical Evidence Portfolio, which allows you to provide evidence of your development of skills in early years practice.

Additional entry requirements:

To study Level 2 and 3 Children's Play, Learning & Development, you must

- Have a caring and compassionate nature and a passion for working with children
- Be able to communicate confidently
- Demonstrate effective teamwork in a real-work environment
- Complete a satisfactory DBS check.



Child Education Apprenticeships

- see page 15 for entry requirements

Early Years Practitioner Apprenticeship

Level 2 • 15 months

The aim of this Apprenticeship is to provide you with the knowledge and understanding of babies and young children from birth to seven years of age with applied knowledge in the early years (0–5 years).

Additional entry requirements:

- Complete a satisfactory DBS check

Early Years Educator Advanced Apprenticeship

Level 3 • 24 months

An Early Years Educator initiates activities based on individual children's needs, and supports children to develop in various areas of education. This Apprenticeship is a perfect choice if you want to continue your studies and develop your skills, knowledge and behaviours within the childcare sector, making children feel safe and shaping learning behaviours, while also earning a salary in full-time employment; kickstarting your long-term career path.

Additional entry requirements:

- Complete a satisfactory DBS check

Teaching Assistant Apprenticeship

Level 3 • 24 months

This Apprenticeship is a perfect choice if you want to continue your studies and develop your skills, knowledge and behaviours in a teaching role, while also earning a salary in full-time employment. Teaching Assistants work in primary, special and secondary education across all age ranges encompassing special educational needs and emotional vulnerabilities.

You will gain a Paediatric First Aid certificate while studying this Apprenticeship.

Additional entry requirements:

- Complete a satisfactory DBS check
- Relevant industry experience



Construction & Built Environment

We pride ourselves at LMC on being one of the best providers of construction training in the North West. You'll be studying in our industry standard workshops with first class facilities, alongside lecturers with years of experience in the field. You'll be learning from the best in the business.

Modern workshops

State of the art equipment and purpose built workshops

Industry placements

We work with over 150 local and national companies

Proud to work with:



Outside of the classroom

We regularly invite guest speakers along to talk to Construction students, as well as opportunities for all students, such as National Citizen Service (NCS), which offers students a team bonding experience outside of their comfort zones.

Students are matched with employers for a minimum of 45 days over the academic year, to use the skills they have learnt in College and build their confidence in a real-work environment.

Progression opportunities

On completion of a Construction course at LMC, many students choose to progress onto a relevant Apprenticeship, employment, self-employment, and may work nationally or even internationally.

There are many exciting career opportunities in the Construction industry, including:

- Supervisor
- Business Owner
- Heritage Work
- Renewable Energy Technologies
- Contract Management

“

I really enjoy passing on my joinery experience and skills to the students and watching them develop. I recommend students try and achieve the best grades they can, as a qualified Carpenter or Joiner will have the opportunity to work anywhere in the world.

**Derek Bothwick,
Carpentry Tutor**

”



Campus visits from leading employers in the industry

Martin and Adam from JM Horseboxes visited our Construction & Engineering students to discuss what an Apprenticeship at JM would entail.

The students had a tour of the horsebox externally and internally, and learnt what it takes to build a habitable space for both humans and horses, from scratch, up to an Olympic Games standard.

The team at JM were recruiting for five new apprentices in their expanding team, and our lucky students had the opportunity to get to introduce themselves.



Full Time Courses - see page 15 for entry requirements

Construction Multiskills

Level 1 • 1 year

This course is for students who are interested in the construction industry and want to develop skills within a trade, with a view to progressing onto a specific Full Time course in the construction industry, such as Bricklaying, Carpentry & Joinery, Plastering, or Plumbing.

Bricklaying

Level 1 • 1 year

This course is a good introduction to bricklaying for anyone wanting to work in the construction industry. Starting with little or no experience, Brickwork Level 1 will build your practical skills and prepare you with the theory knowledge ready to progress to Level 2.

Bricklaying

Level 2 • 1 year

This course is suitable for school leavers, adults, and those progressing from Level 1, who wish to work in construction with a specific interest in bricklaying. Completion of this course could lead to an Apprenticeship in the industry, further study on a Level 3 related course, and sometimes employment.

Plastering

Level 1 • 1 year

This course is a great way to start your career and develop the basic skills required to progress in the plastering trade, such as applying wet finishes to walls, ceilings and dry lining. This is a great progression route onto the Level 2 Full Time course in Plastering.

Plastering

Level 2 • 1 year

This course is suitable for school leavers, adults, and those progressing from Level 1, who wish to enhance their skills in plastering. You will be based in our industry standard workshops where you'll develop the necessary skills to become a plasterer, including both practical and theory work. Completion of this course could lead to an Apprenticeship in the industry, further study on a Level 3 related course, and sometimes employment.



Carpentry & Joinery

Level 1 • 1 year

This course is for students who wish to develop basic carpentry and joinery skills with a view to progression within the construction industry. You will learn safe working practices, communication, how to prepare and maintain power tools, and basic construction technology.

Carpentry & Joinery

Level 2 • 1 year

This course is suitable for school leavers, adults, and those progressing from Level 1, who wish to enhance their skills in carpentry and joinery. You will learn how to use portable power tools, fixing skirtings, architraves and hinged doors, first and second fixing before plastering, and using circular saws. Completion of this course could lead to progression onto Level 3 Carpentry & Joinery or an Apprenticeship.

Carpentry & Joinery

Level 3 • 1 year

This is a practical based qualification, which includes a minimum of 50 hours work experience. Most lessons will take place in the Joinery Workshop, giving students the opportunity to complete work that will reflect their abilities and that will become more challenging as their skills improve. You will learn how to use portable power tools, fixing skirtings, architraves and hinged doors, first and second fixing before plastering, and using circular saws.

Plumbing & Heating

Level 1 • 1 year

This course is a great way to start your career in the plumbing & heating trade. You will develop basic skills in order to progress into further studies or employment, such as above ground drainage, fundamentals of pipework, safe working practices and more.

Plumbing & Heating

Level 2 • 1 year

This course is suitable for school leavers, adults, and those progressing from Level 1, who wish to progress in the plumbing & heating industry. Students will develop the necessary skills to become a plumber, including both practical and theory work in copper, steel, sanitation, hot water cylinders, plastic pipe work, central heating, safety, and communication.

Plumbing & Heating

Level 3 • 1 year

This course teaches both theoretical and practical aspects of plumbing & heating and is suitable for school leavers and adults wishing to become involved in the industry or associated disciplines. At the end of the course, you will have a good understanding of all aspects of plumbing & heating; ideal for someone who wishes to progress onto full time employment or a Level 3 Apprenticeship.

Additional entry requirements for all courses:

To study a Level 2/3 course in Construction, you will need

- Relevant industry experience OR a Level 1/2 qualification in a related subject

Full Time Courses – see page 15 for entry requirements

Electrical Installation

Level 1 • 1 year

This course gives students a good introduction to both theoretical and practical aspects of electrical installation and can lead to an Electrical Apprenticeship or progression onto the Full Time Level 2 Electrical Installation course.

Electrical Installation

Level 2 • 1 year

Electricians have exciting opportunities of work varying from domestic settings to industrial environments and so you are required to actively solve problems on this course; ideal for someone who wants to pursue a hands-on career.

Additional entry requirements:

- GCSE Maths at grade 4/C or higher

Electrical Installation

Level 3 • 1 year

This course teaches both theoretical and practical aspects of electrical installation and is suitable for school leavers and adults wishing to become involved in the electrical industry and associated disciplines.

Additional entry requirements:

- Relevant industry experience or a Level 2 in Electrical Installation

These qualifications are facilitated by JTL.

“During my time at LMC, I have won 3 separate awards for being the “Apprentice of the Year”; one from LMC, one from the Association for Public Service Excellence (APSE) and also one from Lancaster City Council.”

**Fiona Finnigan,
Carpentry Alumni**





Construction Apprenticeships

- see page 15 for entry requirements

Bricklaying Apprenticeship

Level 2 • 30-34 months

The perfect choice if you want to continue your studies and develop your skills, knowledge and behaviours in Bricklaying, while also earning a salary in full-time employment; kickstarting your long-term career path.

Property Maintenance Operative Apprenticeship

Level 2 • 12 months

This Apprenticeship will provide you with all the skills you require to start a career within the Property Maintenance industry. As a Property Maintenance Operative, you will need to maintain a high level of quality customer service and satisfaction. By the end of your Apprenticeship, you will understand the mechanism of buildings including electrical, plumbing, plant, fire and security systems equipment.

Plastering Apprenticeship

Level 2 • 24-36 months

This Apprenticeship provides the skills and underpinning knowledge for plasterers and includes a test at the end of the Apprenticeship, which includes both a knowledge and practical skills test.

Carpentry & Joinery Apprenticeship

Level 2 • 24-28 months

This Apprenticeship gives you the scope to develop a broader understanding of how companies operate and how work is prepared within the Joinery field. Practical assignments set in real-life workplace scenarios will help you learn, build skills, and develop behaviours which you'll use in your future career.

Carpentry & Joinery Apprenticeship

Level 3 • 12-16 months

This Apprenticeship gives you the scope to develop a broader skill set in carpentry and joinery, and can give you the platform to progress into management, university courses and even becoming the owner of your own business. The tasks in this course are bespoke and will enable you to fine tune your practical ability and theory knowledge in the trade.

Plumbing & Domestic Heating Technician Apprenticeship

Level 3 • 48 months

You will receive regular monitoring and assessment, both in the workplace and at College, to ensure you're developing the required skills, knowledge, and behaviours to succeed in the plumbing and heating trade. On this Apprenticeship, you will learn the fundamentals in gas, water and central heating appliances, which can lead you to full time employment, self-employment or further studies in ACS gas, or oil pathways.

Gas Engineer Apprenticeship

Level 2 • 12 months

This Apprenticeship will provide you with the skills required to further your career in the gas industry. You will learn advanced health and safety, science and the principles required to work in the construction and engineering environment. You will be taught in industry standard workshops, ensuring you gain confidence and proficiency, whilst developing your skills and gas knowledge.

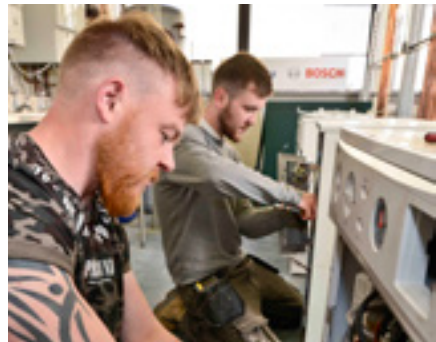
Installation Electrical/ Maintenance Electrician Apprenticeship

Level 3 • 42-46 months

During this Apprenticeship, you will enhance your skills within the electrical contracting industry by completing 18 training exercises and a number of practical assessments, both on site and in the classroom.

At the end of the Apprenticeship, you will be eligible for grading as an electrician, providing you have passed all the course requirements.

This Apprenticeship is facilitated in partnership with JTL.



Creative Digital Media & Sound

Creative Digital Media offers huge and varied career opportunities including animation, web-design, games production and 3-D visualisation. At LMC, we offer courses from Level 1 up to Level 5 HND, and you'll work in an industry standard digital environment with a range of software and hardware to produce creative solutions to media assignments.

Industry experienced staff

You will be taught by highly qualified industry specialist tutors

Exciting virtual trips

Students attend Industrial Light and Magic (ILM) and Framestore webinars

Proud to work with:

digital
ad>antage

awardwinning
digital
production

MoreMusic

BRITISH
ESPORTS
ASSOCIATION

Past projects

The College has links with Digital Advantage, an industry-based media company that works with real employers from the sector. This allows our students to take part in an industry-led programme to accelerate their technical, creative and business skills. During the pandemic, students partnered with digital-careers charity 4wardFutures on a national project "Gaming to Development" (G2D), and attended the virtual Pocket Gamer Connects Digital #8 event.

Past students have also had sessions with industry specialists ranging from creative writing workshops with Jacqueline Wilson to design lectures with games design specialists.

Industry links

We are fortunate to have a number of very strong links to the industry and local media firms including:

- University of Central Lancashire
- Lancaster Police
- Morecambe Bay Food Bank
- Eden Project North

“

I feel really accomplished with the work I've completed and the effort I've put in this year, which has given me a much more positive attitude towards myself.

**Jack McIlwraith,
Esports Level 3 and
iMedia Level 2 Alumni**

”

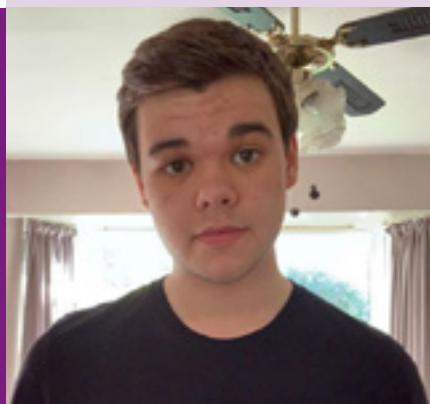


Creative partnership with students and 4wardFutures to deliver a national project

Esports and Creative Digital Media students worked in partnership with digital-careers charity 4wardFutures on a national project "Gaming to Development" (G2D).

Partnered with Epic Games and the University of Cambridge, they are examining how 3D real-time collaboration experiences can be used in education to prepare them for careers which, in many cases, may not yet exist.

The students created their own settlement on Mars with the above considerations in mind using Unreal Engine through negotiation, collaboration and planning.



Full Time Courses - see page 15 for entry requirements

I-Media

Level 2 • 1 Year

This course is designed to challenge your abilities across the full media scope including graphic design, photography, animation, music, film, video production, games design and professional editing skills.

Esports

Level 3 • 2 years

This future-forward course, developed in partnership with the British Esports Association, is designed to help you turn a passion for gaming into successful and skilled careers in the rapidly growing industry.

As part of the main programme, you will be responsible for creating your own brand, designing a logo and launching your own channel. You will also be expected to develop a real life esports event from initial creation, through to managing and hosting the event.

Additional entry requirements:

To study a Creative Digital Media & Sound course, you will need:

- To create a short piece of work for interview
- Enthusiasm for the subject with a commitment to study, and show good skills in practical subjects.

Creative Digital Media

Level 3 • 2 years

Creative Digital Media has a strong emphasis on giving you a broad range of skills across a number of disciplines in digital media, games development, sound design and film and television. Each brief on this course gives you a broad introduction, with opportunity to develop skills in specific technical areas.

Creative Digital Media HNC

Level 4 • 1 Year

This HNC course will develop your practical project management skills in preparation for a career in the creative media industry, or, progression to further study. You will use professional standard equipment and software to produce a range of media projects, such as promotional videos, documentaries, web content, computer games and other media-rich applications in a challenging and productive environment.

Creative Digital Media HND

Level 5 • 1 year

The Creative Media Production HND further develops students' practical project management skills in preparation for a career in the creative media industry. Participants will use professional standard equipment and software to produce a substantial portfolio of media projects with emphasis on student conceptualisation, design and execution from the ground up through to completion.

Music Performance & Production

Level 2 • 1 year

Learn the fundamentals of Music Performance & Production as well as developing a broader contextual understanding of the industry. Assignments are produced via consultation with local employers and professionals to ensure students are completing the course with relevant knowledge and skills to succeed in the industry.

Music Performance & Production

Level 3 • 1-2 years

This course teaches the skills, knowledge and necessary understanding to progress to further study and training in a range of Music Performance & Production disciplines. Summative assessment is designed to ensure students deliver a collaborative project at the end of the course, and can plan, prepare and deliver an extended music project at the end of the Extended Diploma.

Additional entry requirements:

To study a Music Performance & Production course, you will need:

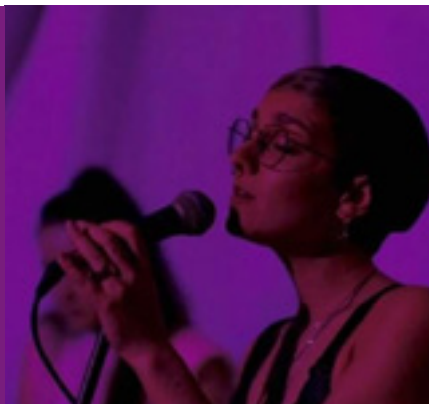
- A proven interest in music performance and/or music production.

“

Lancaster & Morecambe College provided a hands-on experience to learn in a practical environment. It gave me the confidence required to move to London, record my own EP in a studio and perform live.

Katy Pickles (PILLARS)
Music Alumni
PILLARS music artist

”



Digital Technology

Digital Technology is in every part of every day. You can't do much without the application of digital technology and the demand for skilled IT graduates is growing. On a Digital Technology Apprenticeship, you'll develop skills that are transferable into existing and emerging job roles.

Industry experienced staff

You will be taught by highly qualified industry specialist tutors

Apprenticeship opportunities

Apprentices gain associate membership of BCS (Chartered Institute of IT)



Industry links

In addition to your work based training, we offer a Skills Development Academy to give apprentices the opportunity to gain further knowledge and confidence in their field of study. This gives you the opportunity to meet other apprentices, socialise on campus and gain additional industry insight from guest speakers.

Our Digital Technology Apprenticeships are recognised for entry on to the Register of IT Technicians and those completing their Apprenticeships are eligible to apply for registration. Completion of our Apprenticeships would also allow access to Associate membership of BCS (Chartered Institute of IT).

Progression opportunities

There are many exciting roles to progress onto within Digital Technology, including:

- IT Specialist
- Digital Coach
- Database Administrator
- IT Operations Technician
- Digital Applications Specialist



Banks Lyon Memorial Trust provides generous grant to support digital learning at LMC

Students and apprentices at Lancaster & Morecambe College (LMC) are the amongst the latest local beneficiaries of the Banks Lyons Memorial Trust (BLMT), which has provided LMC with a generous grant to support students across the district to access relevant education and training.

The grants BLMT award help to remove potential barriers to learning, ensuring young people are given opportunity to thrive and gain key employability skills.

“

In 2020, our Apprenticeship provision ranked in the Top 20 FE Colleges and was rated Good by Ofsted. Earn while you learn in your chosen industry.

Just think where an Apprenticeship with LMC could take you.

”



Full Time Courses - see page 15 for entry requirements

Digital Technology Pathway

Level 1 • 1 year

All Pathway courses at LMC provide you with a positive foundation into Full Time study within the College.

This Digital Technology Pathway is designed for students who have an interest in developing skills and knowledge related to computing, IT and digital technology.



Digital Technology Apprenticeships

- see page 15 for entry requirements

Digital Support Technician Apprenticeship

Level 3 • 36 months

A Digital Support Technician is someone who helps their organisation's internal users to maximise the use of digital technologies and adapt to changes in technology to meet organisation objectives and maximise productivity. They ensure effective use of digital office technologies, productivity software, digital communications and digital information systems. This course aims to provide the apprentice with the knowledge and skills to be a Digital Support Technician, whilst the employer will provide the hands-on experience.

IT Software Solutions Technician Apprenticeship

Level 3 • 36 months

An IT Solutions Technician applies a professional framework to design, develop, test, and implement IT solutions and to provide ongoing support both directly to end users and for the underlying IT services. Tasks undertaken vary depending on what needs to be achieved by the team at any particular time. Some tasks may be very technical, others may be more analytical, business or user focused. This course aims to provide the apprentice with the knowledge and skills to be an IT Software Solutions Technician, whilst the employer will provide the hands-on experience.



Eden Land-Based & Animal Studies

Eden Land-Based & Animal Studies courses at LMC work collaboratively with Eden Project, Cornwall to offer a unique learning experience, which will cover the core subjects in animal care and management whilst specialising in wildlife, ecology and conservation. You'll work with over 150 small animals, as well as gaining work experience within the Land-based sector.

Industry links

We have strong links with local organisations such as Leighton Hall Estate

Educational visits

Students visit organisations across the North West to gain experience in the sector

Proud to work with:



LEIGHTON
HALL



greenlands
farm village



Educational visits

Many of our courses involve educational visits to organisations such as:

- Leighton Hall Estate
- Lakeland Wildlife Oasis
- AJ Exotics and Pet Supplies
- Greenlands Farm Village
- Bay Veterinary Group

Progression opportunities

Following the completion of a Land-based course at LMC, many students choose to progress onto a higher level course, or a Higher Education course within College, or, alternatively choose to go to university.

There are many exciting employment opportunities in the Land-based industry, including:

- Zoo keeping
- Pet shop management
- Conservation work
- Dog grooming
- Veterinary nursing



Cat Robertshaw
Animal Management
Level 3

Cat spent nearly twenty years working in theatre before realising that she was drawn to the outdoors, not the backstage area. After coming to this realisation, Cat decided to do something for her and make a career change.

The Eden Land-Based & Animal Studies programme at LMC stood out to Cat due to it covering the core fundamentals in animal care and management, whilst specialising in wildlife, ecology and conservation.

"I knew that I wanted to learn more about animals and conservation and this sounded like the ideal course for me."

“

I teach a subject that I am passionate about and transfer my knowledge and skills to our students. The team is amazing, every day is a different, unique challenge, and the job is never boring!

”

Carrie Vale,
Eden Land-Based and
Animal Studies tutor



Full Time Courses - see page 15 for entry requirements

Animal Studies Pathway

Level 1 • 1 year

All Pathway courses at LMC provide you with a positive foundation into Full Time study within the College.

This course is designed for anyone wishing to pursue a career in working with animals, and includes theory-based lessons where you'll learn how to care for animals, alongside practical workshop sessions.

Land-Based Studies

Level 1 • 1 year

This course is an introduction to the Land-based industries with a particular focus on animal care and welfare. It provides an opportunity to investigate job opportunities and to acquire appropriate workplace skills.

Animal Care

Level 2 • 1 year

This course aims to provide students with an introduction to Animal Care, which could lead to employment at a junior level, or to the Level 3 Animal Management course. It will also help students to develop personal and administrative skills needed in this area of work.

Animal Management

Level 3 • 1-2 years

This course will provide you with the base knowledge required for a range of careers in the Animal Management industry with a specific focus on wildlife, ecology and conservation. It will provide specialist studies relevant within the industry and help you develop a range of skills and techniques, essential for successful performance in working life.

Animal Management HNC

Level 4 • 1 year

This course focuses on educating and training for a range of careers in the animal management and allied land-based industries. The qualification prepares you for employment in the animal management sector and will allow you to expand your knowledge, understanding and skills and help you develop a range of techniques and attributes essential for successful performance in working life.

Additional entry requirements:

To study an Eden Land-based & Animal Studies course, you must:

- Have a proven interest in animal care and a willingness to work with a range of different species
- Be prepared to work outdoors in all weathers



Engineering

Engineering is a national priority with jobs in the sector ready for people with the skills. As an aspiring engineer, our courses and training will enable you to stand out from the crowd when applying for your next course, an Apprenticeship, university or job.

Industry experienced staff

You will be taught by highly qualified industry specialist tutors

Modern Workshops

State of the art equipment and purpose built workshops

Proud to work with:



Outside of the classroom

We invite industry guest speakers along to chat to students on all Engineering courses, alongside an opportunity to take part in events across the College. All Full Time students can get involved in programmes such as National Citizen Service (NCS), which offers students a team bonding experience outside of their comfort zones

Progression opportunities

Following the completion of an Engineering course at LMC, many students choose to progress onto a higher level course, relevant Apprenticeship, or a Higher Education course within College, or, alternatively choose to go to university.

There is a variety of exciting roles within the Engineering industry, such as:

- Automotive Engineer
- Boiler Engineer or Boilermaker
- Equipment Engineer
- Motor Vehicle Fitter
- Steel Fitter

“

Come and join us at LMC!
You'll gain new skills, use industry standard equipment, be taught by a dedicated team of specialists who are passionate about educating you to a higher skills level, so that you can gain an Apprenticeship or go into full time employment.

Chris Huntington,
Fabrication & Welding
Tutor

”



Industry Work Placements supporting local employers in the community

Students are matched with employers for a minimum of 45 days over the academic year, to use the skills they have learnt in College and build their confidence in a real-work environment.

Ava was studying Level 3 Engineering when she attended an Industry Work Placement at John Turner Construction, developing a new library building at Lancaster University.

"It's good to see the youth of today coming through, showing great awareness and a keenness to learn in Engineering."

John Hegarty at John Turner



Full Time Courses - see page 15 for entry requirements

Engineering

Level 2 • 1 year

This course covers the knowledge required for a career in the engineering and power industries. It is aimed at preparing you to enter the sector by grounding you in working safely and effectively, plus interpreting and using engineering information together with an introduction to computer aided design (CAD).

Additional entry requirements

- Relevant industry experience OR a Level 1 qualification in a related subject

Engineering

Level 3 • 1 year

This course offers a 50/50 split between the theoretical and practical application of knowledge required to enter the engineering industry. Covering both electrical and mechanical aspects of the sector, the Engineering Level 3 course provides students with a grounded introduction to maintenance procedures, health and safety, fault finding and repair techniques used in today's industry-led fields.

Additional entry requirements:

- GCSE English and Maths at grade 4/C or higher

Engineering TechBac

Level 3 • 1 year

The Technical Baccalaureate in Engineering is an ideal alternative to A Level study for those who are interested in Engineering as a career. On completion of the course, you could choose to apply for university or an Apprenticeship in the field, as you'll have a good basis of knowledge in Engineering. On this course, you have the opportunity to study A Level Maths.

Additional entry requirements:

- GCSE English & Maths at grade 5/B or higher
- 2-3 Science GCSEs at grade 4/C or higher
- A total of 6 GCSEs at grade 4/C or higher
- Some grade GCSEs at grade 5 or higher will indicate the suitability to study the Technical Baccalaureate.
- To study A Level Maths, a GCSE Maths at grade 6/B or other equivalent Maths qualification is needed.

Engineering with Nuclear Behaviours HNC

Level 4 • 1 year

The Extended Certificate in Engineering (Nuclear)f delivered at LMC in collaboration with the NCfN holds the potential to open doors to many fantastic and exciting opportunities. There is a wide variety of exciting roles within the sector such as Radiation Protection Technician, Project Control Engineer and Aerospace Engineer.

Additional entry requirements:

- A recognised Level 3 extended certificate, extended diploma or A Levels.
- To study A Level Maths, students are recommended to have a grade 6/B or higher in GCSE Maths.

Fabrication & Welding

Level 1 • 1 year

Fabrication & Welding Level 1 is designed to give you the basic engineering skills and knowledge to prepare you for a career in the fabrication industry. You will develop safe working practices and competency in fabrication and welding in order to progress into further studies or employment.

Fabrication & Welding

Level 2 • 1 year

Fabrication & Welding Level 2 is designed to give you a more focused introduction to the engineering skills and knowledge required to prepare you for a career in the fabrication and welding industry. You'll learn about producing fabrication components and assemblies, joining materials using MMA and MIG processes, and related engineering knowledge.

Additional entry requirements

- Relevant industry experience OR a Level 1 qualification in a related subject



Vehicle Fitting Operations

Level 2 • 1 year

Vehicle Fitting Operations Level 2 is designed to cover the theoretical and practical aspect of garage operations, including light vehicle tyres, exhaust systems, batteries and brakes. The course is both classroom and workshop based with practical and on-line assessments. You will also gain a broad knowledge of health and safety in the workplace along with other skills associated with working in a garage.

This qualification is facilitated by Lancaster Training Services (LTS).



Engineering Apprenticeships

- see page 15 for entry requirements

Engineering Operative Apprenticeship

Level 2 • 24 months

Engineering Operatives are predominantly involved in engineering operations which are key to the success of the Manufacturing and Engineering sector, allowing employers to grow their business while developing a work force with the relevant skills and knowledge to enhance and sustain the sector.

Fire Emergency & Security Systems Technician Apprenticeship

Level 3 • 24-36 months

Fire, Emergency & Security Systems Technicians design, install, commission and maintain electronic systems in and outside simple and complex premises to protect individuals, homes and properties from risk and danger.

The systems you'll design will detect intrusion, provide surveillance, monitor and control access to buildings, properties and sites or to detect fire and emergencies.

Engineering Technician (Mechatronic) Apprenticeship

Level 3 • 42 months

Mechatronics Maintenance Technicians ensure that plant and equipment perform to the required standard to facilitate production targets regarding safety, quality, delivery and cost within high value manufacturing environments. Typically, the work would cover a broad range of activities, which include installation, testing, fault finding and the on-going planned maintenance of complex automated equipment. This requires the application of a complex blend of skills, knowledge and occupational behaviours across the electrical, electronic, mechanical, fluid power and control systems disciplines.



Engineering Apprenticeships

- see page 15 for entry requirements

General Welding Apprenticeship

Level 2 • 24 months

This Apprenticeship will provide you with all the skills required to start a career in the General Welding industry. You will learn the principles of general welding, such as butt, fillet, lap and corner joints in the flat, horizontal and vertical positions, as well as underpinning knowledge you need for working in any engineering environment, including health and safety.

Plate Welding Apprenticeship

Level 3 • 24 months

This Apprenticeship will provide you with the skills required to further your career in the Plate Welding industry. You will learn advanced health and safety as well as fundamental welding principles such as butt, fillet, lap and corner joints in the vertical and overhead positions that will undergo both destructive and non-destructive testing to international standards.

Pipe Welding Apprenticeship

Level 3 • 48 months

This Apprenticeship will provide you with the skills required to further your career in the Pipe Welding industry. You will learn two welding processes such as MIG, TIG or MMA, and four material groups welding in all positions, alongside three main joint configurations and butt and fillet welds.



Foundation Education

Foundation Education aims to provide you with a positive start into Full Time study within the College. Here at LMC, we believe that offering you the right support network and a variety of options will motivate and inspire you to achieve, giving you the confidence to progress onto Traineeships, Apprenticeships, supported employment or further study within the College.

One to one support

You will be supported by qualified tutors

Safer College Community

Many of our students say they feel safe on our College campus

Proud to work with:

COULSONS

**The
Shop**





Additional opportunities for our students

You can take advantage of opportunities to participate in additional activities including:

- National Citizen Service (NCS)
- Residential activities programme
- Fundraising for local charities
- Community based learning projects including painting and murals
- European visits
- Work experience at a wide range of venues and employers

Past students have progressed to:-

- Apprenticeships or employment
- Level 1 or 2 courses at LMC

“

LMC is a great community asset and I think the local district is lucky to have such a modern, flexible and engaging place of education.

**Sarah Worrall,
Hospitality & Catering
Tutor**

”



Full Time Courses

Bridge to Progression

Entry Level • 1 year

This is a Full Time course, which helps “bridge the gap” between school and College. The course is suitable for young people who want to enhance and develop their employability skills and build their confidence.

Hairdressing

Whilst studying Hairdressing at LMC, you have access to our industry standard facility The Salon, alongside a team of highly experienced tutors. With access to real-life experience on live clients, you'll learn how to develop the skills and techniques needed for a career in the industry and gain confidence in your knowledge to develop your individual creative and artistic talent.

Industry experienced staff

You will be taught by highly qualified industry specialist tutors

Real work environment

You will be taught in our industry standard salons

Proud to work with:



Employability skills

You will undertake work placements in a local salon, allowing you to experience the real life working environment and develop your confidence and technical skills.

The Salon on campus is open to the public, ensuring you are learning the key employability skills required to be a hairdresser.

Additionally, on our Hairdressing courses, there are opportunities to access additional training with Wella's Manchester Academy, as well as taking part in internal and external competitions.

Progression opportunities

Following the completion of a Hairdressing course many students choose to progress into employment, self employment, or an Apprenticeship.

There are a variety of exciting roles within the Hairdressing industry:

- Salon Hairdresser
- Media Stylist
- Salon Manager
- Colouring Technician
- Self-employed Hairdresser



Access to industry standard facilities and live clients

The Salon on campus boasts a fully equipped real-work environment, providing a range of hairdressing services to the wider community, including colouring, styling, cutting, perming and barbering, all carried out by Hairdressing students undergoing assessments. So, as a student at Lancaster & Morecambe College, you'll learn in an industry-standard facility, equipping you with the skills, knowledge and confidence to start your career in the Hairdressing sector. Many of our Alumni have gone on to open their own salons using the industry insight learnt during their studies.

“

I was in such a horrible place before hairdressing. I had great tutors that kept pushing me further, and then eventually you realise that the best thing you can do is get your own shop!

Adam Emslie,
Hairdressing Alumni
Owner of Emslie's Salon

”



Full Time Courses - see page 15 for entry requirements

Hair & Beauty Pathway

Level 1 • 1 year

All Pathway courses at LMC provide you with a positive foundation into Full Time study within the College.

This course has been designed to support students who want to gain a basic knowledge in Hair & Beauty and who may not have the mainstream entry requirements for other courses.

Hair & Beauty Introduction

Level 1 • 1 year

This course offers an introduction to the exciting and prosperous careers available in Hairdressing & Beauty Therapy. You will gain knowledge and new skills in a variety of basic Hairdressing & Beauty Therapy services.

Hairdressing

Level 2 • 1 year

Hairdressing Level 2 is a course which focuses on the development of the underlying principles and practical skills required in the hairdressing industry. During this course, you will gain a variety of skills such as shampooing, conditioning, colouring, dressing, and styling hair. You will also learn basic cutting and perming techniques.

Hairdressing

Level 3 • 1 year

This advanced Hairdressing course is ideal for those wishing to further develop their skills and knowledge in this vocation. The course is a mix of both theory and practical sessions looking at advanced cutting, styling, and colouring techniques. Students will be expected to build a portfolio of evidence and practical assessments throughout the year, to show their practical competence in the application of hair services. Students' theoretical knowledge is tested via online tests or assignment work.

Additional entry requirements:

- Level 2 qualification in Hairdressing



Hairdressing Apprenticeships

- see page 15 for entry requirements

Hair Professional Apprenticeship

Level 2 • 24 months

The Hair Professional Level 2 Apprenticeship is a course that focuses on the development of the underlying principles and practical skills required in the Hairdressing industry. During your Apprenticeship, you will gain a variety of skills such as shampooing, conditioning, colouring, dressing, and styling hair. You will also learn cutting and perming techniques.

This is the perfect course for anyone who is hoping to enter the Hairdressing industry and would like to achieve this through a route where you can earn while you learn.



Health & Social Care

Our Health & Social Care courses give you access to exciting programmes of study taught by qualified tutors with industry experience. You'll undertake extensive work experience in a variety of settings, where you can apply what you've learnt in the classroom to practical experiences. The Health & Social Care sector is one of the largest employers in the local area, so there will always be work waiting for newly qualified individuals.

Industry links

You will have access to local hospitals and care homes to work alongside professionals

Fantastic job opportunities

The Health & Social Care sector is one of the largest employers in the local area

Proud to work with:



Outside of the classroom

Our Health & Social Care courses involve additional activities including guest speaker visits, external trips, projects, and events.

These activities provide our students with a good understanding of the Health & Social Care industry, the local community, and the career options available to them.

Progression opportunities

Some of our students choose to progress onto Higher Education, completing degrees in Nursing, Criminology, Psychology, Midwifery and Social Work, while others progress onto full time employment or Apprenticeships.

There is a variety of exciting roles within Health & Social Care:

- Counsellor
- Social Worker
- Health Visitor
- Occupational Therapist
- Carer
- Nursing (Mental Health, Paediatric, Adult, Learning Disabilities)

“

Think where you want to be in “x” many years and then you can tailor your Apprenticeship to not only support your current role, but also to prepare you for later challenges and opportunities in your career. It’s a fantastic opportunity, go for it

Daniel Thackray
Lead Adult Care Worker

”



Chloe Emslie
Health & Social Care
Level 3

Chloe chose to study at LMC because she was looking to gain experience with service users and employers in the sector; an opportunity that LMC offers to all Full Time students. Chloe describes the focus on industry placements as a key factor in her decision-making process when comparing College to sixth form.

Alongside studying her course, Chloe resat her GCSE English Language exam and actually achieved a much higher grade than she expected:

“I had been working towards a grade 4 for the last three years, the fact I achieved a grade 6 feels amazing.”



Full Time Courses - see page 15 for entry requirements

Health & Social Care Pathway

Level 1 • 1 year

All Pathway courses at LMC provide you with a positive foundation into Full Time study within the College.

This course has been designed to support students who want to gain a basic knowledge of Health & Social Care and who may not have the mainstream entry requirements for other courses.

Health & Social Care

Level 2 • 1 year

This is an interesting and challenging Full Time course, which is designed for students wishing to gain employment in the Health & Social Care sector, or wishing to progress on to Health & Social Care Level 3. The course is a mixture of academic study and vocational experience.

This course enables you to gain a breadth of knowledge and experience of the many aspects of Health & Social Care as well as helping students become familiar with the role of the profession.

Health & Social Care

Level 3 • 1-2 years

This course supports students to gain an understanding of the careers available in Health & Social Care. Providing excellent links to vocational practice, the course is taught by staff with industry experience. The core values of Health & Social Care are covered throughout the programme. Examples of subjects include; Human Lifespan Development, Principles of Safe Practice, Anatomy and Physiology, and Work Experience. You will be required to complete a Practical Evidence Portfolio to show technical skills developed on the programme.

Alongside three days in College, you will complete one day per week on placement, and will be assessed through coursework, examinations, and portfolios.

Additional entry requirements:

To study Health & Social Care Level 2 and 3, you must:

- Have a caring and compassionate nature and have a passion for working with people
- Be able to communicate confidently
- Demonstrate effective teamwork in a real-work environment
- Complete a satisfactory DBS check.



Health & Social Care Apprenticeships

- see page 15 for entry requirements

Adult Care Worker Apprenticeship

Level 2 • 18 months

Adult Care Workers are frontline staff who work in care to make a positive difference to someone's life when they are faced with physical, practical, social, emotional or intellectual challenges. As an Adult Care Worker Apprentice you must be passionate about supporting and enabling people to live a more independent and fulfilling life.

Additional entry requirements:

To study this Apprenticeship, you must:

- Complete a satisfactory DBS check
- Have a Level 2 Care certificate

Lead Adult Care Worker Apprenticeship

Level 3 • 18 months

Lead Adult Care Workers are the frontline staff who help adults with care and support needs to achieve their personal goals, and live as independently and safely as possible, enabling them to have control and choice in their lives. In addition, Lead Adult Care Workers have responsibility for providing supervision, frontline leadership, guidance and direction for others, whilst autonomously exercising judgement and accountability, this means leading and supporting others to comply with expected standards and behaviours.

Additional entry requirements:

To study this Apprenticeship, you must:

- Complete of a satisfactory DBS check
- Have a Level 2 Care certificate



Children, Young People and Families Practitioner Higher Apprenticeship

Level 4 • 24 months

As a Children, Young People and Families Practitioner Apprentice you will work with children, young people, families, and carers to achieve positive and sustainable change in their lives. You will become skilled in recognising and assessing the complex needs of children, young people, and families and will agree any specific interventions or referrals. The apprentice's approach will be one of respectful curiosity that challenges and supports children, young people, and families to achieve their potential and stay safe.

This course is also available as a Level 3 Residential Childcare diploma, which can be discussed at interview.

Additional entry requirements:

To study this Apprenticeship, you must:

- Have 5 GCSEs at grade 4/C including English & Maths
- Complete of a satisfactory DBS check
- Be in a suitable job role and have the agreement of your employer to undertake this Apprenticeship

Children, Young People and Families Higher Manager Apprenticeship

Level 5 • 24 months

The Residential Childcare industry is a genuine and rewarding career pathway. With on the job training from your employer and quality teaching and learning from the delivery team at College, apprentices learn and gain professional competencies in the industry, whilst receiving a wage.

This Apprenticeship is suitable for well-motivated adult students who are keen to focus on leading teams who work with children and young people with complex social, emotional, mental and health needs.

This course is also available as a Level 5 Leadership & Management in Residential Childcare diploma, which can be discussed at interview.

Additional entry requirements:

To study this Apprenticeship, you must:

- Have 5 GCSEs at grade 4/C including English & Maths
- Complete of a satisfactory DBS check
- Be in a suitable job role, have the agreement of your employer to undertake this Apprenticeship and be in a suitable managerial role (Deputy Manager and above)



Hospitality & Catering

Studying Hospitality & Catering at LMC will give you access to a team of expert tutors who have professional experience of working at some of the UK's top hotels and restaurants. Through their extensive knowledge, you'll learn how to develop the skills and techniques needed to make it as a chef or hospitality team member in our industry standard Coulson's Restaurant and kitchen facilities.

Sector specific training

Learn about food preparation and cooking, along with food and drink services.

Industry experienced staff

You will be taught by highly qualified industry specialist tutors

Proud to work with:

COULSON'S

**Educate
toPlate**
• prep • cook • serve

POWELL & COY
CHOWDER CO.

Buccellis
OF BOSTON

Real work environment

You'll regularly work in our award-winning Coulson's Restaurant with its contemporary interior, first class service, and mouth-watering menu. Behind the scenes, you'll access the industry standard kitchens where you'll learn the fundamentals of cooking.

Progression opportunities

Following the completion of a Hospitality & Catering course, many students choose to progress onto further study at LMC or into employment, self employment, or an Apprenticeship.

Many apprentices are offered a permanent role within their company once they have completed their qualification.

There is a variety of exciting roles within the Hospitality industry:

- Sous Chef
- Chef De Partie
- Catering Manager
- Baker
- Food Inspector

“

The best thing about our courses is that the teaching team have excellent industry experience with up-to-date equipment and materials. We are also very focused on all of our students achieving and being successful in their chosen careers.

Adrian Law,
Hospitality & Catering Tutor

”



Michael Lambert
Hospitality & Catering
Level 1, 2 and 3

Michael is now a sous chef at Rookery Hall Hotel and Spa in Cheshire, as well as the proud owner of small business; Lammy's.

Since leaving LMC, he's worked in a variety of well-praised kitchens such as The Black Swan in Helmsley and Freemasons at Wiswell.

"My biggest accomplishment since leaving College was being part of the team at the Freemasons at Wiswell, where we achieved the 'AA Restaurant of the Year for England' at the Hospitality Awards, and 'Best Pub Food' at the Great British Pub Awards."



Full Time Courses - see page 15 for entry requirements

Hospitality & Catering Pathway

Level 1 • 1 year

All Pathway courses at LMC provide you with a positive foundation into Full Time study within the College.

This course has been designed to support students who want to gain a basic knowledge of Hospitality & Catering and who may not have the mainstream entry requirements for other courses.

Introduction to Professional Cookery

Level 2 • 1 year

This course is designed to give you a broad range of cookery skills and food services to form an introduction into the Catering industry. The practical classes will include food preparation and food service, with the theory lessons covering the essential knowledge required to complete your assignment work.





Hospitality & Catering Apprenticeships

- see page 15 for entry requirements

Production Chef Apprenticeship

Level 2 • 18 months

This Apprenticeship is for those who are employed or wish to be employed as a Production Chef and would like to gain a qualification as a professional chef. You will work as part of a team in time-bound and often challenging kitchen environments, for example; schools, hospitals, the Armed Forces, care homes and high street casual dining or pub kitchens, and report to the Senior Production Chef or appropriate line manager.

Senior Production Chef Apprenticeship

Level 3 • 18 months

A Senior Production Chef may lead a brigade team or support the Head Chef in larger establishments. They also supervise production chef teams in a variety of kitchen environments, for example; schools, hospitals, the Armed Forces, care homes and high street, casual dining, or pub kitchens. On this Apprenticeship, you'll be responsible for the day-to-day running of kitchen service, across all areas and during all stages of production and supply.

Additional entry requirements:

- Level 2 qualification in a relevant subject area

Commis Chef Apprenticeship

Level 2 • 18 months

As a Commis Chef Apprentice, you will prepare food and carry out basic cooking tasks under the supervision of a more senior chef. Your primary objective will be to learn and understand how to carry out the basic functions in every section of the kitchen. You will have the opportunity, therefore, to experience, consider and value each section with a view to choosing an area where you feel most inspired.

Hospitality Team Member Apprenticeship

Level 2 • 18 months

As a Hospitality Team Member Apprentice, your role will be very varied and you will have to be adaptable and ready to support team members across the business, for example during busy periods. Specialist areas in hospitality include food and beverage service and food production.

Chef de Partie Apprenticeship

Level 3 • 18 months

As a Chef de Partie Apprentice, you will be responsible for running a specific section of the kitchen. You may manage a small team of workers, which you must keep organised so that dishes go out on time and the work area remains clean and orderly. In smaller kitchens, however, a Chef de Partie may work independently as the only person in their section. The Chef de Partie, also known as a station or section chef, reports to the Senior Chef and has a very important role in any kitchen.

Additional entry requirements:

- Level 2 qualification in a relevant subject area

Hospitality Supervisor Apprenticeship

Level 3 • 18 months

As a Hospitality Supervisor Apprentice, you will study a range of core hospitality supervision knowledge, skills and behaviours and provide vital support to the management team and, ultimately, will be capable of independently supervising hospitality services and running shifts.

Additional entry requirements:

- Level 2 qualification in a relevant subject area

“

I learnt so many skills as an apprentice, so many skills that I couldn't have learnt on my own.

Aaron Barnett,
Commis Chef Apprentice

”



Public Services

Public Services at LMC provides a range of experiences that demonstrate the scale and diversity of uniformed services. You'll have the opportunity to engage with a wide range of services and explore the exciting sector. Our courses are delivered by highly qualified, industry specialist tutors with knowledge across all key areas and the supporting infrastructure.

Learn the appropriate skills

Assess and evaluate the skills needed to apply for entry to the Public Services

Industry experienced staff

You will be taught by highly qualified industry specialist tutors

Proud to work with:



Outside of the classroom

You'll be visited by guest speakers; each sharing their own experiences from different services including Armed Police, Police Dogs, Fire and Rescue Service as well as multiple visits from the military services.

You will also take part in various activities to develop the skills and knowledge required in Public Services:

- Team building residential
- Army 'Look at Life' course
- Team building tasks
- Outdoor activities e.g. orienteering, hill walking, and rock climbing

Progression opportunities

Progression opportunities include both direct service entry and progression onto Higher Education, such as degrees in Criminology, Social Justice, Law and Politics.

There is a wide variety of exciting roles within the Public Services, including:

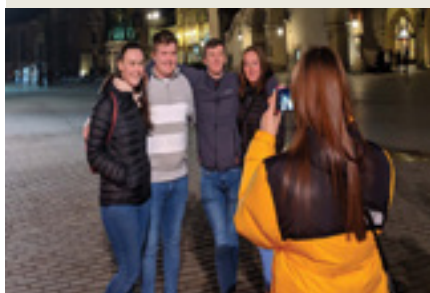
- Soldier
- Royal Navy Officer
- Prison Instructor
- Police Officer
- Firefighter

“

If you want to join the Public Services, you need to study this course! It improves your knowledge on each specific role within the Public Services and gives you the opportunity to meet those in the industry currently.

Ryan Mead
Public Services Alumni

”



Cultural and educational trips to international destinations

Alongside team building trips across the North West, students from Public Services have also travelled to Poland and Bulgaria as part of the fully-funded Erasmus+ programme.

Team building residentials with National Citizen Service (NCS)

Public Services students regularly take part in the NCS Autumn programme, which has included water sports, hiking, and zip-lining activities at venues such as Coniston Water and Go Ape Rivington.



Full Time Courses - see page 15 for entry requirements

Sports & Public Services Pathway

Level 1 • 1 year

All Pathway courses at LMC provide you with a positive foundation into Full Time study within the College.

This course has been designed to support students who want to gain a basic knowledge in Public Services and who may not have the mainstream entry requirements for other courses.

Public Services

Level 2 • 1 year

This course is aimed at students who wish to pursue a career in one of Britain's Uniformed Public Services including the: Army, Royal Navy, Royal Air Force, Police, Prison Service and Fire and Rescue Service.

Uniformed Protected Services

Level 3 • 2 years

This course is aimed at people who are looking to gain entry into the Uniformed Protected Services, or Higher Education courses in the area. Throughout your time on the course, you'll speak to external speakers from different services and develop your understanding of service behaviour and requirements, alongside working towards fitness requirements.

Public Services HNC

Level 4 • 1 year

This course is geared towards a career in the varied and challenging Uniformed Protective and Public Services. You will develop your knowledge of public policies and how they are practically applied in UK Public Services.

Public Services HND

Level 5 • 1 year

This course is usually taken after successful completion of the HNC Level 4 programme and will develop your knowledge even further on public policies and how they are practically applied in UK Public Services.





Sport

On a Sports programme at LMC, you'll have access to a fantastic range of activities and facilities including our high specification all-weather 3G pitch, multi-use games area, the Fitness Suite and Sports Laboratory. Our courses are delivered by highly qualified industry specialist tutors who work across all key areas of professional sport and its supporting infrastructure. We develop professional sports teams onsite, including Morecambe FC.

A wide variety of activities

We also offer the National Citizen Service programme and Duke of Edinburgh Award

Industry experienced staff

You will be trained by a UEFA licenced coach on our Football Studies course

Proud to work with:



Additional opportunities

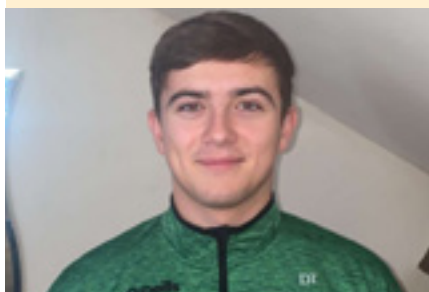
Students take part in a range of activities that develop the skills and knowledge required to progress into the Sports and Leisure industries including:

- FA Level 1 Coaching in Football Certificate
- Opportunities for European visits for coaching and cultural experiences
- National Citizen Service (NCS) programme

Industry links

All courses offer work placement opportunities that will develop the work based skills required for entry into the industry. Placement opportunities that students are supported in gaining include:

- Morecambe FC in the Community
- PE Teacher in secondary school
- Shadowing PE specialists in primary schools
- Leisure Assistant in a leisure centre
- Gym Instructor or Personal Trainer
- Sports Development Officer for governing body or council



Daniel Thornton

**Sport
Level 3**

Daniel originally planned on progressing to sixth form after taking his GCSEs. After hearing about our Sport offering, however, he quickly changed his mind:

"It was a no brainer for me, the course gave me the opportunity to focus directly on a career I wanted, as well as play football every day competing at a very high standard."

Studying Sport allowed Daniel to join the LMC Football Academy, which meant he was able to undergo football training every day and was able to take part in the fully-funded Erasmus+ football trip to Alicante.

“

The knowledge that LMC gave me has really helped me progress onto Level 6 study. By developing an understanding of each topic, you start to discover which area of sport suits you best.

**David Carruthers,
Sport Level 3 Alumni**

”



Full Time Courses - see page 15 for entry requirements

Sports & Public Services Pathway

Level 1 • 1 year

All Pathway courses at LMC provide you with a positive foundation into Full Time study within the College.

This course has been designed to support students who want to gain a basic knowledge in Sport and who may not have the mainstream entry requirements for other courses.

Sports Science

Level 3 • 2 years

If you love sport or exercise science, want a career in Sport, Physiotherapy, Sports Therapy, or would like to study a Sport Science related subject at university, this course is ideal for you. You will learn research methods in sport and exercise science, exercise psychology, coaching for performance and fitness, functional anatomy, and exercise physiology. You will also complete work placement to support your career pathway and personal development.

Additional entry requirements:

To study Sports Level 3 you must:

- Show enthusiasm for Sport Science with a commitment to study and progress within this field

Sport

Level 2 • 1 year

This course is geared towards a career in the fast growing industry of Sport. The course is suitable for school leavers who are seeking employment within the industry and provides a solid basis for progression to further study within this area.

Additional entry requirements:

To study Sport Level 2 you must:

- Demonstrate an appropriate level of fitness to take part in practical aspects of the course

Sport

Level 3 • 2 years

If you love sport or exercise, want a career in Sport and Leisure, or would like to study a sport related subject at university, this course is ideal for you. You will learn about aspects of sports development, fitness, and coaching, whilst completing industry placements and have access to the FA Level 1 Coaching qualification.

Additional entry requirements:

To study Sport Level 3 you must:

- Have evidence of good skills within Sport



Sport HNC

Level 4 • 1 year

This course is geared towards a career in the fast growing Sports industry. You will develop your knowledge of the theory and application of sport and coaching within sporting environments. You will also assess and evaluate your personal and vocational skills which are mapped to the requirements of employers in the Sports industry. During this course, students will also enhance their knowledge of the skills, and behaviours that underpin Sport to prepare them for further study or employment.

Additional entry requirements:

You must show an enthusiasm for Sport with a commitment to study.

Sport HND

Level 5 • 1 year

This course is geared towards a career in the fast growing Sports industry. Aiming to further develop the theory and application of Sports and Sport Coaching in sporting environments, students will complete the course as professional, self-reflecting individuals who are able to meet the demands of employers in the sport sector.

Work experience forms an integral part of the qualification, which gives students the chance to really get to grips with what it means to work in the Sports industry and to find the role to which they are most suited.

Additional entry requirements:

To study Sport HND, you will require:

- Sport Level 3 at MPP and Sport HNC Level 4, or another relevant qualification with a minimum of 64 UCAS points. Plus GCSE Maths & English at grade 4/C or higher.

Football Studies

Level 3 • 1 year

This course is suitable for those who value the importance of academic study and training. In essence, it offers an opportunity for students to gain a recognised qualification whilst working on their football ability, strength and conditioning, as well as their football ambitions. The course offers you the chance to be trained by a UEFA licenced coach, on a Full Time basis, as well as competing at a high level of football.

Additional entry requirements:

To study Football Studies Level 3 you must:

- Demonstrate evidence of good skills in football and have previous playing experience at county/club/weekend league participation



Travel & Tourism

Travel & Tourism at LMC is the starting point to your dream of travelling the world. Students can choose to become Cabin Crew or to specialise in the business side of the Tourism industry. Our tutors will use their years of experience in the industry and in depth knowledge of the travel sector to give you all the tools you need to succeed. Your round the world trip starts here!

Industry expert guest speakers

They share their knowledge and experience to prepare you for work

Exciting trips

We visit an aviation training centre where you will be completing practical training

Proud to work with:



Work placements

Our students take part in work placements, which provide them with the tools to develop their skills and gain real-world experience in the industry.

We have strong links with well-known industry names such as:

- TUI
- Parkdean Resorts
- Jet2holidays
- FlyMe Limited

Progression Opportunities

Following the completion of a Travel & Tourism course at LMC, many students will have the opportunity to work in the industry in a variety of exciting roles such as:

- Airline Customer Service Agent
- Event Coordinator
- Holiday Representative
- Hotel Manager
- Tour Officer
- Cabin Crew Member

Students can also progress onto a related university course, such as BSc (Hons) Tourism Management, available at many universities across the country.

“

I've always wanted to travel, and this was the perfect opportunity to combine my passion with working, whilst seeing the world. I've gained so much confidence and made friends for life on the course.

Emily
Air Cabin Crew Alumni

”



Conor Windsor
Air Cabin Crew
Level 2

LMC alumni, Conor, now works as a Cabin Crew Team Member at Jet2 Holidays after graduating from Air Cabin Crew Level 2.

Following the initial online application, Conor had to also complete a couple of online tests, undergo a telephone interview, and then begin his intensive training before successfully gaining his wings in June 2019.

"The course tutors were incredibly supportive during the application process and it was amazing to have them on my side, especially with Amanda having that cabin crew experience herself."



Full Time Courses - see page 15 for entry requirements

Travel & Tourism

Level 2 • 1 year

This course will open your horizons to the industry and is full of opportunities. Students wishing to gain detailed knowledge, skills and experience in the tourism sector will thrive on this course. You will gain skills that are current, relevant, and topical, to create a sound foundation for either working in the industry or progressing onto the Level 3 Diploma.

Travel & Tourism

Level 3 • 1 year

Level 3 Travel & Tourism is the perfect gateway into the exciting industry. It is a great choice if you are looking for an exciting role, which could take you around the world. You will gain an insight into all relevant sectors of the industry and our expert tutors will teach you the necessary skills to prepare you for life in the profession.

Air Cabin Crew

Level 2 • 1 year

This exciting qualification is designed to assist students in finding their first role working in Cabin Crew. The role of Cabin Crew Team Member is a diverse, social and well-travelled career that is popular among our students. The course is designed for students who want broad-based vocational preparation for employment in a Cabin Crew role, and covers everything from preparing for interview days, practical elements working inside the cabin, and first-hand experience from ex Cabin Crew tutors.

Additional entry requirements:

To study this course you must:

- Be 17 or over

To be an Air Cabin Crew member, you must:

- Be at least 5'2"





Traineeships



Traineeships are designed to combine education and training with work experience, giving young people (16-24) the opportunity to develop key employability skills. They are ideal for anyone who is not sure of their future career path, or who would like to trial different job roles and industries.

Traineeships are also available for 25-year olds with an Education, Health and Care (EHC) plan.

Work placement opportunities

Traineeships boost confidence by incorporating relevant work experience

Sector focused skills

Gain a greater understanding of what employers need and require

Proud to work with:



A Traineeship helps to boost your prospects by offering the skills and experience that employers are looking for and, upon completion, allowing you to progress onto an Apprenticeship or Full Time course. You may even be offered a permanent position with your Traineeship employer.

Throughout the duration of your Traineeship, you are given real work experience whilst developing crucial employability skills to help you in your chosen career path. The programme can last from six weeks up to one year and you are able to trial as many different industries within that time as you wish, with the content tailored to your individual career needs.

Alongside your high-quality work experience placement and essential work preparation training, we will also support you in gaining your Maths and English qualifications, should you need them.

As part of our collaborative work with Eden Project and the development of the Morecambe Bay Curriculum, trainees will have the opportunity to take part in crucial, community-based projects, enhancing their citizenship, entrepreneurial and employment skills and developing their knowledge and understanding of sustainability.

Full Time Courses - see page 15 for entry requirements

Preparation for Work

Level 1 • 6 weeks-1 year

This pathway is ideal for those who are ready to embark on the world of work, but wish to increase confidence and self-esteem around employment. This Traineeship will provide a greater understanding of what employers in each industry are seeking.

Eden Traineeship

Level 1 • 6 weeks-1 year

The Eden Traineeship is a skills development programme including a work placement and two days in College per week, in which you'll develop Eden's three core values: sustainability, citizenship and entrepreneurship.

“

Traineeships are a fantastic opportunity to gain valuable and meaningful work experience and improve your opportunities. I'm passionate about giving young people the confidence and resilience to further their careers.

Catherine Guest
Traineeship Tutor

”



Employer Engagement

Many of our training opportunities for employers are part funded by the European Social Fund, to support local SMEs and the self-employed to increase the skills and capability of their employees, enabling the business to compete regionally, nationally and internationally. Under Leading Lancashire, UpSkilling Lancashire and STELa, local businesses can access free training and support in developing their workforce.

For more information:

lmc.ac.uk/leadinglancashire or

lmc.ac.uk/upskilling or

lmc.ac.uk/stela

lmc.ac.uk/leap

Part funded by the European Social Fund



European Union

European
Social Fund



LEADING LANCASHIRE
LEADERSHIP AND
MANAGEMENT DEVELOPMENT

Follow us @lmcollege



Disclaimer

Lancaster & Morecambe College has published all information about the courses it intends to offer in good faith and warrants that classes will be delivered with reasonable care and skill. The College reserves the right to cancel any class and vary the time, location, direction and content of any class it provides and the associated fees.

Lancaster & Morecambe College hereby expressly excludes liability for any indirect or consequential loss arising from its actions and limits compensation to a maximum of a full refund of any fees paid or the offer of a class of equivalent value.

Data Protection

The College will hold and use the information you have provided on your application or enquiry to inform you about studying at LMC. Your details will be retained until the autumn of your intended year of study or for two years if you are in year 10 at school. Your personal data will not be passed on to any third parties for marketing purposes. You can tell the College that you no longer wish to receive information from us by emailing us at info@lmc.ac.uk or calling us on 0800 306 306. To access the College's privacy notice about the use of students' personal data, please visit the College website: [lmc.ac.uk](https://www.lmc.ac.uk) and go to LMC Privacy Notice.

Open Days

Apprenticeship Open Evening

8 February 2022, 4.30-7pm

Creative Industries Open Evening

8 March 2022, 4.30-7pm

Community Fun Day with Taster Sessions

2 July 2022, 10am-3pm

GCSE Results Open Day

18 August 2022, 10am-2pm

lmc.ac.uk/events



Lancaster &
Morecambe
College

Lancaster & Morecambe College
Morecambe Road, Lancaster LA1 2TY

Part funded by the European Social Fund



European Union
European
Social Fund

