



Lancaster &
Morecambe
College

Full Time Courses
& Apprenticeships

COLLEGE GUIDE

2023/24



Apply online
lmc.ac.uk
or click here

Apply ✓

How to apply

STEP 1 Apply on our website **lmc.ac.uk**
You'll need to create an account first.

STEP 2 Choose your appointment time.

STEP 3 After your interview, you can accept or decline your offer via your account.



If you need any assistance at your interview, contact our Learning Support Team 01524 521571 or see the **Learning Support** section on our website.



Contents

Welcome to LMC	page 4
What's New @LMC	page 6
T Levels	page 8
Sustainable LMC	page 10
Why Choose LMC?	page 12
We're Here to Help	page 13
Student Voice - Have Your Voice Heard	page 14
Free Bus Service	page 15
Financial Support	page 16
Careers Advice & Guidance (CEIAG)	page 17
Facilities	page 18
Information for Parents & Guardians	page 19
International Work Placements	page 20
One Year Offer	page 22
Industrial Placements	page 23
14-16 & Home Educated Provision	page 24
Entry Requirements	page 26
Maths & English	page 28
Apprenticeships & Traineeships	page 30
Our Courses...	page 33



Learners say that they have
fallen in love with learning again
and their programmes help them to
achieve their full potential.

Ofsted Inspection Report, March 2020



For more information:
[lmc.ac.uk/about/governance/
ofsted-report-2020](https://lmc.ac.uk/about/governance/ofsted-report-2020)

Welcome to LMC

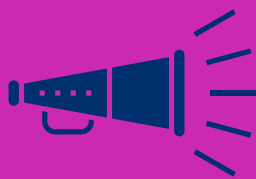
I warmly welcome you to **Lancaster & Morecambe College's, 2023 Course Guide**. As Principal of the College I hope that our exciting range of courses will encourage you to take that next step toward a fantastic, fulfilling career.

We want you to feel empowered in making the best choice for you, therefore, we have a dedicated team of staff to help guide you in making the right decision and ensure understanding of the industries you plan to join.

Working in partnership with local employers, we want you to acquire the knowledge, skills and behaviours to thrive in your chosen industry. Our friendly campus is easy to navigate and includes state-of-the-art equipment and exciting new technologies to equip you to make positive progress.

I look forward to seeing you at one of our **Open Days** and, hopefully, to welcoming you to College as a student or apprentice in the future.

Wes Johnson, Principal



What's New @LMC?



Supported Internship

Our supported internship has been developed in partnership with **DFN Project SEARCH** and **University Hospitals of Morecambe Bay NHS Foundation Trust**, and is aimed at young adults with an Education, Health & Care Plan (EHCP) who aspire to paid employment. Based at the **Royal Lancaster Infirmary**, this innovative programme offers interns the opportunity to gain real work experience in a range of roles, allowing them to develop employability skills, supporting their transition from education into meaningful employment. For more details see pages 86-87 and 109.

Hospital Teaching Ward

The clinical skills room has been **developed to replicate a hospital ward**, and is fully equipped with nursing patient care simulators, a CPR training manikin that measures, monitors and analyses the performance of trainees, and equipment for cardiovascular monitoring, patient observations, and safe moving of patients. The room will allow all healthcare students to prepare for placements and employment and develop practical skills relating to the healthcare sector.



Lancaster &
Morecambe
College



Immersive
experience
@LMC

Coming soon to LMC...

Keep an eye on our website for updates on a range of new courses and initiatives including:

Virtual Reality (VR) Suite

Opening in November 2022, our immersive Virtual Reality (VR) suite will add an exciting new dimension to our courses, with wrap-a-round sound and vision creating realistic education and training scenarios.

Winter Gardens Young Creatives

We are partnering with the iconic **Winter Gardens in Morecambe**, to offer an exciting new programme for learners who wish to develop their skills and progress within the Creative Industries.

A Levels

We hope to launch a **new range of A level subjects** to supplement our vocational and technical qualifications, giving learners the opportunity to study an academic subject alongside their chosen course.

Forensic Science Level 3

This course will cover areas such as **applied science, forensic science, criminology and criminal and forensic psychology**. It is suited to anyone interested in pursuing a career in criminology, policing, forensic science, forensic psychology or criminal investigation.



T-LEVELS @LMC

T-Levels are new two-year qualifications which offer a **blend of classroom based learning and real work experience**, giving you a head start into the world of work. They have been designed to give students the opportunity to develop the skills, technical knowledge and behaviours that employers look for and are **equivalent to three A Levels**; upon completion you can progress within your chosen career, onto a higher level Apprenticeship or into Higher Education.

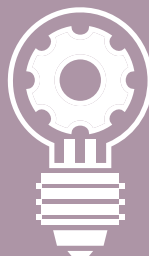
The qualifications have been developed in conjunction with leading employers and education providers, and include significant work experience (315 hours on industrial placement) alongside a structured curriculum giving you in-depth knowledge of your chosen subject and sector.

This year we are offering T-Levels in **Business Management, Education & Childcare and Health** (see pages 48, 56 and 90 for further details.)

Why choose T Levels?

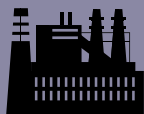
80/20

80% of your time in the classroom and **20%** on a relevant industry placement, gaining real work experience



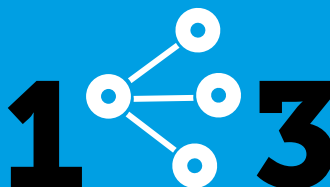
Employer Endorsed

Designed with employers to provide the skills that industry needs



Industry inspired

Play a key part in shaping the future of the economy



T Level = A Levels

The image shows the exterior of a modern building with a dark blue facade. The building has large glass windows on the left side. In the foreground, there is a planter box filled with green plants and several tall, white, star-shaped flowers. The sky is clear and blue.

The Hexagon

Student & Learning Centre



Sustainable LMC

In 2022, LMC successfully secured funding to create a **Sustainable Energy Hub and Renewable Energy Demonstration Centre** on campus, as part of our continued commitment to promoting sustainable careers across the region.

As part of a Lancashire-wide bid, we were granted funding through the Strategic Development Fund (SDF) to develop our **Sustainable Energy Centre**. Featuring a state-of-the-art, fully-immersive Virtual Reality suite, two new CAD workshops and a robotics room. The Centre will open in November 2022 and will provide our students with enhanced learning opportunities.

In July we were pleased to learn we had been awarded funding by the world-renowned, renewable energy company Orsted, to develop a demonstration centre in the Hub promoting awareness of green technologies and STEM-related activities, which will be accessible to local primary & secondary schools.

For more information: lmc.ac.uk/sustainability



Why Choose LMC?



We're a **GOOD** College



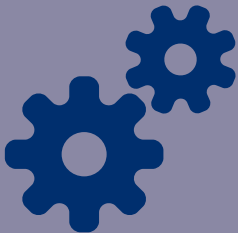
We have qualified, experienced tutors



Free or discounted return bus service



Free breakfast on arrival at College



Industry links to over 700 local employers



International opportunities

We're Here To Help



We know that starting College can feel like a huge step but we are here to help you settle in and find your feet. Our friendly staff will offer you advice and support; from the moment you first apply for a course, right through to your final day at LMC.

Based within **The Hex Student & Learning Centre**, the Student Engagement team can help with **financial support, course information, careers guidance, UCAS applications, CVs and resources** – you don't need an appointment, just pop in for a chat at anytime.

Learning Support

Our experienced Learning Support team will work with you to agree where and how reasonable adjustments can be made to help you succeed in your studies.

Safeguarding

Our **Pastoral Mentors** work closely with the curriculum teams to ensure all of our learners are able to access advice across a wide range of health, welfare and safeguarding issues.

Equality, Diversity & Inclusion

This is embedded across everything we do, to ensure that all members of the College community have an equal opportunity to maximise their potential, are equally valued and treated with respect.

For more information: **lmc.ac.uk/support**

Student VOICE

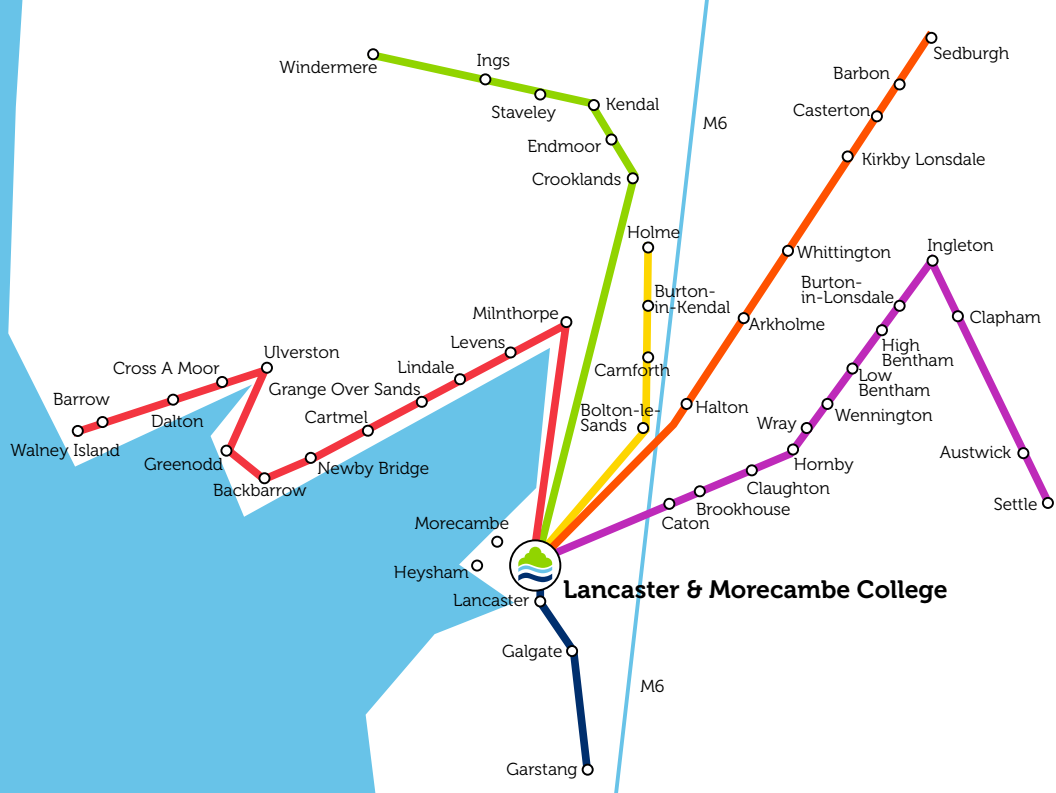
Have Your Voice Heard

A student-focused community with like-minded people from other subject areas, supporting the College at events, discovering new opportunities and making a change within the College Community.

Join the Student Voice throughout your studies to make the most of your time with us at College, and beyond.

For more information: lmc.ac.uk/studentvoice





Free Bus Service

We know that many people who would like to study with us live some distance away from Lancaster & Morecambe College; that's why we offer **Full Time students daily return transport** during term time.

Even if you don't live on a College bus route, you may still qualify for **free or discounted travel** to LMC.

For more information: lmc.ac.uk/bus



Financial Support

We want to ensure all learners are aware of our **Student Money team** who are here to help identify and access any financial support you may be entitled to whilst you are studying at College. They can advise you on all financial matters including; the **Learner Support Fund (LSF)** and **16-18 Vulnerable Bursary** and may also be able to help you with travel expenses, course costs such as uniform, educational visits and equipment, childcare fees and lunches. Just call into The Hex to speak with them or email **studentmoney@lmc.ac.uk**

- Learner Support Fund
- 16-18 Vulnerable Bursary
- Childcare
- Travel Costs
- Breakfasts & Lunches
- Advanced Learner Loans



Visit: **lmc.ac.uk/support**



Careers Advice & Guidance

CEIAG

Our **Engagement Team** is here to provide all of our learners and apprentices with **information and advice** on courses and **entry requirements and course and exam fees**; from your first visit to campus for an Open Day, right through to you completing your course and graduating from the College, we will support you to find the right information for your individual needs and future plans.

Our **Careers Programme** has been designed to meet the need of all of our learners, through a range of structured tutorials, sector-specific events and targeted workshops and sessions. Our tutors are all experts within their industry and embed their knowledge and experience into the courses they teach.

The College CEIAG has a range of well-embedded student support services in relation to learning and employability for all students through the tutorial programme, which is designed to build relationships with students and provide ongoing support, as and when required.

*MATRIX (Quality Standard
for IAG Services), 2020*



Facilities

As we continuously develop the Campus to meet our sustainable goals, all of our facilities are at the centre of improvements. We are fortunate to have an **open green campus** with many outdoor areas and sports pitches, which you can explore on all of our **Open Days** throughout the year.



Employer Hub

The Employer Hub is situated in the heart of Lancaster & Morecambe, offering a range of **conference facilities and resources** available to hire out as bespoke packages, alongside **training opportunities** funded by the European Social Fund (ESF).



The Salon

Our fantastic, modern salon space offers **hair and beauty treatments** of all kinds and is open to the public and students at great prices. The Salon is an oasis of tranquility helping you unwind away from the bustling campus.



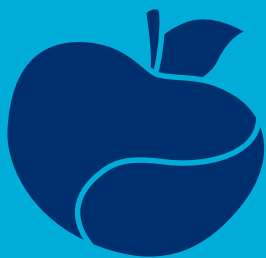
The Lounge

The Lounge is your social space to meet with friends, relax and enjoy excellent, varied, affordable hot and cold food options or snacks in our on-site shop. If you arrive between 8:30am and 9:15am, you can choose **porridge, tea and toast for FREE** to start your day in the best way possible.



The Hexagon Student & Learning Centre

At the heart of our College campus, **The Hex is a quiet space for independent study** and is home to our helpful Student & Learning Services team. Access laptops, PC's and all other College resources as well as student support, careers guidance and student money advice all in one safe space.



Information for Parents & Guardians

We're focused on preparing our students for real careers, independence, and positive progression in the future, with a set of skills and experience that sets them apart from the competition.

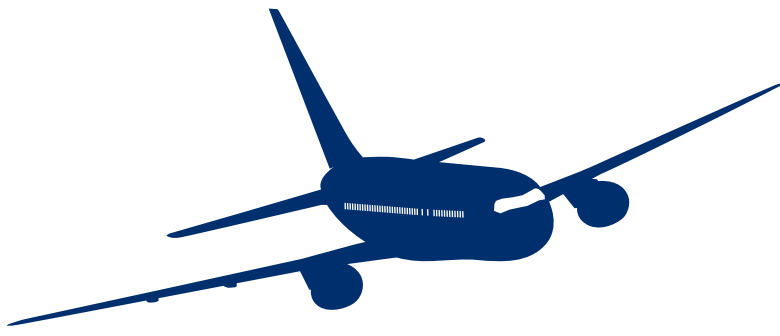
94% of LMC students progress onto university, employment, or further study upon completion of their course, and we're proud to have strong links with local Higher Education providers and employers across the region.

Learners and apprentices work well together with their employers, peers and their tutors. Consequently, they effectively develop skills such as confidence, resilience, patience, communication and independence. Learners develop an understanding of living in a diverse community and appreciate and understand each other's differences.

An Ofsted rated '**GOOD**' College, 2020

For more information: lmc.ac.uk/parents-guardians





International Work Placements

From zoo-keeping in Poland, to welding in Denmark and football coaching in Spain, hundreds of our learners have benefitted from taking part in **fully-funded, international placements** over the last 25 years, giving them the chance to work within their chosen sector, whilst developing their knowledge and understanding of different cultures.

In 2022, the Government's new **Turing Scheme** awarded funding to the College for learners from **Sport, Public Services, Construction & Engineering, Catering & Hospitality, Business, Travel & Tourism and Child Education** to work and study in Iceland, Slovakia, Bulgaria and Italy. As well as offering learners the chance to experience working in a different country, the scheme aims to improve social mobility and boost employability skills and confidence for those learners who take part.

We are now planning the next phase of placements, where we hope to send learners much further afield, so keep an eye on our website for more exciting destinations and opportunities.

For more information: [**lmc.ac.uk/international**](https://lmc.ac.uk/international)



One Year Offer

If you are currently in **Year 13 and studying Level 3 or A-Level qualifications**, but you are unsure of what your next steps should be, this will give you the opportunity to study an **additional Level 3 course for one year**, fully-funded, across a range of subjects.

With a huge number of courses available, you can explore a whole new subject area or continue on your chosen path to gain valuable skills and experience. In this year, you can also gain an extra 32-84 UCAS points to support you in your future after College.

To be eligible, you must have completed your Level 3 course or A-Level qualification and be under 19 years old on 31 August 2023.

For more information: [**lmc.ac.uk/courses/one-year-offer**](https://lmc.ac.uk/courses/one-year-offer)



Industrial Placements

Industry Work Placements are an innovative way to enable you to develop the skills and knowledge required to get ahead in your career. Students on Full Time courses are matched with **local employers for a minimum of 45 days**, over the duration of their studies, to build their confidence, and develop their knowledge in the industry.



14-16



& Home-Educated Provision

In specialist cases, we are able to offer learning opportunities and individualised programmes of study to pupils aged 14-16, including young people who are home-educated.

14-16 School Referrals can be made throughout the academic year and must come from the pupil's current school, educational establishment or social services or the local authority, who must agree to fund the placement. LMC cannot accept private funding. Options include: Childcare, Animal Studies, Digital Technology and each pathway will have Maths and English embedded within the curriculum.

Young people who are currently **home-educated** may be eligible to attend LMC on a part-time basis, to study a vocational specialism and enhance their home learning. Our usual entry criteria will apply and will be used to assess the learner's suitability, including an assessment on whether we feel the young person can thrive in the College environment.

All enquiries should be made direct to Carole Clare, our 14-16 Coordinator.

For more information: **lmc.ac.uk/courses/full-time/foundation-education/14-16-programme**

Entry Requirements

Most courses we offer have certain entry requirements you will need to meet before studying with us. All courses require **an interest in the subject and a willingness to learn**, but some may have additional requirements such as a portfolio of work; exact entry requirements will be detailed on the specific course page. Although you may meet our entry requirements, course offers are decided after your interview with the subject tutor.

If you're a school leaver and haven't received your GCSE grades yet, we'll base our course offer on your predicted grades. If you don't meet the entry requirements, you'll either start on a lower level course or our advice team will assist you with finding the right course.





Level 5

HND

From 64 UCAS points dependent on course PLUS grade C/4 or higher in both GCSE Maths & English, or Advanced Apprenticeship, or equivalent experience.

Level 4

HNC

From 64 UCAS points dependent on course PLUS grade C/4 or higher in both GCSE Maths & English, or Advanced Apprenticeship, or equivalent experience.

Level 3

A Level, T Level

5 GCSEs at grade C/4 or higher including English and Maths
OR a Level 2 related qualification PLUS grade C/4 or higher in both Maths & English

Level 2

GCSE

4 GCSEs at grade D/3 or higher including English or Maths
OR a Level 1 related qualification PLUS grade D/3 or higher in English or Maths

Level 1

GCSE

3 GCSEs at grade G/1 or higher plus grade F/2 or higher in English or Maths

Entry Levels 1, 2 and 3

All Pathway courses, plus Introduction to Hair & Beauty

No formal qualification

Maths & English

No matter which course you take at LMC, our aim is to help you progress into your chosen career and the majority of employers now look for a minimum GCSE grade 4/C or Functional Skills L2 in Maths & English.

It is a UK Government requirement for all students aged 16-18 to study Maths & English alongside their vocational course, if they haven't already achieved GCSE grade 4 or Functional Skills Level 2.

At LMC, we offer two levels in each subject; **GCSE** and **Functional Skills**.



Maths

Progress Maths classes teach learners to the standard required to achieve up to a GCSE grade 3. Learners may take a Functional Skills qualification or the GCSE exams in May/June, depending on their preference and abilities.

GCSE 4/5 Maths teach learners to the standard required to achieve a GCSE grade 4 or 5 on the Foundation Paper. All learners will sit the GCSE exams in May/June. Learners with a GCSE grade 3 will be placed in these classes.



English

Functional Skills English classes teach learners to the standard required to achieve up to a Functional Skills Level 2. Functional Skills English qualifications are very different to English Language GCSE exams, as they focus more on English skills for the workplace.

GCSE English classes teach learners to the standard required to achieve a GCSE grade 4 or 5, and the exam papers allow all grades up to Grade 9 to be achieved. All learners will sit the GCSE exams in May/June. Learners with a GCSE grade 3 will be placed in these classes.

For more information: lmc.ac.uk/english-maths



Maths & English comparison table

FUNCTIONAL SKILLS LEVEL	4-9 GCSE GRADES	A-C GCSE GRADES
	5	C/B
	4	C
Level 2		
Level 1	3	D
	2	E
	1	F/G
Entry Level 3		
Entry Level 2		
Entry Level 1		

Ready for the world of work?

If you feel ready to progress into the world of work, then an Apprenticeship is the perfect choice for you.

Apprenticeships are REAL jobs with real employers, allowing you to develop the relevant skills, knowledge and behaviours, whilst earning a salary and gaining a qualification in your chosen sector.

Did you know?

93% of apprentices remain employed upon completion of their course

(source: Amazing Apprenticeships)

We offer apprenticeships across a wide range of industries; including

Accountancy • Engineering • Property Maintenance
Digital Marketing • Early Years • Catering & Hospitality
Beauty Therapy... and so many more.

“With an Apprenticeship, you are learning all the time. It gives you fantastic experience in the working world and the hands-on training gives you a real chance to put your skills into practice. An Apprenticeship really helps you to gain confidence in a working environment.”

Traineeships

These are a great option if you are ready to gain practical, work-based experience but are not yet sure of your future career path – they give you the opportunity to trial different job roles and industries, whilst developing key employability skills. Alongside your work placement, you will work towards gaining Maths & English qualifications.

As part of our collaborative work with **Eden Project** and the development of the **Morecambe Bay Curriculum**, trainees have the opportunity to take part in community-based projects, enhancing their citizenship, entrepreneurial and employment skills and developing their knowledge and understanding of sustainability. Upon completion, you could progress onto an Apprenticeship, a full-time course or into employment.

Supported Internship with the Royal Lancaster Infirmary



In September 2022, we welcomed our first cohort of interns onto our Supported Internship. This innovative course gives young people (18-24) with an Education, Health & Care Plan (EHCP) the opportunity to transition from education into employment, by offering a range of supported work placements at the RLI in Lancaster. Alongside the work experience, learners take part in employability training sessions and develop independence and life skills. See page 109 for details.

We will be holding an
Apprenticeship Employer Event
on **7 February 2023**

where you can meet potential employers and find out more about the vacancies and courses available.

Visit: lmc.ac.uk/apprenticeships



Our Courses...

Access to Higher Education	34
Art & Design	38
Beauty Therapy	42
Business	46
Child Education	52
Creative Digital Media & Sound	58
Digital Technology	62
Eden Land-Based & Animal Studies	64
Energy, Engineering & Construction	68
Foundation Education	80
Hairdressing	82
Health & Care	86
Hospitality & Catering	92
Public Services	96
Sport	100
Travel & Tourism	104
Traineeships	108

Access to Higher Education

The Access Diploma is specifically designed for people aged 19 years and over who want to progress onto university. Perhaps you've taken a break from education due to other commitments but have always wanted to gain a qualification. Whatever your situation, the Access Diploma offers you the opportunity to gain a qualification that could open the doors to university for you.

Proud to work with



Taught by professionals

You will be taught by experts in their own fields



Sustainability

- In the Access department, we utilise electronic submission, marking and feedback of assessed work to reduce paperwork and printing.



Progression opportunities

Access to HE will prepare you to progress onto a Higher Education course, whether that's a HNC, HND, or a course at university.

Past students have gone on to study various degree level courses including:

- Primary Teaching
- Nursing
- Social Work
- Social Sciences

and have progressed to universities such as:

- Lancaster University
- University of Cumbria
- University of Central Lancashire
- Edge Hill University

Funding your course

If you're aged 19-23 and don't have a full Level 3 qualification, you may be able to study the Access Diploma for free. If you do have to pay fees, Advanced Learner Loans are available to fund course fees. If you undertake an Access Diploma and then go on to complete a university degree course, the outstanding balance of the Advanced Learner Loan is written off. Consequently, the course could be free.



Access to HE students' success in Ascentis' Excellence Awards 2021

Two Access to HE students have been awarded first place and runner-up prizes in the national Ascentis Excellence Awards 2021, following their continuous efforts and achievement on the course. In addition, the students were gifted a cheque to help support their ongoing studies.

"The Access course made me feel understood, heard, and cared for. I don't think I've ever felt so settled nor so passionate about what I'm doing and I just feel so excited to see where university will take me. I have loved every minute of it!"

Charlotte Triolaire, Access to HE

“

When I found the Access course at LMC it seemed like fate! I felt ready to get stuck in and excited at the prospect of returning to Higher Education.

”

Charlotte Triolaire,
'Outstanding Academic Achievement' Winner in the Ascentis' Excellence Awards 2021



Full Time Courses

See page 26-27 for entry requirements

Access to HE

Level 3 • 1 year

The adult alternative to A Levels for ambitious adults who aspire to progress to university or improve their career prospects.

Previous students have progressed into various careers, including:

- **Nursing and Health Professions:**
Adult Nurse, Mental Health Nurse, Midwife, Radiographer, Occupational Therapist, Physiotherapist and Paramedic.
- **Teaching:**
Primary School Teacher, Learning Support Worker, Teaching Assistant and Special Needs Education Worker.
- **Social Work:**
Social Worker, Counsellor, Probation Worker, Youth Worker and Welfare Officer.
- **Higher Education:**
Degree options include for example: Biological Science, Business, Psychology, Humanities and Social Sciences.

Additional entry requirements:

A range of evidence may be considered when assessing an individual's potential to study an Access Diploma, for example; their life skills, previous employment, prior achievements and professional qualifications.

The general expectation, however, is that a student will:

- Have good Level 2 skills reflecting ability equal to 5 GCSEs at grade C/4 or above, or any equivalent professional qualification; and
- Completion of the initial assessment to a satisfactory level.

The offer of a place will be determined by the following three factors:

- The student's performance at interview;
- The successful completion of the assessment; and
- The consideration of prior achievements and/or qualifications.

Different universities and courses have different entry requirements. It is the student's responsibility to check that these would be met when applying for an Access to HE Diploma. This could include subject specific GCSE grades and relevant experience.



Art & Design

An Art & Design course at LMC gives you access to fantastic industry standard facilities, surrounded by a team of designers and artists as tutors. Our students work with industry specialists in the local community and produce exciting portfolios of creative work, which demonstrate a wide set of skills. We encourage our students to be really ambitious about their future careers by applying to highly prestigious universities.



Proud to work with

Opens up your career pathway

Our courses offer an exciting career working in the Art & Design industry



Sustainability

- Students work on projects using recycled materials and explore themes linked directly to the environment, climate change and sustainability, and have worked with partners such as Lancaster University, ICT Reverse and Relic Plastics on sustainable projects.



Industry placements

On our creative courses, students undertake live briefs and have the opportunity to complete an industry placement. In previous years, students have worked with Digital Advantage to gain experience of working in a pop-up creative design agency. More recently, our students have been awarded a Culture Co-op Creative Commission, which links young people to themselves, others, and creative practices.

Progression opportunities

Following the completion of an Art & Design course at LMC, many students choose to progress onto a higher level course, relevant Apprenticeship, or a Higher Education course within College, such as the Art & Design Level 4 HNC. Alternatively, many students choose to go to university.

Students may also start work in the Art & Design industry in a variety of exciting roles such as:

- Illustrator
- Fine Artist
- Set Designer
- Fashion Designer
- Photographer



Students showing fantastic ways of looking at Morecambe's landmarks

Students from LMC's Art & Design department worked with award winning environmental artist Steve Messam on the Now You See It project, a visual art project which showcased giant inflatable sculptures made from recycled plastic sheets appearing in various locations in Morecambe. This project was specially commissioned for a cultural and creative education programme run by Lancaster District Cultural Education Partnership (Culture Co-op), Lancaster University, Curious Minds and Lancashire Youth Challenge (LYC).



“

Each year, students from Visual & Creative Studies display their work in their End of Year Show, which is open to the public.

”

Full Time Courses

See page 26-27 for entry requirements

Art & Design

Level 2 • 1 year

An introduction to the world of art and design, the course is developed to support students who would benefit from a more practical approach to learning, providing them with the transferable skills, knowledge and self-confidence required to progress to further education in art and design and/or employment within the creative industries.

Art & Design

Level 3 • 2 years

Suitable for those wishing to pursue a career in the creative industries, this course covers a broad range of specialist areas in art and design including media, techniques, and a variety of practical skills to help them identify their creative strengths and develop a project using critical and contextual awareness.

Art & Design Foundation Diploma

Level 3/4 • 1 year

This is an intensive one year course exploring a spectrum of design specialisms and builds a strong and diverse portfolio. The emphasis of the course is on experimentation and challenging preconceptions and is the perfect bridge to Higher Education.

Additional entry requirements for all courses:

To study an Art & Design course, you will need;

- A portfolio of work
- Enthusiasm for the subject with a commitment to study, and show good skills in practical subjects.

Art Practice HNC

Level 4 • 1 year

Art Practice HNC Level 4 offers students a broad introduction and awareness of the key aspects of the creative industries sector through four core units; Professional Development, Contextual Studies, Individual Project, and Techniques and Processes. This effectively builds underpinning core skills gained in research, self-study, directed study and workplace scenarios.

Art Practice HND

Level 5 • 1 year

Art Practice HND Level 5 allows students to develop a sound understanding of the principles in their 'specialist pathway' of study. Students will learn to evaluate varied approaches to problem solving, effectively performing in their chosen field with the required qualities for employment in the sector.

Additional entry requirements:

- A minimum of 64 UCAS points, PLUS GCSE Maths & English at grade C/4 or higher, and have completed the HNC in Art Practice or similar.

Level 2 ➡

Level 3 ➡

Level 4 ➡

Level 5 ➡



Beauty Therapy

Studying Beauty Therapy at LMC will give you access to our industry standard facility, The Salon, plus a team of highly experienced and specialist tutors. Through their extensive knowledge, you'll learn the skills and techniques needed to establish a career in the Beauty Therapy industry. If you choose to progress through the qualification levels, you'll gain confidence in your skills and knowledge and begin to develop your individual creative talent.

Proud to work with

The
Salon
Specialising in Beauty Therapy



LONDON
BUSINESS
ACADEMY



Real work environment

You will be taught in our industry standard salons



Sustainability

- We have swapped our regular make-up applicators and cotton buds for sustainable bamboo alternatives, which are biodegradable and contain no plastic.



Industry placements

Students on a Beauty Therapy course can take part in industry placements with local employers in the hair and beauty industry; this could include a beauty salon, hair salon, or a make-up counter.

Our students regularly visit local schools to manage the pupils' hair and make-up for dance and drama productions. Working on live clients throughout your studies is a great addition to your CV whilst being a student..

Progression opportunities

Following the completion of a Beauty Therapy course at LMC, many students choose to progress onto employment or self-employment, and may work across the country or internationally. Progression in the workplace can lead to management roles and after experience, your career may lead to teaching and training others.

There are many exciting career opportunities in the Beauty Therapy industry, including:

- Beauty Consultant
- Nail Technician
- Salon Manager
- Massage Therapist

“

Theatrical & Media Make-up Level 3 students were visited by professional make-up brand, Kryolan, for an Avant Garde & Drag focused masterclass. Delivered by experts in the make-up industry, the visit featured sessions on trends, products, techniques, and colours.

”



Students learn emerging techniques in Beauty such as Brow Lamination

Beauty Therapy at LMC has a long-standing relationship with Ellison's Beauty, who offer training in new emerging techniques such as brow lamination and lash lift. This industry training is in addition to the LMC qualification, offering learners the theory and practical knowledge required to deliver professional treatments.



Beauty Guild Courses

As well as progression into the Beauty industry, LMC provides numerous Beauty Guild Accredited Courses for those qualified professionals who are working towards a regulated qualification in Beauty Therapy.



Full Time Courses & Apprenticeships

See page 26-27 for entry requirements

Hair & Beauty Introduction

Level 1 • 1 year

Entry Level 3/Level 1 • 1 year

This course offers an introduction to the exciting and prosperous careers available in Hairdressing & Beauty Therapy. You will gain knowledge and new skills in a variety of basic Hairdressing & Beauty Therapy services. The Entry Level 3 course is designed for students without qualifications, and can be discussed at interview.

Beauty Therapy

Level 2 • 1 year

This course offers the opportunity to learn the skills necessary for employment in the Beauty Therapy profession. You will learn techniques which are in demand and on trend, with insight from employers in the Beauty Therapy industry.

Beauty Therapy Apprenticeship

Level 2 • 1 year

This course includes both theory and practical based delivery and assessments. Completed in College one day per week, and in salon four days per week, you will learn waxing, hand and nail treatments, facial treatments, eyelash and eyebrow treatments, make-up application and basic massage treatment.

Beauty Therapy

Level 3 • 1 year

You will focus on advanced treatments, theory elements of business promotions, relevant health and safety, and advanced treatment techniques in the Beauty industry. You'll spend time gaining experience in LMC's real work environment, The Salon, and develop your customer care and communication skills, preparing you for future employment.

Additional entry requirements:

- Level 2 qualification in Beauty Therapy

Hair & Media Make-Up

Level 2 • 1 year

This course will provide you with an excellent introduction to the Hairdressing & Beauty Therapy industries, including: the art of applying a range of make-up techniques, eye treatments, skin tanning, creative hair design, body art, colouring and dressing hair.

Theatrical & Media Make-up

Level 3 • 1 year

Aimed at individuals who want to work within professional make-up or hair departments of TV, film, or theatre production companies, this course equips you with the knowledge required to progress onto university courses in Beauty Therapy.

Level 1 ➡

Level 2 ➡

Level 3 ➡

Employment



Business

As a Business student at Lancaster & Morecambe College, you'll become a part of the LMC Enterprise & Leadership Academy, with access to local and national business professionals who work with you to enhance your experience of enterprise, and develop your confidence and business acumen.

Proud to work with



Variety of Apprenticeships

We offer an opportunity to earn while you learn with an Apprenticeship

Congratulations!
Apprentice of the Year
Winner

Kate Wood
Thomas Graham



Industry placements

All students gain work experience throughout their course with supportive and inspiring employers, helping to enhance their employability skills and further their knowledge in their chosen area of interest. Many students have utilised their industry placements to gain employment and volunteering opportunities, as well as references for future applications within their career.

Progression opportunities

Following the completion of a Business course at LMC, many students choose to progress onto a higher level course, relevant Apprenticeship, or a Higher Education course at LMC or further afield at university.

There are many exciting career opportunities in the Business industry, including:

- Events Manager
- Digital Marketer
- Accountant
- Social Media Manager
- Business Advisor



Thrilling student experience at Disneyland, Paris

This year a group of students from Business and Travel & Tourism embarked on a trip to Disneyland Paris where they attended The Business of Disney Student Convention 2022 conference. They heard from an array of guest speakers and learnt about the skills needed to become a Disney 'cast member', how the digital marketing team at Disney engage with their audience, how Covid 19 has impacted the industry, and the diversification of the business model.

“

With an Apprenticeship, you are learning all the time. It gives you fantastic experience in the working world and the hands-on training gives you a real chance to put your skills into practice. An Apprenticeship really helps you to gain confidence in a working environment.

”

Holly Salisbury
Business Administration Apprentice



Full Time Courses, T Levels & Apprenticeships

See page 26-27 for entry requirements

Retail Pathway

Level 1 • 1 year

All Pathway courses at LMC provide you with a positive foundation into studying at the College.

This Retail Pathway is designed for students who have an interest in developing skills and knowledge related to business, administration and retail.

Business & Enterprise

Level 3 • 2 years

This course gives you the scope to develop a broader understanding of business organisations and practices, providing subject-specific skills and knowledge about markets, customers, finance, marketing, operations, communication, information technology and business strategy.

Business Administrator Apprenticeship

Level 3 • 18 months

This Apprenticeship focuses on the skills, knowledge and behaviours of the Business Administrator Standards, whilst working independently and as part of a team in an organisation. You will be involved in developing, implementing and improving administrative services.

NEW T Level - Management & Administration

Level 3 • 2 years

This qualification allows you to gain an understanding of what is needed to work within an administrative or managerial role. T Levels are designed to deliver a high-quality level of knowledge about the sector, as well as the occupational skills required to enter the industry. Topics covered include Business Context, People, Quality Compliance, Project and Change Management. There is a 315-hour minimum industrial placement as a mandatory part of this course. The T Level prepares you for the world of work as well as providing significant preparation for study at Higher Education in a range of relevant disciplines.

Level 1 ➡

Level 2 ➡

Level 3 ➡

Apprenticeship ➡

Customer Service Practitioner Apprenticeship

Level 2 • 15 months

This Apprenticeship develops excellent customer service skills and behaviours as well as product and service knowledge when delivering to your customers. You will provide service in line with the organisation's standards and strategy, within appropriate regulatory requirements. Your customer interactions may cover a wide range of situations and can include; face-to-face, telephone, post, email, text and social media.

Customer Service Specialist Apprenticeship

Level 3 • 18 months

A Customer Service Specialist demonstrates professionalism towards customers and supports the organisation to analyse customer data, implement changes to improve services, and is attentive to various digital technologies.

You'll have a great deal of knowledge about the organisation's products and/or services, and act as a point of contact to support customers and colleagues with complex requests, complaints and queries.

Marketing Assistant Apprenticeship

Level 3 • 24 months

This Apprenticeship will focus on the skills, knowledge and behaviours of the Marketing Assistant Standards. You'll be involved in a wide range of planning, delivery and evaluation of marketing activities for the organisation, and will learn marketing theory, concepts and principles.

Digital Marketer Assistant Apprenticeship

Level 3 • 24 months

This Apprenticeship outlines, plans, builds and implements marketing promotions and monitors engagement, through a wide range of media sources, to capture customer purchases, commitment and retention.

This course aims to provide you with the knowledge and skills to be a Digital Marketer, whilst the workplace/ employer will provide the hands-on experience.

Full Time Courses & Apprenticeships

See page 26-27 for entry requirements



Team Leader Apprenticeship

Level 3 • 18 months

As part of the Leadership & Management Academy, this Apprenticeship is accredited by the Chartered Management Institute (CMI). There are various areas of study explored in a challenging, informative, and fun way, including business planning, strategy, building high performance teams, communication in the workplace and organisational psychology.

All assignment work will be applicable to your role and organisation.

Additional entry requirements:

To study a CMI accredited Apprenticeship, you will need:

- A minimum of Level 2 or grade C/4 in Maths & English upon completion of the course.

Operations/ Departmental Manager Higher Apprenticeship

Level 5 • 24 months

As part of the Leadership & Management Academy, this Apprenticeship is accredited by the Chartered Management Institute (CMI). The areas of study are theoretical and build on the skills, knowledge and behaviours needed to effectively lead and manage in the current business climate.

Areas of study include operational planning and management, leadership and management theories, managing high performance teams, with an emphasis on application to your role and organisation.

These qualifications are accredited by the Chartered Management Institute (CMI)

Level 2 ➡

Level 3 ➡

Level 4 ➡

Employment



Accounts Assistant Apprenticeship

Level 2 • 15 months

This Apprenticeship will focus on developing your skills in maintaining an efficient and accurate finance function within a business. The Accounts or Finance Assistant is responsible for assisting the team of accountants with junior accounting duties.

Assistant Accountant Apprenticeship

Level 3 • 18 months

This Apprenticeship provides support within a finance function of an organisation. Part of your role will involve assisting in financial activities, such as data entry to month-end management accounts and year-end financial statements. In addition, you may be involved in regulatory financial requirements such as the completion of VAT returns or assisting in the preparation of tax computations.

Additional entry requirements:

- A Level 2 qualification in Accountancy or relevant industry experience, to be discussed at interview stage.

Professional Accounting & Taxation Technician Higher Apprenticeship

Level 4 • 18 months

This Apprenticeship will cover drafting financial statements, managing budgets and evaluating financial performance, as well as optional specialist units including business tax, personal tax, external auditing and credit management, and cash and treasury management. These are taught sessions on campus, one day a week, which are then assessed via online exams.

Additional entry requirements:

- A Level 3 qualification in Accountancy or relevant industry experience, to be discussed at interview stage.

These qualifications are accredited by the Association of Accounting Technicians (AAT)

Child Education

Whilst studying Child Education at LMC, you'll work with a team of specialist tutors who provide excellent teaching in the knowledge and practical skills needed to work in this challenging, but rewarding, vocational area. The courses include a large proportion of work experience in a variety of placement settings where you'll be able to apply theory to your practice.

Proud to work with



Industry placements

Opportunities to experience working with local nurseries and schools



Sustainability

- As a sector, the move toward recycled sustainable resources that last for years has already begun, including sustainable resources, equipment and practices.



Industry placements

Completing industry placements is at the centre of our Child Education curriculum. Students may carry out industry placements at nursery settings, pre-school, or primary schools, providing practical experience and knowledge to develop the skills needed to become an excellent practitioner.

Progression opportunities

Following the completion of a Child Education course at LMC, many students choose to progress onto the next level of study, relevant Apprenticeship, or progress onto university to study Primary Education or degrees relating to Early Childhood Studies, Psychology, or Child and Family Studies.

There are many exciting career opportunities in the Child Education industry, including:

- Teaching Assistant
- Early Years Practitioner
- Early Years Educator
- Nanny/Child-minder
- Family Support Worker



Developing sustainable skills required to gain employment within industry

Within Early Childhood Education, we believe that a more environmentally sustainable world where people live healthy, enjoyable lives should start from birth. Although our students have essential placement experience with local settings, we also use our Learning Den practical space to introduce them to outstanding, up to date and, importantly, inspirational practice.

During industry placements, students are required to complete a Practical Evidence Portfolio to present to employers, providing evidence of skills development in Early Years practice.

“ It has been good to challenge myself and not just always settle for the easy option. LMC taught me that facing challenges can be an effective way of gaining more skills and it has shown me that there's so much you can achieve when you put your mind to it.

Lydia Corney,
Children's Play, Learning
and Development Alumni



Full Time Courses

See page 26-27 for entry requirements

Caring Professions Pathway

Level 1 • 1 Year

This course has been designed to support students who want to gain basic knowledge of Childcare and who may not have entry requirements for mainstream courses.

Caring for Children Under 5

Level 1 • 1 Year

This course will develop your knowledge of young children and help you to develop a range of skills in the early years sector. It will also help to prepare you for Level 2 study.

Diploma for the Early Years Practitioner

(Early Years Practitioner)

Level 2 • 1 Year

This course provides you with the knowledge and understanding of babies and young children from birth to seven years of age, with applied knowledge in the early years. Upon successful completion of this qualification, you can enter the workforce as a Level 2 Early Years Practitioner, in a variety of roles such as nursery practitioner, classroom assistant or pre-school practitioner, or go onto Level 3 study.

Children's Play, Learning & Development

(Early Years Educator)

Level 3 • 2 years

This course is designed for those who are interested in a career working with children in a school or nursery setting. It is a challenging course that is both exciting and rigorous.

The course enables you to develop a substantial range of knowledge in areas including: Child Development, Keeping Children Safe, Working with Parents and Others, and the Early Years Foundation Stage.

You will be required to undertake industry placements in a variety of settings with different age groups, to develop the work skills required to gain employment in an early years setting. During the placements, you are required to complete the Practical Evidence Portfolio, which allows you to provide evidence of your development of skills in early years (0-5) practice.

Additional entry requirements:

To study the Diploma for the Early Years Practitioner Level 2 or Children's Play, Learning & Development Level 3, you must:

- Have a caring and compassionate nature and have a passion for working with children;
- Be able to communicate confidently;
- Demonstrate effective teamwork in a real-work environment; and
- Complete a satisfactory DBS check.

Level 1 ➡

Level 2 ➡

Level 3 ➡

Employment



T Levels & Apprenticeships

See page 26-27 for entry requirements

NEW T Level Foundation Year - Education & Childcare

Level 2 • 1 year

This transition programme is for students who have the ambition to succeed on a T Level programme but are not quite ready to start. The foundation transition year is designed to give learners effective, tailored preparation specifically to help them progress onto a T Level. You will learn all about the holistic needs of children and young people and attend an industry placement to prepare you for a T Level.

For more information visit
lmc.ac.uk/courses

NEW T Level - Education & Childcare

Level 3 • 2 years

The core element of a T Level in Education & Childcare offers you the opportunity to develop knowledge and understanding of the sector and the holistic needs of children and young people. The Early Years Education specialism builds up the skills needed for future jobs. There is a 750-hour minimum industrial placement as a mandatory part of this course. On the course, you will demonstrate higher-level study skills, as well as the values and behaviours required for occupational roles in Education & Childcare. The T Level prepares you for the world of work, as well as providing significant preparation for study at Higher Education in a range of relevant disciplines.



Early Years Practitioner Apprenticeship

Level 2 • 15 months

The aim of this Apprenticeship is to provide you with the knowledge and understanding of babies and young children from birth to seven years of age with applied knowledge in the early years (0–5 years).

Additional entry requirements:

- Complete a satisfactory DBS check

Early Years Educator Advanced Apprenticeship

Level 3 • 24 months

An Early Years Educator initiates activities based on individual children's needs, and supports children to develop in various areas of education. This Apprenticeship is a perfect choice if you want to continue your studies and develop your skills, knowledge and behaviours within the childcare sector, making children feel safe and shaping learning behaviours, whilst also earning a salary in full-time employment; kickstarting your long-term career path.

Additional entry requirements:

- Complete a satisfactory DBS check; and
- Relevant industry experience

Teaching Assistant Apprenticeship

Level 3 • 24 months

This Apprenticeship is a perfect choice if you want to continue your studies and develop your skills, knowledge and behaviours in a teaching role, whilst also earning a salary in full-time employment. Teaching Assistants work in primary, special and secondary education across all age ranges encompassing special educational needs and emotional vulnerabilities.

You will gain a Paediatric First Aid certificate whilst studying this Apprenticeship.

Additional entry requirements:

- Complete a satisfactory DBS check; and
- Relevant industry experience

Creative Digital Media & Sound

Creative Digital Media offers huge and varied career opportunities including animation, web-design, games production and 3-D visualisation. At LMC, we offer courses from Level 1 up to Level 5 HND, and you'll work in an industry standard digital environment with a range of software and hardware to produce creative solutions to media assignments.

Proud to work with



HYPERX

More Music

digital advantage

Exciting virtual trips

Students attend Industrial Light and Magic (ILM) and Framestore webinars.



Sustainability

- The new Esports team shirts are made from an entirely recycled fabric.





Image taken by Damian Rose (A member of the Theatre Historical Society of America (THS))

Young Creatives Project

We are partnering with the iconic Winter Gardens in Morecambe, to offer an exciting new programme for learners who wish to develop their skills and progress within the Creative Industries.

Industry links

We are fortunate to have a number of very strong links to the industry and local media firms, including:

- University of Central Lancashire
- HyperX
- Lancaster Police
- Morecambe Bay Food Bank
- Eden Project North

“

It is testament to the work completed that really cements a successful Esports programme at LMC. Welcoming HyperX onboard will strengthen our own brand, provision, and facilities to existing and future students, offering recognition and reward for student and staff endeavors.

”

Kevin Clark-Patterson
Lecturer, Creative & Digital Media



Students getting hands on experience with HyperX products

Amongst those representing HyperX are celebrity ambassadors, pro gamers, tech enthusiasts, and students from LMC's Level 3 Esports Team. The sponsorship from HyperX came about after a live-stream broadcast project, where the Esports Team successfully reached out before securing esteemed affiliation.

Progression opportunities

Following the completion of a Creative Digital Media course at LMC, many students choose to progress onto Higher Education courses to study a wide range of subjects from Video, Film & TV, Animation, Games Design, Screen Writing or Digital 3D design/modelling.



Full Time Courses

See page 26-27 for entry requirements

I-Media

Level 2 • 1 Year

This course is designed to challenge your abilities across the full media scope including graphic design, photography, animation, music, film, video production, games design and professional editing skills.

Esports

Level 3 • 2 years

This future-forward course, developed in partnership with the British Esports Association, is designed to help you turn a passion for gaming into successful and skilled careers in the rapidly growing industry.

As part of the main programme, you will be responsible for creating your own brand, designing a logo and launching your own channel. You will also be expected to develop a real life Esports event from initial creation, through to managing and hosting the event.

Additional entry requirements:

To study a Creative Digital Media & Sound course, you will need:

- To create a short piece of work for interview; and
- Enthusiasm for the subject with a commitment to study, and show good skills in practical subjects.

Creative Digital Media

Level 3 • 2 years

Creative Digital Media has a strong emphasis on giving you a broad range of skills across a number of disciplines in digital media, games development, sound design and film and television. Each brief on this course gives you a broad introduction, with opportunity to develop skills in specific technical areas.

Creative Digital Media HNC

Level 4 • 1 Year

This HNC course will develop your practical project management skills in preparation for a career in the creative media industry, or progression to further study. You will use professional standard equipment and software to produce a range of media projects, such as promotional videos, documentaries, web content, computer games and other media-rich applications in a challenging and productive environment.

Creative Digital Media HND

Level 5 • 1 year

The Creative Media Production HND further develops your practical project management skills in preparation for a career in the creative media industry. You will use professional standard equipment and software to produce a substantial portfolio of media projects with emphasis on student conceptualisation, design and execution from the ground up through to completion.

Level 2 ➔

Level 3 ➔

Level 4 ➔

Level 5 ➔

Music Performance & Production

Level 2 • 1 year

Learn the fundamentals of Music Performance & Production, as well as developing a broader contextual understanding of the industry. Assignments are produced via consultation with local employers and professionals to ensure you are completing the course with relevant knowledge and skills to succeed in the industry.

Additional entry requirements:

To study a Music Performance & Production course, you will need:

- A proven interest in music performance and/or music production.

Music Performance & Production

Level 3 • 2 years

This course teaches the skills, knowledge and necessary understanding to progress to further study and training in a range of Music Performance & Production disciplines. Summative assessment is designed to ensure you deliver a collaborative project at the end of the course, and can plan, prepare and deliver an extended music project at the end of the Extended Diploma.



Digital Technology

Digital Technology is in every part of every day. You can't do much without the application of digital technology and the demand for skilled IT graduates is growing. On a Digital Technology Apprenticeship, you'll develop skills that are transferable into existing and emerging job roles.

Apprenticeship opportunities

Apprentices gain associate membership of BCS (Chartered Institute of IT).



Industry links

In addition to your work based training, we offer a Skills Development Academy to give you the opportunity to gain further knowledge and confidence in your field of study. This gives you the opportunity to meet other apprentices, socialise on campus and gain additional industry insight from guest speakers.

Our Digital Technology Apprenticeships are recognised for entry on to the Register of IT Technicians and those completing their Apprenticeships are eligible to apply for registration. Completion of our Apprenticeships would also allow access to Associate membership of BCS (Chartered Institute of IT).

Progression opportunities

There are many exciting roles to progress onto within Digital Technology, including:

- IT Specialist
- Digital Coach
- Database Administrator
- IT Operations Technician
- Digital Applications Specialist

See page 26-27 for entry requirements

Full Time Courses

Digital Technology Pathway

Level 1 • 1 year

All Pathway courses at LMC provide you with a positive foundation into studying at the College.

This Digital Technology Pathway is designed for students who have an interest in developing skills and knowledge related to computing, IT and digital technology.

“

In 2020, our Apprenticeship provision ranked in the Top 20 FE Colleges and was rated Good by Ofsted. Earn while you learn in your chosen industry.

Just think where an Apprenticeship with LMC could take you.

”



Eden Land-Based & Animal Studies

Eden Land-Based & Animal Studies courses at LMC work collaboratively with Eden Project, Cornwall. Courses will cover the core subjects in animal care and management, whilst specialising in wildlife, ecology and conservation. You'll work with over 150 small animals, as well as gaining work experience within the Land-Based sector.

Proud to work with



Educational visits

Students visit organisations across the North West to gain experience in the sector



Sustainability

- We use environmentally friendly animal bedding, recycle all paper, cardboard and plastic and our animal enclosures use LED lighting to reduce energy usage.



Educational visits

Many of our courses involve educational visits to organisations such as:

- Leighton Hall Estate
- Lakeland Wildlife Oasis
- Chester Zoo
- Greenlands Farm Village
- Blackpool Zoo

Progression opportunities

Following the completion of a Land-Based course at LMC, many students choose to progress onto a higher level course, or a Higher Education course within College, or, alternatively choose to go to university.

There are many exciting employment opportunities in the Land-Based industry, including:

- Zoo Keeping
- Pet Shop Management
- Conservation Work
- Dog Grooming
- Veterinary Nursing



LMC: proud to work with forward-thinking businesses and learning projects

Lancaster University and LMC have signed a 25-year Memorandum of Understanding in developing the Morecambe Bay Curriculum, which aims to build responsible and sustainable new green enterprises alongside experts from Eden Project North.

“

Sharron Mitchell recently studied Animal Management at LMC after a career change into something she loves. She was lucky enough to appear on The Farmer's Country Showdown on BBC One as a passionate rearer of the rare pedigree Dutch spotted sheep.

”



Full Time Courses

See page 26-27 for entry requirements

Animal Studies Pathway

Level 1 • 1 year

All Pathway courses at LMC provide you with a positive foundation into studying at the College.

This course is designed for anyone wishing to pursue a career in working with animals, and includes theory-based lessons where you'll learn how to care for animals, alongside practical workshop sessions.

Land-Based Studies

Level 1 • 1 year

This course is an introduction to the Land-Based industries with a particular focus on animal care and welfare. It provides an opportunity to investigate job opportunities and to acquire appropriate workplace skills.

Animal Care

Level 2 • 1 year

This course aims to provide you with an introduction to Animal Care, which could lead to employment at a junior level, or to the Level 3 Animal Management course. It will also help you to develop personal and administrative skills needed in this area of work.

Additional entry requirements:

To study any Eden Land-Based & Animal Studies course, you must:

- Have a proven interest in animal care and a willingness to work with a range of different species; and
- Be prepared to work outdoors in all weathers.

To study an Animal Care Level 2 course, you must:

- Have GCSE Maths or English at grade C/4 or above.

Animal Management

Level 3 • 1-2 years

This course will provide you with the technical knowledge required for a range of careers in the Animal Management industry with a specific focus on wildlife, ecology and conservation. It will provide specialist studies relevant within the industry and help you develop a range of skills and techniques, essential for successful performance in working life.

Animal Management HNC

Level 4 • 1 year

This course focuses on educating and training for a range of careers in the Animal Management and allied Land-Based industries. The qualification prepares you for employment in the Animal Management sector and will allow you to expand your knowledge, understanding and skills and help you develop a range of techniques and attributes essential for successful performance in working life.

Level 1 ➡

Level 2 ➡

Level 3 ➡

Level 4 ➡



Energy, Engineering & Construction

We pride ourselves at LMC on being one of the best providers of Energy, Engineering & Construction training in the North West. You'll be studying in our industry standard workshops with first class facilities, alongside lecturers with years of experience in the field. You'll be learning from the best in the business.

Proud to work with



Industry placements

We work with over 150 local and national companies



Sustainability

- New Electric Vehicle Charger Fitting Centre developed to train fitters to support hitting a target of 30,000 public EV charging points needed by 2030.



Outside the classroom

We invite industry guest speakers along to chat to students on all Energy, Engineering & Construction courses, alongside an opportunity to take part in events across the College. All Full Time students can get involved in programmes such as National Citizen Service (NCS), which offers students a team bonding experience outside of their comfort zones.

Progression opportunities

On completion of an Energy, Engineering & Construction course at LMC, many students choose to progress onto a relevant Apprenticeship, employment, self-employment or and may work nationally or even internationally.

There are many exciting career opportunities in the industry, including:

- Supervisor
- Business Owner
- Heritage Work
- Renewable Energy Technologies
- Contract Management



LMC paving the way for sustainable futures



Member

Working at Heights

Our Working at Heights Centre is approved by both IPAF and PASMA. We offer IPAF MEWP Operator courses and PASMA scaffold towers for users and low-level access courses. We also offer training in Insulation technologies.

Hydrogen & Energy Efficient Boiler Room

A new training space to learn about 'boilers of the future', including hybrid and hydrogen ready appliances.

“ LMC is involved in an exciting project supported by the Government's Strategic Development Fund (SDF), to accelerate the green agenda by addressing skills shortages and supporting businesses to promote low-carbon services and practices. New facilities will include Hydrogen-ready Technology, Retrofitting, Insulation, CAD & Electronics and EV Plant Vehicle Training.”



Full Time Courses & Apprenticeships

See page 26-27 for entry requirements

Construction Skills

Level 1 • 1 year

This course is for students who are interested in the construction industry and want to develop skills within the trades, with a view to progressing onto a specific course in the construction industry, such as Bricklaying, Carpentry & Joinery, Plastering or Plumbing.

General Building

Level 1 • 1 year

This course is a good introduction to bricklaying and general building for anyone wanting to work in the construction industry. Starting with little or no experience, this course will build your practical skills and prepare you with the theory and knowledge ready to progress to Level 2.

General Building

Level 2 • 1 year

This course is suitable for those progressing from Level 1 or have experience, who wish to work in construction with a specific interest in bricklaying. Completion of this course could lead to an Apprenticeship in the industry, further study on a Level 3 related course or employment.

Bricklaying Apprenticeship

Level 2 • 30 months

The perfect choice if you want to continue your studies and develop your skills, knowledge and behaviours in Bricklaying, while also earning a salary in full-time employment, kickstarting your long-term career path.

Plastering

Level 1 • 1 year

This course is a great way to start your career and develop the basic skills required to progress in the plastering trade, such as applying wet finishes to walls, ceilings and dry lining. This is a great progression route onto the Level 2 course in Plastering.

Plastering

Level 2 • 1 year

This course is suitable for those progressing from Level 1 or have experience, who wish to enhance their skills in plastering. You will be based in our industry standard workshops where you'll develop the necessary skills to become a plasterer, including both practical and theory work. Completion of this course could lead to an Apprenticeship in the industry, further study on a Level 3 related course or employment.

Plastering Apprenticeship

Level 2 • 36 months

This Apprenticeship provides the skills and underpinning knowledge for plasterers and includes both a knowledge and practical skills test at the end of the Apprenticeship.

Level 1 ➡

Level 2 ➡

Level 3 ➡

Employment

Property Maintenance Operative Apprenticeship

Level 2 • 12 months

This Apprenticeship will provide you with all the skills you require to start a career within the Property Maintenance industry. As a Property Maintenance Operative, you will need to maintain a high level of quality customer service and satisfaction. By the end of your Apprenticeship, you will understand the mechanism of buildings, including electrical, plumbing, plant, fire and security systems equipment.

Electrical Installation

Level 1 • 1 year

This course gives you a good introduction to both theoretical and practical aspects of electrical installation and can lead to an Electrical Apprenticeship or progression onto the Full Time Level 2 Electrical Installation course.

Electrical Installation

Level 2 • 1 year

Electricians have exciting opportunities of work varying from domestic settings to industrial environments and so you are required to actively solve problems on this course; ideal for someone who wants to pursue a hands-on career.

Additional entry requirements:

- GCSE Maths at grade 4/C or higher.

Electrical Installation

Level 3 • 1 year

This course teaches both theoretical and practical aspects of electrical installation and is suitable for those progressing from the Level 2 course or with experience and wishing to become involved in the electrical industry and associated disciplines.

Additional entry requirements:

- Relevant industry experience or a Level 2 in Electrical Installation.

Installation Electrical/ Maintenance Electrician Apprenticeship

Level 3 • 42-46 months

During this Apprenticeship, you will enhance your skills within the electrical contracting industry by completing 18 training exercises and a number of practical assessments, both on site and in the classroom.

At the end of the Apprenticeship, you will be eligible for grading as an electrician, providing you have passed all the course requirements.

Full Time Courses & Apprenticeships

See page 26-27 for entry requirements

Carpentry & Joinery

Level 1 • 1 year

This course is for students who wish to develop basic carpentry and joinery skills with a view to progression within the construction industry. You will learn safe working practices, communication, how to prepare and maintain power tools, and basic construction technology.

Carpentry & Joinery

Level 2 • 1 year

This course is suitable for school leavers, adults, and those progressing from Level 1, who wish to enhance their skills in carpentry and joinery. You will learn how to use portable power tools, fixing skirtings, architraves and hinged doors, first and second fixing before plastering, and using circular saws. Completion of this course could lead to progression onto Level 3 Carpentry & Joinery or an Apprenticeship.

Carpentry & Joinery

Level 3 • 1 year

This is a practical based qualification, which includes a minimum of 50 hours work experience. Most lessons will take place in the Joinery Workshop, giving you the opportunity to complete work that will reflect your abilities and that will become more challenging as your skills improve. You will learn how to use portable power tools, fixing skirtings, architraves and hinged doors, first and second fixing before plastering, and using circular saws.

Carpentry & Joinery Apprenticeship

Level 2 • 24 months

This Apprenticeship gives you the scope to develop a broader understanding of how companies operate and how work is prepared within the Joinery field. Practical assignments set in real-life workplace scenarios will help you learn, build skills, and develop behaviours which you'll use in your future career.

Carpentry & Joinery Apprenticeship

Level 3 • 15 months

This Apprenticeship gives you the scope to develop a broader skill set in Carpentry & Joinery, and can give you the platform to progress into management, university courses and even becoming the owner of your own business. The tasks in this course are bespoke and will enable you to fine tune your practical ability and theory knowledge in the trade.

Level 1 ➡

Level 2 ➡

Level 3 ➡

Employment



Full Time Courses & Apprenticeships

See page 26-27 for entry requirements

Plumbing & Heating

Level 1 • 1 year

This course is a great way to start your career in the Plumbing & Heating trade. You will develop basic skills in order to progress into further studies or employment, such as above ground drainage, fundamentals of pipework, safe working practices and more.

Plumbing & Heating

Level 2 • 1 year

This course is suitable for school leavers, adults, and those progressing from Level 1, who wish to progress in the Plumbing & Heating industry. You will develop the necessary skills to become a plumber, including both practical and theory work in copper, steel, sanitation, hot water cylinders, plastic pipe work, central heating, safety, and communication.

Plumbing & Heating

Level 3 • 1 year

This course teaches both theoretical and practical aspects of Plumbing & Heating, and is suitable for those progressing from the Level 2 course or with experience and wishing to become involved in the industry or associated disciplines. At the end of the course, you will have a good understanding of all aspects of Plumbing & Heating; ideal for someone who wishes to progress onto full time employment or a Level 3 Apprenticeship.

Plumbing & Domestic Heating Technician Apprenticeship

Level 3 • 48 months

You will receive regular monitoring and assessment, both in the workplace and at College, to ensure you're developing the required skills, knowledge, and behaviours to succeed in the Plumbing & Heating trade. On this Apprenticeship, you will learn the fundamentals in gas, water and central heating appliances, which can lead you to full time employment, self-employment or further studies in ACS gas, or oil pathways.

Gas Engineer Apprenticeship

Level 3 • 18 months

This Apprenticeship will provide you with the skills required to further your career in the gas industry. You will learn advanced health and safety, science and the principles required to work in the construction and engineering environment. You will be taught in industry standard workshops, ensuring you gain confidence and proficiency, whilst developing your skills and gas knowledge.



Level 1 ➡

Level 2 ➡

Level 3 ➡

Employment



Full Time Courses & Apprenticeships

See page 26-27 for entry requirements

Engineering

Level 1 • 1 year

This course is designed to develop the basic engineering skills, knowledge and behaviours that will prepare you for a career in Engineering. You will learn about hand fitting skills, engineering practices and principles, welding and hand and power tools.

Engineering

Level 2 • 1 year

This course covers the knowledge required for a career in engineering and power industries. It is aimed at preparing you to enter the sector by grounding you in working safely and effectively, plus interpreting and using engineering information with an introduction to Computer Aided Design (CAD).

Additional entry requirements

- Relevant industry experience OR a Level 1 qualification in a related subject

Engineering

Level 3 • 1 year

This course offers a 50/50 split between the theoretical and practical application of knowledge required to enter the engineering industry. Covering both electrical and mechanical aspects of the sector, this course provides students with a grounded introduction to maintenance procedures, health and safety, fault finding and repair techniques used in today's industry-led fields. Progression from this course could lead to an Apprenticeship.

Additional entry requirements:

- GCSE Maths & English at grade 4/C or higher.

Engineering TechBac

Level 3 • 1-2 years

The Technical Baccalaureate in Engineering is an ideal alternative to A Level study for those who are interested in Engineering as a career. On completion of the course, you could choose to apply for university or an Apprenticeship in the field, as you'll have a good basis of knowledge in Engineering. On this course, you have the opportunity to study A Level Maths.

Additional entry requirements:

- GCSE Maths & English at grade 5/B or higher
- 2-3 Science GCSEs at grade 4/C or higher
- A total of 6 GCSEs at grade 4/C or higher and some grade GCSEs at grade 5 or higher

To study A Level Maths,

- A GCSE Math at grade 6/B or other equivalent Maths qualification is needed.

Engineering HNC

Level 4 • 1 year

The Extended Certificate in Engineering (Nuclear) delivered at LMC in collaboration with the National College for Nuclear (NCfN) holds the potential to open doors to many fantastic and exciting opportunities. There is a wide variety of exciting roles within the sector, such as Radiation Protection Technician, Project Control Engineer and Aerospace Engineer.

Additional entry requirements:

- A recognised Level 3 extended certificate, extended diploma or A Levels.
- To study A Level Maths, students are recommended to have GCSE Maths at grade 6/B or higher.

Engineering Operative Apprenticeship

Level 2 • 12 months

Engineering Operatives are predominantly involved in engineering operations which are key to the success of the Manufacturing & Engineering sector, allowing employers to grow their business, whilst developing a work force with the relevant skills and knowledge to enhance and sustain the sector.

Engineering Fitter Apprenticeship

Level 3 • 42 months

This course is geared to producing a competent Engineer with the knowledge to carry out a high-level engineering role. The Apprenticeship is suitable for those working as mechanical engineers within the Manufacturing & Engineering sector.

This Apprenticeship consists of two parts; a Diploma in Advanced Manufacturing & Engineering (Competence), which mainly comprises work based learning, and a Diploma in Manufacturing (knowledge), which will largely be delivered by the College.

Fire Emergency & Security Systems Technician Apprenticeship

Level 3 • 36 months

Fire Emergency & Security Systems Technicians design, install, commission and maintain electronic systems in and outside simple and complex premises to protect individuals, homes and properties from risk and danger.

The systems you'll design will detect intrusion, provide surveillance, monitor and control access to buildings, properties and sites or to detect fire and emergencies.

Lift Truck and Powered Access Engineering Technician

Level 3 • 36 months

Lift Truck and Powered Access Engineers can be found in many sectors, wherever businesses need to lift and move products, equipment and people safely. This is vital to a huge range of industries including: engineering, manufacturing and construction, food manufacturing and the storage and logistics industries.

The broad purpose of this course is to service, repair and maintain lift trucks and powered access vehicles.

Level 1 ➡

Level 2 ➡

Level 3 ➡

Employment

Full Time Courses & Apprenticeships

See page 26-27 for entry requirements

Fabrication & Welding

Level 1 • 1 year

Fabrication & Welding Level 1 is designed to give you the basic engineering skills and knowledge to prepare you for a career in the Fabrication industry. You will develop safe working practices and competency in fabrication and welding in order to progress into further studies or employment.

Fabrication & Welding

Level 2 • 1 year

Fabrication & Welding Level 2 is designed to give you a more focused introduction to the engineering skills and knowledge required to prepare you for a career in the Fabrication & Welding industry. You'll learn about producing fabrication components and assemblies, joining materials using MMA and MIG processes, and related engineering knowledge.

Additional entry requirements

- Relevant industry experience OR a Level 1 qualification in a related subject

General Welding Apprenticeship

Level 2 • 18 months

This Apprenticeship will provide you with all the skills required to start a career in the General Welding industry. You will learn the principles of general welding, such as butt, fillet, lap and corner joints in the flat, horizontal and vertical positions, as well as underpinning knowledge you need for working in any engineering environment, including health and safety.

Plate Welding Apprenticeship

Level 3 • 36 months

This Apprenticeship will provide you with the skills required to further your career in the Plate Welding industry. You will learn advanced health and safety as well as fundamental welding principles such as butt, fillet, lap and corner joints in the vertical and overhead positions that will undergo both destructive and non-destructive testing to international standards.

Level 1 ➡

Level 2 ➡

Level 3 ➡

Employment



Vehicle Fitting Operations

Level 2 • 1 year

Vehicle Fitting Operations Level 2 is designed to cover the theoretical and practical aspect of garage operations, including light vehicle tyres, exhaust systems, batteries and brakes. The course is both classroom and workshop based with practical and on-line assessments. You will also gain a broad knowledge of health and safety in the workplace, along with other skills associated with working in a garage.

This qualification is facilitated by Lancaster Training Services (LTS).



Foundation Education

Foundation Education aims to provide you with a positive start into Full Time study within the College. Here at LMC, we believe that offering you the right support network and a variety of options will motivate and inspire you to achieve, giving you the confidence to progress onto Traineeships, Apprenticeships, supported employment or further study within the College.

Proud to work with



Garden

We have a beehive on site to pollinate the flowers and produce honey to use in our restaurant





LMC pan-ability football team plays in AoC National Finals

Students from LMC joined pan-ability football teams from colleges across the country, as they competed to become national champions in the Association of Colleges Pan-Ability Finals.

"We all really enjoyed the weekend, trying new sports and spending time with our teammates. It was a once in a life time experience that we will never forget."

“

Sport & Public Services Pathway learners from LMC completed their Duke of Edinburgh Bronze Expedition with a weekend of hiking & camping in Coniston. These students also spent 169 hours volunteering in 2022, which has a social value of over £780.

”

See page 26-27 for entry requirements

Full Time Courses

Bridge to Progression

Entry Level • 1 year

This full time course helps "bridge the gap" between school and College, and is suitable for young people who want to develop their employability skills and build confidence.

Step Up

Entry Level • 1 year

This full time course is designed for 19 + learners who require additional support within their learning journey. The course gives opportunities to sample a range of vocational areas whilst improving Maths & English skills.

Pathway Routes

Entry Level • 1 year

These courses provide you with a positive foundation into studying at College.

- Retail Pathway
- Caring Professions Pathway
- Animal Studies Pathway
- Hospitality & Catering Pathway
- Sports & Public Services Pathway
- Digital Technology Pathway



Hairdressing

Whilst studying Hairdressing at LMC, you have access to our industry standard facility The Salon, alongside a team of highly experienced tutors. With access to real-life experience on live clients, you'll learn how to develop the skills and techniques needed for a career in the industry and gain confidence in your knowledge to develop your individual creative and artistic talent.

Proud to work with



The
Salon

Hairdressing & Beauty Therapy



Real work environment

You will be taught in our industry standard salons.



Sustainability

- ECOHEADSTM at all wash basins using 65% less water than a regular shower head and reducing water usage by 390L per chair, per day.



Employability skills

You will undertake industry placements in a local salon, allowing you to experience the real life working environment and develop your confidence and technical skills.

The Salon on campus is open to the public, ensuring you are learning the key employability skills required to be a hairdresser.

Additionally, on our Hairdressing courses, there are opportunities to access additional training with Wella's Manchester Academy, as well as taking part in internal and external competitions.

Progression opportunities

Following the completion of a Hairdressing course, many students choose to progress into employment, self employment, or an Apprenticeship.

There are a variety of exciting roles within the Hairdressing industry:

- Salon Hairdresser
- Media Stylist
- Salon Manager
- Colouring Technician
- Self-employed Hairdresser



Specialist industry training from external experts

Every year, Hairdressing students at LMC are joined by industry experts from Balmain to learn how to apply Balmain hair extensions on different hair types.

This industry training is in addition to the LMC qualification, offering learners the theory and practical knowledge required to deliver professional treatments.

“

The College has always been a great place for learning resources, I've always enjoyed going into College even though I wasn't ever academically inclined. Whenever I've needed to gain any qualifications in my life, LMC has always ticked all the boxes.

Russell Walsh
Owner of Directors Cutz

”



Full Time Courses & Apprenticeships

See page 26-27 for entry requirements

Hair & Beauty Introduction

Entry Level 3/Level 1 • 1 year

This course offers an introduction to the exciting and prosperous careers available in Hairdressing & Beauty Therapy. You will gain knowledge and new skills in a variety of basic Hairdressing & Beauty Therapy services. The Entry Level 3 course is designed for students without qualifications, and can be discussed at interview.

Hairdressing

Level 2 • 1 year

Hairdressing Level 2 is a course which focuses on the development of the underlying principles and practical skills required in the hairdressing industry. During this course, you will gain a variety of skills such as shampooing, conditioning, colouring, cutting, and styling hair. You will gain experience of working with both women's and men's hairdressing techniques.

Hairdressing

Level 3 • 1 year

This advanced Hairdressing course is ideal for those wishing to further develop their skills and knowledge in this vocation. The course is a mix of both theory and practical sessions looking at advanced cutting, styling, and colouring techniques. You will be expected to build a portfolio of evidence and practical assessments throughout the year, to show your practical competence in the application of hair services.

Additional entry requirements:

- Level 2 qualification in Hairdressing

Hair Professional Apprenticeship

Level 2 • 24 months

The Hair Professional Level 2 Apprenticeship is a course that focuses on the development of the underlying principles and practical skills required in the Hairdressing industry. During your Apprenticeship, you will gain a variety of skills such as shampooing, conditioning, colouring, dressing, and styling hair. You will also learn cutting and perming techniques.

This is the perfect course for anyone who is hoping to enter the Hairdressing industry and would like to achieve this through a route where you can earn while you learn.

Advanced & Creative Hair Professional Apprenticeship

Level 3 • 12-15 months

The Level 3 Apprenticeship is ideal for those who wish to progress from Level 2 and are creative, passionate and driven stylists. This qualification is aimed at stylists who work without supervision and are able to manage themselves and others, as required. This course includes, using fashion forward trends in hair, creative and precision techniques to create a collection of hairstyle looks, precision and personalised cutting techniques, smoothing and strengthening services and advanced creative colour conversion.

Level 1 ➡

Level 2 ➡

Level 3 ➡

Employment



Health & Care

Our Health & Care courses give you access to exciting programmes of study taught by qualified tutors with industry experience. You'll undertake extensive work experience in a variety of settings, where you can apply what you've learnt in the classroom to practical experiences. The Health & Care sector is one of the largest employers in the local area, so there will always be work waiting for newly qualified individuals.

Proud to work with



Industry links

You will have access to local hospitals and care homes to work alongside professionals



Sustainability

- We aim to educate students on providing safe and reliable care through skills development. We support them to be independent and innovative thinkers, instilling resilience and sustainability into the future healthcare workforce.



Outside of the classroom

Our Health & Care courses involve additional activities including guest speaker visits, external trips, projects, and events.

These activities provide our students with a good understanding of the Health & Care industry, the local community, and the career options available to them.

Progression opportunities

Some of our students choose to progress onto Higher Education, completing degrees in Nursing, Criminology, Psychology, Midwifery and Social Work, whilst others progress onto full time employment or Apprenticeships.

There is a variety of exciting roles within Health & Care:

- Counsellor
- Social Worker
- Health Visitor
- Occupational Therapist
- Carer
- Nursing (Mental Health, Paediatric, Adult, Learning Disabilities)



NEW Teaching Ward opens to develop practical skills for students

The clinical skills room has been developed to replicate a hospital ward, and is fully equipped with nursing patient care simulators, a CPR training manikin that measures, monitors and analyses the performance of trainees, and equipment for cardiovascular monitoring, patient observations, and safe moving of patients.

The room will allow healthcare students to prepare for placements and employment, and will help learners to develop practical skills relating to the sector through assessment, scenarios and role play situations.

“

Health & Care students have the opportunities to take part in external trips, including visiting universities across the North West, such as University of Cumbria and Edge Hill University. On these visits, they have the chance to learn about their career and study options upon leaving College, and gain a glimpse of university life after LMC!

”



Full Time Courses & Apprenticeships

See page 26-27 for entry requirements

Care Profession Pathway

Level 1 • 1 year

All Pathway courses at LMC provide you with a positive foundation into studying at the College.

This course has been designed to support students who want to gain a basic knowledge of Health & Social Care and who may not have the mainstream entry requirements for other courses.

Health & Social Care

Level 2 • 1 year

This is an interesting and challenging Full Time course, which is designed for students wishing to gain employment in the Health & Social Care sector, or wishing to progress on to Health & Social Care Level 3. The course is a mixture of academic study and vocational experience.

This course enables you to gain a breadth of knowledge and experience of the many aspects of Health & Social Care.

Health & Social Care

Level 3 • 1-2 years

This course supports students to gain an understanding of the careers available in Health & Social Care. Providing excellent links to vocational practice, the course is taught by staff with industry experience. The core values of Health & Social Care are covered throughout the programme. Examples of subjects include; Human Lifespan Development, Principles of Safe Practice, Anatomy and Physiology, and Work Experience. You will be required to complete a Practical Evidence Portfolio to show technical skills developed on the programme.

Alongside three days in College, you will complete one day per week on placement, and will be assessed through coursework, examinations, and portfolios.

Additional entry requirements:

To study Health & Social Care Level 2 and 3, you must:

- Have a caring and compassionate nature and have a passion for working with people;
- Be able to communicate confidently;
- Demonstrate effective teamwork in a real-work environment; and
- Complete a satisfactory DBS check.

Level 1 ➡

Level 2 ➡

Level 3 ➡

Employment



Full Time Courses, T Levels & Apprenticeships

See page 26-27 for entry requirements

NEW T Level Foundation Year - Health

Level 2 • 1 year

This transition programme is for students who have the ambition to succeed on a T Level programme but are not quite ready to start. The foundation transition year is designed to give you effective, tailored preparation specifically to help you progress onto a T Level. You will learn all about health and social care values, communication and human lifespan development, and you will attend an industry placement to prepare you for T Levels.

For more information visit
lmc.ac.uk/courses

NEW T Level - Health

Level 3 • 2 years

The core element provides a variety of knowledge and skills relevant to the health route as a whole. The Supporting the Adult Nursing Team occupational specialism ensures you develop the understanding, behaviours and skills needed for future jobs. There is a 315-hour minimum industrial placement as a mandatory part of this course, which also prepares you for skilled employment. The T Level prepares you for the world of work, as well as providing significant preparation for study at Higher Education in a range of relevant disciplines.

Adult Care Worker Apprenticeship

Level 2 • 18 months

Adult Care Workers are frontline staff who work in care to make a positive difference to someone's life when they are faced with physical, practical, social, emotional or intellectual challenges. As an Adult Care Worker Apprentice you must be passionate about supporting and enabling people to live a more independent and fulfilling life.

Additional entry requirements:

To study this Apprenticeship, you must:

- Have a Level 2 Care certificate; and
- Complete a satisfactory DBS check.

Lead Adult Care Worker Apprenticeship

Level 3 • 18 months

Lead Adult Care Workers are the frontline staff who help adults with care and support needs to achieve their personal goals, and live as independently and safely as possible, enabling them to have control and choice in their lives. In addition, Lead Adult Care Workers have responsibility for providing supervision, frontline leadership, guidance and direction for others, whilst autonomously exercising judgement and accountability. This means leading and supporting others to comply with expected standards and behaviours.

Additional entry requirements:

To study this Apprenticeship, you must:

- Have a Level 2 Care certificate; and
- Complete of a satisfactory DBS check.

Level 2 ➔

Level 3 ➔

Level 4 ➔

Level 5 ➔



Hospitality & Catering

Studying Hospitality & Catering at LMC will give you access to a team of expert tutors who have professional experience of working at some of the UK's top hotels and restaurants. Through their extensive knowledge, you'll learn how to develop the skills and techniques needed to make it as a chef or hospitality team member in our industry standard Coulson's Restaurant and kitchen facilities.

Proud to work with



Industry experienced staff

You will be taught by highly qualified industry specialist tutors.



Sustainability

- Growing our own fresh produce in the on-site garden, as well as composting all food waste
- Beehive in the garden which produces honey to use in our restaurant



Real work environment

You'll regularly work in our award-winning Coulson's Restaurant with its contemporary interior, first class service, and mouth-watering menu. Behind the scenes, you'll access the industry standard kitchens, where you'll learn the fundamentals of cooking.

Progression opportunities

Following the completion of a Hospitality & Catering course, many students choose to progress onto further study at LMC or into employment, self employment, or an Apprenticeship.

Many apprentices are offered a permanent role within their company once they have completed their qualification.

There is a variety of exciting roles within the Hospitality industry:

- Sous Chef
- Chef De Partie
- Catering Manager
- Baker
- Food Inspector



Coulson's Restaurant fine dining restaurant on campus

Students have industry standard real work experience in the award-winning Coulson's Restaurant, with its contemporary interior, first class service and mouth-watering menu which is open to the general public.

Coulson's hosts specially themed evenings throughout the year to celebrate events such as Bonfire Night, Christmas and Valentine's Day, alongside the weekly Wednesday Lunch Menu.

“

This industry is so broad with workplaces including hotels, casinos and cruise ships to nursing homes, prisons and hospitals – and that's not including the 5-star luxury resorts and Michelin Star restaurants.

Alessandro Possamai
Hospitality & Catering Tutor

”



Full Time Courses & Apprenticeships

See page 26-27 for entry requirements

Hospitality & Catering Pathway

Level 1 • 1 year

All Pathway courses at LMC provide you with a positive foundation into studying at the College.

This course has been designed to support students who want to gain a basic knowledge of Hospitality & Catering and who may not have the mainstream entry requirements for other courses.

Introduction to Professional Cookery

Level 1 • 1 year

This course is designed to give you a broad range of cookery skills and food services to form an introduction into the Catering industry. The practical classes will include food preparation and food service, with the theory lessons covering the essential knowledge required to complete your assignment work.

Professional Cookery

Level 2 • 1 year

This course is designed to build on a broad range of cookery skills and food services, to prepare you for a career in the Hospitality industry. The practical classes will include food preparation and food service. The theory lessons will cover the essential knowledge and will complement the required assignment work.

Production Chef Apprenticeship

Level 2 • 15 months

This Apprenticeship is for those who are employed or wish to be employed as a Production Chef and would like to gain a qualification as a professional chef. You will work as part of a team in time-bound and often challenging kitchen environments, for example; schools, hospitals, the Armed Forces, care homes and high street casual dining or pub kitchens, and report to the Senior Production Chef or appropriate line manager.

Senior Production Chef Apprenticeship

Level 3 • 18 months

A Senior Production Chef may lead a brigade team or support the Head Chef in larger establishments. They also supervise production chef teams in a variety of kitchen environments, for example; schools, hospitals, the Armed Forces, care homes and high street, casual dining, or pub kitchens. On this Apprenticeship, you'll be responsible for the day-to-day running of kitchen service, across all areas and during all stages of production and supply.

Additional entry requirements:

- Level 2 qualification in a relevant subject area.

Level 1 ➡

Level 2 ➡

Level 3 ➡

Employment

Commis Chef Apprenticeship

Level 2 • 18 months

As a Commis Chef Apprentice, you will prepare food and carry out basic cooking tasks under the supervision of a more senior chef. Your primary objective will be to learn and understand how to carry out the basic functions in every section of the kitchen. You will have the opportunity, therefore, to experience, consider and value each section with a view to choosing an area where you feel most inspired.

Hospitality Team Member Apprenticeship

Level 2 • 15 months

As a Hospitality Team Member Apprentice, your role will be very varied and you will have to be adaptable and ready to support team members across the business, for example during busy periods. Specialist areas in hospitality include food and beverage service and food production.

Chef de Partie Apprenticeship

Level 3 • 18 months

As a Chef de Partie Apprentice, you will be responsible for running a specific section of the kitchen. You may manage a small team of workers, which you must keep organised so that dishes go out on time and the work area remains clean and orderly. In smaller kitchens, however, a Chef de Partie may work independently as the only person in their section. The Chef de Partie, also known as a station or section chef, reports to the Senior Chef and has a very important role in any kitchen.

Additional entry requirements:

- Level 2 qualification in a relevant subject area.

Hospitality Supervisor Apprenticeship

Level 3 • 18 months

As a Hospitality Supervisor Apprentice, you will study a range of core hospitality supervision knowledge, skills and behaviours and provide vital support to the management team and, ultimately, will be capable of independently supervising hospitality services and running shifts.

Additional entry requirements:

- Level 2 qualification in a relevant subject area.

Public Services

Public Services at LMC provides a range of experiences that demonstrate the scale and diversity of uniformed services. You'll have the opportunity to engage with a wide range of services and explore this exciting sector. Our courses are delivered by highly qualified, industry specialist tutors with knowledge across all key areas and the supporting infrastructure.

Proud to work with



Industry experienced staff

You will be taught by highly qualified industry specialist tutors.



Outside of the classroom

You'll be visited by guest speakers, each sharing their own experiences from different services, including Armed Police, Police Dogs, Fire and Rescue Service as well as multiple visits from the military services.

You will also take part in various activities to develop the skills and knowledge required in Public Services:

- Team building residential
- Army 'Look at Life' course
- Team building tasks
- Outdoor activities e.g. orienteering, hill walking, and rock climbing

Progression opportunities

Progression opportunities include both direct service entry and progression onto Higher Education, such as degrees in Criminology, Social Justice, Law and Politics.

There is a wide variety of exciting roles within the Public Services, including:

- Soldier
- Royal Navy Officer
- Prison Instructor
- Police Officer
- Firefighter



Students learn from the Public Services industry specialists

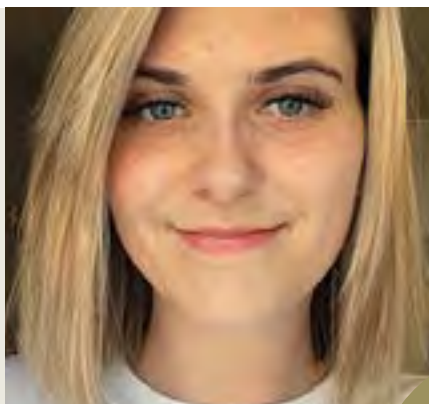
Students have the opportunity to take part in a Public Services Day, where guest speakers from The British Army, Armed Forces, Counter Terrorism Police UK and Cumbria Police come into College to discuss what it takes to enter the industry.

“

I made amazing friends at LMC who I would never have met if I hadn't taken Public Services. I also gained qualifications in GCSE Maths & English as well as Public Services Levels 1-5. LMC opened up a window of opportunity for me and I am very thankful for that.

”

Hollie Adams



See page 26-27 for entry requirements

Sports & Public Services Pathway

Level 1 • 1 year

All Pathway courses at LMC provide you with a positive foundation into studying at the College.

This course has been designed to support students who want to gain a basic knowledge in Public Services and who may not have the mainstream entry requirements for other courses.

Public Services

Level 2 • 1 year

This course is aimed at students who wish to pursue a career in one of Britain's Uniformed Public Services including the: Army, Royal Navy, Royal Air Force, Police, Prison Service and Fire and Rescue Service.

Uniformed Protected Services

Level 3 • 2 years

This course is aimed at people who are looking to gain entry into the Uniformed Protected Services, or Higher Education courses in the area. Throughout your time on the course, you'll speak to external speakers from different services and develop your understanding of service behaviour and requirements, alongside working towards fitness requirements.

Public Services HNC

Level 4 • 1 year

This course is geared towards a career in the varied and challenging Uniformed Protective and Public Services. You will develop your knowledge of public policies and how they are practically applied in UK Public Services.

Public Services HND

Level 5 • 1 year

This course is usually taken after successful completion of the HNC Level 4 programme and will develop your knowledge even further on public policies and how they are practically applied in UK Public Services.

Level 1 ➡

Level 2 ➡

Level 3 ➡

Level 4 ➡

Level 5 ➡



Sport

On a Sports programme at LMC, you'll have access to a fantastic range of activities and facilities, including our high specification all-weather 3G pitch, multi-use games area, the Fitness Suite and Sports Laboratory. Our courses are delivered by highly qualified industry specialist tutors who work across all key areas of professional sport and its supporting infrastructure. We develop professional sports teams onsite, including Morecambe FC.

Proud to work with



University of Cumbria



A wide variety of activities

We also offer the National Citizen Service programme and Duke of Edinburgh Award



Additional opportunities

Students have the opportunity to take part in a range of activities that develop the skills and knowledge required to progress into the Sports and Leisure industries including:

- FA Level 1 Coaching in Football Certificate and other coaching qualifications
- Opportunities for European visits for coaching and cultural experiences
- National Citizen Service (NCS) programme

Industry links

All courses offer industry placement opportunities that will develop the work based skills required for entry into the industry. Placement opportunities that students are supported in gaining include:

- Morecambe FC in the Community
- PE Teacher in secondary school
- Shadowing PE specialists in primary schools
- Leisure Assistant in a leisure centre
- Gym Instructor or Personal Trainer
- Sports Development Officer for governing body or council



Morecambe Football Club & LMC Strengthen their 30-Year Partnership

After over 30 years of a successfully active partnership, LMC has become the main training base and match day venue for the Morecambe Football Club (MFC)'s Category 3 Academy. This partnership presents regular opportunities for LMC's own Football Academy to progress academically and professionally.

“

I would recommend LMC as a fantastic place to study Sport and continue your development and interests. Your studies link to your development and help you to gain the knowledge, skills and experiences to pursue a career in sport in the future.

Chris Squirrel
Sport Lecturer

”



Full Time Courses & Apprenticeships

See page 26-27 for entry requirements

Sports & Public Services Pathway

Level 1 • 1 year

All Pathway courses at LMC provide you with a positive foundation into studying at the College.

This course has been designed to support students who want to gain a basic knowledge in Sport and who may not have the mainstream entry requirements for other courses.

Sport

Level 2 • 1 year

This course is geared towards a career in the fast growing industry of Sport. The course is suitable for school leavers who are seeking employment within the industry and provides a solid basis for progression to further study within this area.

Sport

Level 3 • 2 years

If you love sport or exercise, want a career in Sport and Leisure, or would like to study a sport related subject at university, this course is ideal for you. You will learn about aspects of sports development, fitness, and coaching, whilst completing industry placements and have access to the FA Level 1 Coaching qualification.

Sport HNC

Level 4 • 1 year

This course is geared towards a career in the fast growing Sports industry. You will develop your knowledge of the theory and application of sport and coaching within sporting environments. You will also assess and evaluate your personal and vocational skills, which are mapped to the requirements of employers in the Sports industry. During this course, you will also enhance your knowledge of the skills, and behaviours that underpin Sport to prepare you for further study or employment.

Sport HND

Level 5 • 1 year

This course is usually taken after successful completion of the HNC Level 4 programme and will develop your knowledge even further in Sport.

Additional entry requirements for all Sport courses:

To study all Sport courses you must:

- Demonstrate an appropriate level of fitness and sporting ability to take part in practical aspects of the course alongside an enthusiasm to study.

Level 1 ➡

Level 2 ➡

Level 3 ➡

Level 4 ➡

Football Studies

Level 3 • 1 year

This course is suitable for those who value the importance of academic study and training. In essence, it offers an opportunity for you to gain a recognised qualification whilst working on your football ability, strength and conditioning, as well as your football ambitions. The course offers you the chance to be trained by a UEFA licenced coach, on a Full Time basis, as well as competing at a high level of football.

Additional entry requirements:

To study Football Studies Level 3 you must:

- Demonstrate evidence of good football skills and have experience at county/club/weekend league participation



Sport students on a European trip to Alicante, Spain



Travel & Tourism

Travel & Tourism at LMC is the starting point to your dream of travelling the world. Students can choose to become Cabin Crew or to explore a variety of careers in the Travel & Tourism industry. Our tutors will use their years of experience in the industry and in depth knowledge of the travel sector to give you all the tools you need to succeed. Your round the world trip starts here!

Proud to work with



Exciting trips

We visit an aviation training centre where you will be completing practical training



Sustainability

- Travel & Tourism students use of technology including VR headset aids in creating a more sustainable learning environment.



Industry placements

Our students take part in industry placements, which provide them with the tools to develop their skills and gain real-world experience in the industry.

We have strong links with well-known industry names such as:

- TUI
- Parkdean Resorts
- Jet2holidays
- FlyMe Limited

Progression opportunities

Following the completion of a Travel & Tourism course at LMC, many students will have the opportunity to work in the industry in a variety of exciting roles such as:

- Airline Customer Service Agent
- Event Coordinator
- Holiday Representative
- Hotel Manager
- Tour Guide
- Travel Agent
- Cabin Crew Member

Students can also progress onto a related university course, such as BSc (Hons) Tourism Management, available at many universities across the country.



Students get 'behind the scenes' peek at future careers in tourism

Travel & Tourism students from LMC visited Treetop Trek at Brockhole for a taster of working in Cumbria's world-class tourism sector. The session included talks hosted by Cumbria Tourism's Managing Director and Treetop Trek Founder about future career opportunities in tourism.

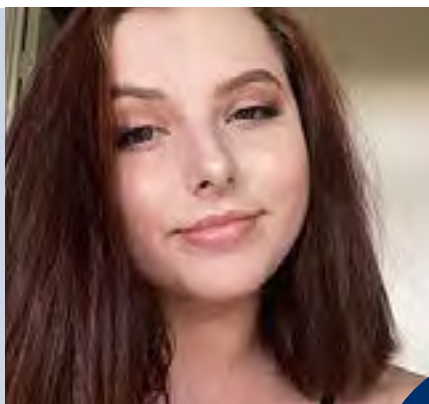
The students, who are all aiming for careers in the industry, got a sneak peek behind the scenes at the award-winning high ropes attraction on the shores of Windermere spending the day gaining hands-on skills with plenty of opportunities for training and development.

“

When working at Haven, not a day goes by where I don't put the skills College taught me to use. I have my tutors to thank for believing in me and helping me achieve the position I'm in today.

”

Storme Sutherland
Travel & Tourism Level 3



Full Time Courses & Apprenticeships

See page 26-27 for entry requirements

Travel & Tourism

Level 2 • 1 year

This course will open your horizons to the industry and is full of opportunities. Students wishing to gain detailed knowledge, skills and experience in the tourism sector will thrive on this course. You will gain skills that are current, relevant, and topical, to create a sound foundation for either working in the industry or progressing onto the Level 3 Diploma.

Travel & Tourism

Level 3 • 1 year

Level 3 Travel & Tourism is the perfect gateway into the exciting industry. It is a great choice if you are looking for an exciting role, which could take you around the world. You will gain an insight into all relevant sectors of the industry and our expert tutors will teach you the necessary skills to prepare you for life in the profession.

Air Cabin Crew

Level 2 • 1 year

This exciting qualification is designed to assist students in finding their first role working in Cabin Crew. The role of Cabin Crew Team Member is a diverse, social and well-travelled career that is popular among our students. The course is designed for students who want broad-based vocational preparation for employment in a Cabin Crew role, and covers everything from preparing for interview days, practical elements working inside the cabin, and first-hand experience from ex Cabin Crew tutors.

Additional entry requirements:

To study this course you must:

- Be 17 or over

To be an Air Cabin Crew member, you must:

- Be at least 5'2"

Level 2 ➡

Level 3 ➡

Employment



Traineeships

Traineeships are designed to combine education and training with work experience, giving young people (16-24) the opportunity to develop key employability skills. They are ideal for anyone who is not sure of their future career path, or who would like to trial different job roles and industries.

Traineeships are also available for 25-year olds with an Education, Health & Care Plan (EHCP).

Proud to work with



Sector focused skills

Gain a greater understanding of what employers need and require



A Traineeship helps to boost your prospects by offering the skills and experience that employers are looking for and, upon completion, allowing you to progress onto an Apprenticeship or Full Time course. You may even be offered a permanent position with your Traineeship employer.

Throughout the duration of your Traineeship, you are given real work experience, whilst developing crucial employability skills to help you in your chosen career path. The programme can last from six weeks up to one year and you are able to trial as many different industries within that time as you wish, with the content tailored to your individual career needs.

Alongside your high-quality work experience placement and essential work preparation training, we will also support you in gaining your Maths & English qualifications, should you need them.

As part of our collaborative work with Eden Project and the development of the Morecambe Bay Curriculum, you will have the opportunity to take part in crucial, community-based projects, enhancing your citizenship, entrepreneurial and employment skills and developing your knowledge and understanding of sustainability.

Full Time Courses - See page 26-27 for entry requirements

Preparation for Work

Level 1 • 6 weeks-1 year

This pathway is ideal for those who are ready to embark on the world of work, but wish to increase confidence and self-esteem around employment. This Traineeship will provide a greater understanding of what employers in each industry are seeking.

Eden Traineeship

Level 1 • 6 weeks-1 year

The Eden Traineeship is a skills development programme including a industry placement and two days in College per week, in which you'll develop Eden's three core values: sustainability, citizenship and entrepreneurship.



NHS Supported Internship

Level 1 • 1 year

This supported internship programme has been developed in partnership with DFN Project SEARCH and University Hospitals of Morecambe Bay NHS Foundation Trust (UHMBT). This is a full-time internship based at Royal Lancaster Infirmary (RLI).

The programme is aimed at young people aged 18-24 with an EHCP who aspire to paid employment. Working with a tutor and a Job Coach you will have the opportunity to learn and practice essential skills in a real working environment. You will have the opportunity to work across different departments at the RLI, to broaden your skillset and experience a range of roles.

The Hexagon

Student & Learning Centre



To find out more call

0800 306 306

or visit

lmc.ac.uk

Follow us @lmcollege



Disclaimer

Lancaster & Morecambe College has published all information about the courses it intends to offer in good faith and warrants that classes will be delivered with reasonable care and skill. The College reserves the right to cancel any class and vary the time, location, direction and content of any class it provides and the associated fees.

Lancaster & Morecambe College hereby expressly excludes liability for any indirect or consequential loss arising from its actions and limits compensation to a maximum of a full refund of any fees paid or the offer of a class of equivalent value.

Data Protection

The College will hold and use the information you have provided on your application or enquiry to inform you about studying at LMC. Your details will be retained until the autumn of your intended year of study or for two years if you are in year 10 at school. Your personal data will not be passed on to any third parties for marketing purposes. You can tell the College that you no longer wish to receive information from us by emailing us at info@lmc.ac.uk or calling us on 0800 306 306. To access the College's privacy notice about the use of students' personal data, please visit the College website: lmc.ac.uk and go to LMC Privacy Notice.

Open Days

HE & FE Open Day

Thursday 13 October 2022, 4.30pm-7pm

Open Day & T Levels Information Event

Wednesday 30 November 2022, 4.30pm-7pm

Apprenticeship & General Open Day

Tuesday 7 February 2023, 4.30pm-7pm

Creative Careers & General Open Day

Tuesday 7 March 2023, 4.30pm-7pm

General Open Day

Wednesday 19 April 2023, 4.30pm-7pm

Community Open Day

featuring Taster Sessions

Saturday 1 July 2023, 11am - 3pm

lmc.ac.uk/events



Lancaster &
Morecambe
College

Lancaster & Morecambe College
Morecambe Road, Lancaster LA1 2TY

