



Scan here for  
Adult  
Courses



Lancaster &  
Morecambe  
College

Celebrating 200 Years of Learning



# Adult Courses

Lancaster & Morecambe College

**Part Time Adult Advice & Enrolment Days**

14 July and 19 August • 10am-3pm • Lancaster & Morecambe College

## NEW COURSES

British Sign Language • Accounting Level 4  
Chocolate & Confectionery





# How to Apply

## STEP 1

Apply on our website [lmc.ac.uk](http://lmc.ac.uk) You'll need to create an account.

## STEP 2

Choose your appointment time for an interview, which may be over the phone or in person.

## STEP 3

After your interview, you can accept or decline your offer via your account.

**If you need any assistance at your interview, contact our Learning Support Team 01524 521571 or see the [Learning Support section on our website](#).**

### Don't have access to technology?

Pop into The Hex and our team can help with your application



## Welcome

At Lancaster & Morecambe College we are passionate about supporting our community and adult learners to achieve the skills needed to be successful, progress in work, further learning or to simply learn new knowledge and skills. We understand the demands life today can bring and many of our part time courses are delivered out in the community; in the evening or online to fit around work, family life and other commitments.

Our local and easily accessible campus, as well as our many community venues, provide a welcoming and supportive environment in which to study. Many of our teaching staff come from industry and bring their enthusiasm and love for the subject directly into your classroom. Our industry standard facilities, award winning careers advice and strong employer links means there is no better place to start than LMC!

**Becky Davenport, Adult & Community Manager**

## Why studying at LMC might be easier than you think...

### We're Local



- Our main campus is ideally placed between Lancaster and Morecambe
- Easily accessed by regular bus routes; close to the cycle paths and free parking on site
- Courses delivered in many easily accessible local community venues across the district

### We're Affordable

- Many of our courses are FREE to adults
- Student Loans available for some courses
- We're more affordable than many other local and online providers



### We're Supportive



- Financial support available to help with childcare, travel and course material costs, eligibility criteria applies see page 8 for more details
- Small classes available with some provision
- Dedicated Adult Additional Learning Support team to support in and out of class

### We're Highly Rated and Successful

- 95% of our adult learners passed in 2025
- Rated Ofsted GOOD February 2025
- Award winning Careers Advice



# 1577

## Enrolments for 19+ learners in 2025





## The Employer Hub & (UKSPF) UK Shared Prosperity Fund

The Employer Hub @ Lancaster & Morecambe College (LMC) has been proud to have been part of the UK Shared Prosperity Fund (UKSPF) project since September 2023. During this time, we have continued to deliver high-quality business support, education, and workforce development opportunities to employers across the district. The project has centred on addressing local skills shortages, supporting business growth, and enabling employees to gain the skills required to progress within their organisations.

A dedicated team of specialist lecturers, and project administrators have worked collaboratively with businesses to identify training needs and deliver responsive, high-impact provision. Training has been closely aligned with local labour market priorities, including sustainability, digital transformation, leadership development, sector-specific upskilling, and support for organisations working towards decarbonisation.

The Employer Hub has delivered both accredited qualifications and bespoke non-accredited training, complementing mainstream provision and creating clear progression routes into further education, Apprenticeships, and employment.

Training has supported businesses to address skills shortages, develop staff capability, increase sustainability awareness, plan for decarbonisation, and upskill employees in sector-specific areas. Introductory courses and qualifications have also enabled progression into Apprenticeships and further education.

## LMC in the Community

In the last year the Adult Learning Community Team has been working with new and existing partnerships in various community venues across the district. Through the work with Acorn Recovery, Lancashire Women, Veteran Support groups, Lancaster and District CVS; Morecambe Bay Poverty Truth Commission and Stanleys we've been supporting and enabling learners to achieve their first steps back in education. We've enrolled 52 new learners through our Progression Pathway, including units in interpersonal skills; team building; communications skills for work; stress management; tenancy ready and drug awareness.

Over 260 learners have engaged with the college through Tailored Learning funding. Completing courses including Chocolate Making, Cakes and Bakes, learning to create an Afternoon Tea; how to hang a door; how to change a tap washer and unblock a sink; laying a patio and how to change a socket

We've been tackling Digital confidence through our drop-in sessions at The Link in the West End and The Cornerstone in Lancaster with over 150 learners accessing sessions to improve their Digital Skills. Through the expertise of our tutors learners have become more digitally aware; confident in using essential apps; online banking; virus software; uploading photos and keeping themselves safe when using the internet.

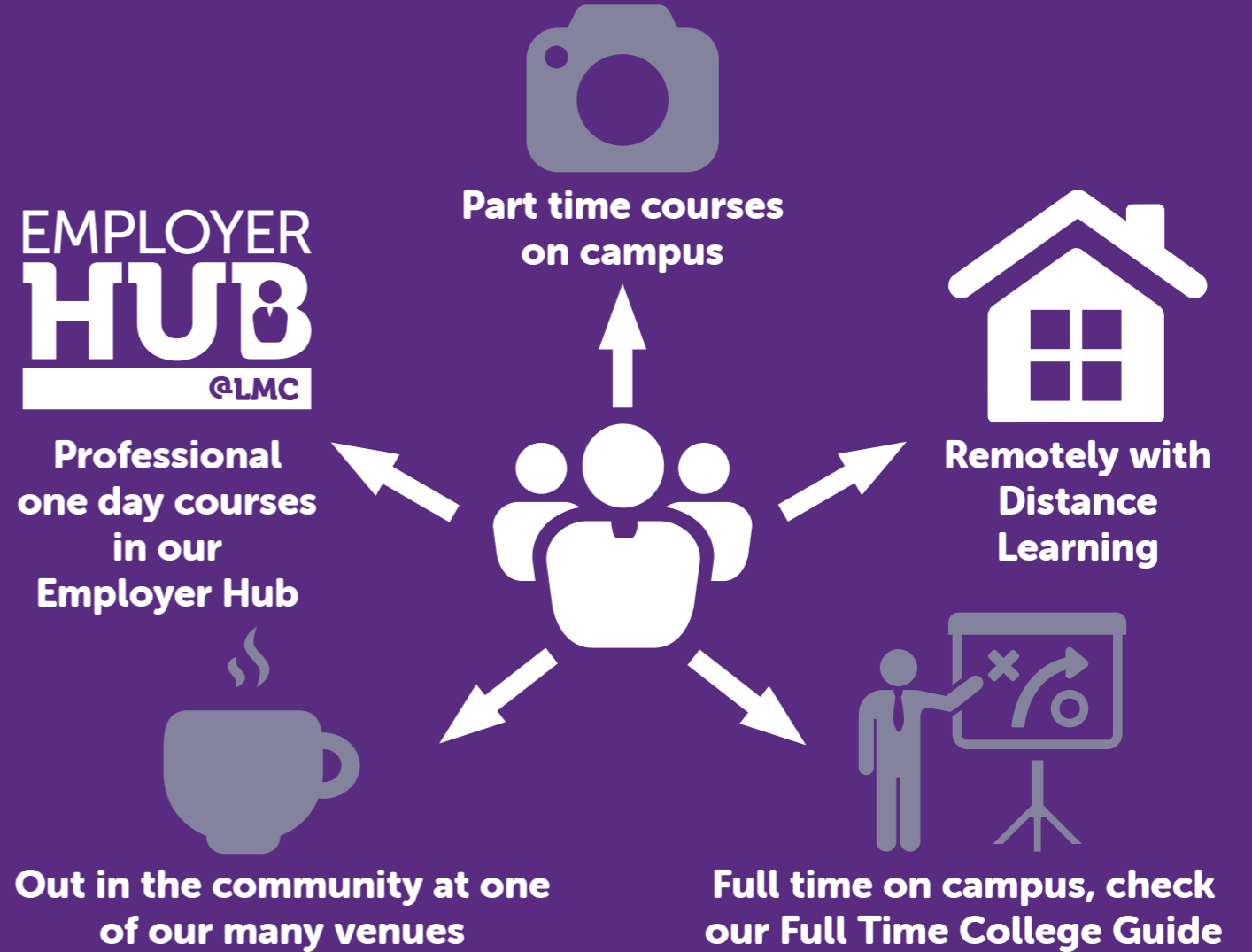
As one learner commented, *"This has been life changing."*



## LMC, working in partnership with...



# Did you know there are many ways to learn with LMC?



At LMC, we are committed to supporting our community, individuals, and businesses to thrive and fulfil their potential, so why not take a look at our wide range of part time courses on offer today!

Scan here for **Adult Courses**



**Part Time Adult Advice & Enrolment Days**  
14 July and 19 August • 10am-3pm • Lancaster & Morecambe College

Did you know...

In 2025/26

97%

of adult learners said the course helped them to be work ready

96%

of adult learners have a positive destination when they finish their course



Lancaster and Morecambe district supports

5,000+ businesses

Rated as

**Good** by **Ofsted**

we make a **strong contribution to meeting skills need**, and

regularly support **700+**

**employers**

with training and developing their employees



100%

of our Access learners in 24/25 progressed to Further Education or Higher Education

The largest employment sectors include;



**Health, Social Work & Care, and Education**

representing **32%** of the employment within the district

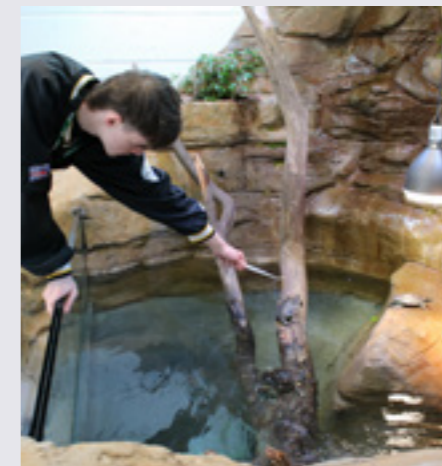


**Construction, Manufacturing and Technical**

sectors support **28%** of the district workforce

## New Developments on Campus

We are constantly improving our campus to create a safe and modern learning environment for the whole College community. Recent developments include significant upgrades to our Engineering department, featuring state-of-the-art equipment and facilities. We have also enhanced our Animal Studies area with the addition of a dedicated aquatic room, home to a variety of exotic fish, as well as a specially designed pond where terrapins can thrive.



**Lauren Cannar**

**Courses Taken: AAT Accounting Level 2 to Level 4**

Lauren joined Lancaster & Morecambe College in 2022 to study AAT Accounting Level 2 and has progressed with us through to AAT Accounting Level 4.

She chose to study at the College as she had previously been a student after leaving school and knew the courses were of a high standard. Many of the students on the Level 4 course have progressed together from Level 2, supporting and guiding each other along the way and building strong friendships and a valuable support network.

*Our tutor, Denise Almond, has taught us across all three levels. She is very understanding of how we all learn and puts 100% into every lesson.*

The AAT courses cover the key knowledge and practical skills needed to work in the finance industry, helping students build confidence in completing a range of accounting tasks. AAT Accounting Level 4 is the highest level offered at LMC and it develops the skills gained in previous levels to maximise opportunities for progression in new or current employment.

*What I've gained most from this course is confidence. I started AAT Accounting Level 2 as a very shy and quiet student, but as I have become more knowledgeable, my confidence has also strengthened. After passing each AAT level it has opened up so many doors for me at work, as with each new skill I learn I am able to pursue more tasks at work.*

When asked what she would say to someone thinking of doing Accounting courses, Lauren said:

*Go for it! I came into this as an older student as I was 31, I had many talks with myself about being too old to pursue a new career, but I would not look back now! You are really never too old to learn!*

## Free Courses For Jobs

Adults aged 19+ can access a FREE Level 3 course with support available from the Government, helping you gain skills that employers value, improve your job prospects and earn a good wage whatever your stage in life.

### Eligibility

Learners living in non devolved areas:

- Aged 19+ earning under £26,800 gross salary regardless of prior attainment
- Aged 19+ unemployed regardless of prior attainment

OR

- You are aged 19 - 23 earning over £26,800 don't already hold a full Level 3 qualification

Learners Living in Lancashire:

- Aged 19+ earning under £29,431 gross salary regardless of prior attainment
- Aged 19+ unemployed regardless of prior attainment
- Aged 19+ and under formal redundancy consultation (formal letter from employer required)

OR

- You are aged 19 - 23 earning over £29,431 don't already hold a full Level 3 qualification

PLEASE NOTE: This information is subject to change

See courses throughout the guide listed as **Free Courses for Jobs**

[lmc.ac.uk/courses/free-courses-jobs](http://lmc.ac.uk/courses/free-courses-jobs)

Part Time Adult Advice & Enrolment Days - 14 July & 19 August 2026, 10am-3pm



# Course Funding & Finance

## Many of our learners study for FREE!

Don't be put off by the cost of studying, many of our learners study for free. Eligibility depends on your individual circumstances and the course you have chosen to study.

You may also be able to access the Learner Support Fund for financial support for some of the additional costs when studying, whether that is travel costs, equipment or uniform for your course or childcare costs.

You may also be eligible for FREE study if you are unemployed and receive an eligible benefit and you are taking the course to help you find employment. You may be eligible for a subsidised rate of £25 per course if you are employed and in receipt of certain benefits – look for courses marked with ♦ throughout this course guide.

### Can I study for free?

If you are studying a legal entitlement course such as English, maths or Essential Digital skills Entry Level/Level 1/Level 2, or are unemployed, or you are earning under a required amount, then the answer is YES.

- Learners living in Lancashire must be earning £25,750 or under for courses at Level 2 or below
- Learners living in a non devolved area must be earning £26,800 or under for courses at Level 2 or below

When you enrol, you will need to provide evidence of your salary or benefits. If you have achieved the qualification to be studied previously, or have an existing qualification at a higher level, then fees will apply.

More information can be found on the opposite page about earnings thresholds and what areas are not funded

### What if I need to take out a loan?

Advanced Learner Loans are also available for eligible courses and available to anyone over the age of 19, regardless of individual circumstances, studying Level 3 or Level 4 courses. The loan will fully cover your fees and will only need to be repaid when you earn over a certain threshold and subject to the payment plan assigned. More information is provided on application for the Advanced Learner Loan. Look for courses marked with ★

### I need to pay for the course?

If the course is available for online enrolment, you can pay online as part of the enrolment process. You can also pay by cash or card in the Hex or by phoning our Finance team on 01524 521205.

### What are Tailored Learning courses?

These are non qualification based courses that offer an introduction into courses. They can be free or at a very low cost depending on your financial situation.

### Will I be entitled to any financial help while studying at College?

You may be entitled to financial support while you are studying, through the College's Learner Support Fund. Help is available with transport, uniform and kit costs and childcare. It is easy to apply via our Pay My Student digital portal.

### What about Level 3 courses or above?

Our Level 3 courses will be free if you are studying one of the courses below and meet the criteria listed on opposite page 9.

- **Understanding Mental Health**  
Level 3 NCFE Certificate
- **Understanding Autism**  
Level 3 NCFE Certificate
- **Understanding Principles of Dementia Care**  
Level 3 NCFE
- **AAT Accounting**  
Level 3 Diploma
- **Professional Cookery**  
Level 3 Diploma
- **Warehousing & Storage**  
Level 3
- **Lead Adult Care**  
Level 3 NCFE Diploma

If you are studying for a Level 3 that is not in the list/is not available on the Legal Entitlement list, or you do not meet the eligibility criteria, you will be required to take out an Advanced Learner Loan.

## NEW Funding & Eligibility Information

We are proud to offer funded training opportunities to help you develop new skills and progress your career. Funding is provided in line with the Lancashire Combined County Authority (LCCA) and Department for Work and Pensions (DWP) acting through Department for Education DfE

### Income Thresholds

Funding is targeted to support those on lower incomes:

#### Learners living in non devolved areas:

- Aged 19+ earning under £26,800 gross salary regardless of prior attainment
  - Aged 19+ unemployed regardless of prior attainment
- OR
- You are aged 19 - 23 earning over £26,800 don't already hold a full Level 3 qualification

#### Learners Living in Lancashire:

- Aged 19+ earning under £29,431 gross salary regardless of prior attainment
- Aged 19+ unemployed regardless of prior attainment
- Aged 19+ and under formal redundancy consultation (formal letter from employer required)

OR

- You are aged 19 - 23 earning over £29,431 don't already hold a full Level 3 qualification

*PLEASE NOTE: This information is subject to change*

### Who is Eligible?

Funding is available to learners who meet the residency eligibility criteria and do not live in the following devolved areas:

- Cambridgeshire and Peterborough
- Devon and Torbay
- East Midlands
- Greater Lincolnshire
- Greater London Authority
- Greater Manchester
- Hull and East Yorkshire
- Liverpool City Region
- North East
- South Yorkshire and Tees Valley
- West Midlands
- West of England
- West Yorkshire, York and North Yorkshire

**Contact our Student Money team for more information: [studentmoney@lmc.ac.uk](mailto:studentmoney@lmc.ac.uk)**

## New courses coming

New funding means we can deliver Personal Development courses on your door step. September 2026 will see the launch of our **Community Engagement** programme which will include:

- Budgeting
- Employability
- Progression
- Personal development skills

All of these sessions will be held at LMC main site and in various locations in the community.

The courses give you a gentle introduction back into learning through manageable chunks of learning and qualifications. The courses can be started at any point and run throughout the week and academic year.

Check out further information on page 22 or on our website under Part Times Courses; Community Engagement.



# Support at LMC

We pride ourselves at LMC on the support we provide to each of our students to enable them to achieve. All students can apply for support to help them access our courses.

If there is anything that could get in the way of your learning and participation at College, please speak to your tutor or one of the support team prior to starting on your course. The team will work with you to develop your skills, confidence, motivation, independence and expertise in learning.

## Support may include:

- Advice and referrals to a range of other specialist services
- Support with your wellbeing
- Assistive technology
- Mobility support
- Exam arrangements
- Help with coursework/homework
- Laptop loans
- Extra support in as well as out of class
- Access to support online to fit in around you



We realise that every student is different and do what we can to make College accessible and inclusive to all.

To find out more contact  
[learningsupport@lmc.ac.uk](mailto:learningsupport@lmc.ac.uk)  
**01524 521245**

Or complete our online contact form



## Meet our staff

Having left school without achieving any of my GCSEs and being informed that I had severe dyslexia, I decided to apply to study various Adult Education courses at college whilst working a number of part-time jobs. At that time, I didn't really have a career path in mind, but knew that if I gained my GCSEs this would be a good starting point.

College was very different to school, studying alongside other adults suited my style of learning. The tutors were more aware of my learning needs and were very supportive. I also utilised the learning support that was offered to me by attending group workshops and 1:1 sessions, where I was provided with tips and guidance on how to improve my work.

After successfully gaining my GCSEs, I progressed onto a Level 3 qualification, and from that point on there was no stopping me. I eventually decided to go into teaching as I wanted to help others with learning difficulties to have the opportunity to achieve.

**Joscelyn, Head of Learning Support**



## Matthew Elwers

**Courses taken: Access to Higher Education**

**Profession: Teacher**

Matthew had a dream to go to university and become a Teacher, something he didn't have the qualifications for until he came to Lancaster & Morecambe College.

Returning to education at a later date, to train to become a teacher the Access course seemed like a great way to begin that journey. On the course Matthew studied English, Sociology, Criminology and Childhood Development, which further confirmed that he did want to go into teaching.

We asked Matthew, what were the most enjoyable aspects of your course, and what key skills and behaviours did you learn during your time at LMC?

*I particularly enjoyed the English lessons and the Criminology part of the course. The key skill I gained was an improvement in my academic writing skills. Before attending LMC I had been out of education for 13 years, and the course enabled me to learn the skills that would support me to succeed in my degree and beyond.*

During his time at LMC, Matthew was able to learn lots of new skills and another key skill was gaining confidence in knowing he could achieve further success in education.

Matthew is now a teacher at Morecambe Road School, and leads a satellite provision based here at LMC. Part of this role is teaching English, which he never would have thought would be his preference before studying on the course, and this is now one of the aspects he enjoys.

Matthew's biggest accomplishment since leaving LMC has been achieving a 2:1 degree and his PGCE which will allow him to become a teacher. This is amazing that he set out with a goal and achieved it through pure determination and support from the College. We asked him what he would say to someone who was thinking about doing the course and he said...

*It's a great place to learn. I bring children over from a special needs school who benefit immensely from the vocational learning there.*



## Maths/English & Digital Skills

### Don't have your Maths, English or Digital qualifications? Don't let that hold you back...

We offer FREE Maths, English and Digital workshops on the main College campus, at The Link at West Street and out in the community at venues such as Morecambe Library, Brew Me Sunshine in Morecambe and Cornerstones in Lancaster. Join our workshops to achieve new skills in order for you to be able to progress in work, life or to university. The classes are timetabled to fit around family and work commitments. Functional Workshops are available where we offer Functional Maths and Functional English from Entry 1 – Level 2.

The Essential Digital Skills course is designed to support the development of digital skills required for everyday life, work and further study and includes internet safety/cyber security. It provides a nationally recognised digital skills qualification and is a step towards further study. We offer Essential Digital Skills at Entry 3 and Level 1 alongside Level 2 Digital and IT Skills Award, which give you the opportunity to develop your Word and Excel skills.

Get in touch with one of our tutors to discuss the range of courses we offer.

**01524 521285 • [lmc.ac.uk/part-time](http://lmc.ac.uk/part-time)**

## ESOL English for Speakers of Other Languages

### Do you need to develop your reading, writing, speaking and listening skills?

We offer ESOL classes at the main LMC campus and in the community during the daytime and evening. Depending on your financial situation, these courses may be FREE. Courses are designed to help you develop your confidence and understanding with the English language, and help you progress in work and everyday life.

### Before you start a session

You will need to attend an assessment session first to make sure we place you in the right group for your level. These assessment sessions are at College - **Lancaster & Morecambe College, Morecambe Road, Lancaster LA1 2TY**. Assessments are **Wednesday 10am-12pm in The Hex**, every week in term time.

Please bring with you evidence of your Residency Status.

**For example: ARC card • Passport • VISA • Residency Permit • Home Office documents**

If you are working or have benefits, please bring with you evidence of your income.

**For example: Pay slip • Universal Credit statement**

**Find out more by contacting [ESOLGroup@lmc.ac.uk](mailto:ESOLGroup@lmc.ac.uk)**

Part Time Adult Advice & Enrolment Days - 14 July & 19 August 2026, 10am-3pm

# Apprenticeships

A growing number of adults are selecting apprenticeships as a means to gain the essential knowledge, skills, and industry experience required for starting a new career or advancing in their current roles. Apprenticeships combine practical training in a job with study. As an apprentice, you'll be an employee earning a wage; work alongside experienced staff; gain job-specific skills; and get time for training and study related to your role. They take 1-5 years to complete depending on their level.

**MYTH 1: Apprentices are less capable than other learners**

**REALITY:** Apprentices meet the same entry requirements as many academic routes and must balance work, study, assessments, and professional standards.

**MYTH 2: Apprentices don't do any studying**

**REALITY:** Apprentices must complete off-the-job training, independent study, assignments, assessments, and professional development activities.

**MYTH 3: Apprentices are just cheap labour**

**REALITY:** Apprenticeships are regulated programmes with funding, training plans, mentoring, and minimum off-the-job learning requirements.

**MYTH 4: Apprentices don't have real responsibility at work**

**REALITY:** Many apprentices manage projects, handle clients, use specialist equipment, and contribute meaningfully to business outcomes.

**MYTH 5: Apprentices have fewer career options later on**

**REALITY:** Apprentices can progress into higher-level roles, further apprenticeships, professional qualifications, management, or higher education.

**MYTH 6: Apprentices have lower lifetime earnings**

**REALITY:** Many apprentices earn earlier, avoid student debt, and progress quickly, leading to strong long-term earning potential.

**MYTH 7: Apprenticeships are only for teenagers**

**REALITY:** Apprentices of all ages take part, including career changers in their 30s, 40s, and 50s.



**Caitlain Woods**

**Courses taken:** Business Administration Level 3

**Current job:** Administrative Assistant

Caitlain studied her Apprenticeship at LMC after taking on a new position at Lancaster University within the Organisational Development team, to strengthen her skills as an Apprentice.

As part of the Apprenticeship, you are required to carry out a significant project. Caitlain describes this project as being the most enjoyable part of her course as it allowed her to choose an area to work with and really developed her knowledge and confidence in that area.

*I really enjoyed the project, as I got the chance to work on an area of the business which previously I didn't have anything to do with. As a result of this I learnt a lot about the project area and worked with new colleagues from across the institution. Writing my project report and presentation helped me to recognise the progress I had made.*

An Apprenticeship is a great way to enhance your knowledge, skills and behaviours as you complete a qualification along side working on the job. It gives you the opportunity to gain hands-on experience in various areas of business, which can be invaluable in advancing your career.

*Completing the apprenticeship helped me to develop my communication and project management skills, which I have implemented into my job role. Throughout my time on the apprenticeship, I developed my skills across all areas of my role. I also learnt new leadership skills and behaviours and am now more resilient, self-aware and a better communicator. All of these new skills have been recognised by my employer as I was asked to step up and take on more responsibilities.*

Caitlain's hard work was recognised at the 2024 Lancashire Apprenticeship Awards where she was honored as the overall winner in the Advanced Apprenticeship category.



Watch this space!  
**New courses coming soon**

# Distance Learning

## FREE, ON-LINE LEARNING IN YOUR OWN HOME

With our Distance Learning courses, you can choose to study a range of subjects and gain qualifications from the comfort of your own home. We currently offer course in the following categories:

- Health & Childcare
- Mental Health & Wellbeing
- Business

We understand that it can be difficult for adults to attend class-based courses when they are juggling family life and work commitments, but this shouldn't stop them from being able to learn new skills and gain crucial qualifications.

Our Distance Learning courses allow adults to study at their own pace and develop new skills and knowledge. Whether you are looking to gain a qualification to enhance your employment prospects, or you just enjoy exploring new subjects, our team will be on hand to support you throughout the course and help you to achieve.

Courses vary in duration and subject areas, and we are constantly reviewing our provision in response to local labour market information and demand from learners and employers.

### Our most popular courses include:

- Awareness of Mental Health Level 1 and Level 2
- Special Educational Needs and Disability Level 2
- Understanding Autism Level 2

Our Level 1 and Level 2 Distance Learning courses are **FREE** for adults (19+) and we have a range of **Level 3** courses that are available as part of the **Free Courses for Jobs** scheme, see more information on page 6.

Alternatively, you may be eligible for an Advanced Learner Loan to cover the cost of a Level 3 course. See page 8 for more information on funding.

Part Time Adult Advice & Enrolment Days - 14 July & 19 August 2026, 10am-3pm



**Elaine Ravenhall**

**Teaches:** Part Time Work Based Skills Advisor, Health and Social Care

Elaine joined LMC in 2018 as a Part Time Work Based Skills Advisor, Health and Social Care for the Distance Learning courses alongside her advisory role for the Alzheimer's Society, as she was missing working in education. The combination of the two roles has allowed her to use her knowledge to educate and support others who want to develop their learning and this combination of two different jobs works brilliantly for her.

*Having worked in a number of FE colleges over the years I wanted to remain part of the FE community whilst also working in the health and social care sector. Even though I only work with learners through distance learning, it is possible to establish a rapport with a learner. I really like to see the learners develop their confidence as they progress in their chosen course – particularly those who have returned to education for the first time since leaving full time education. I like trying to make a connection with them and to share my own knowledge and experience with them to help them gain a better understanding of the underpinning knowledge of the vocational qualification.*

Elaine's teaching activities include tutor assessments and internal moderation of a wide range of Distance Learning courses from Level 1, 2 and 3. Some of the most popular courses we offer as distance learning are the courses touching on the topic of mental health awareness and care. Elaine has an in depth knowledge particularly of this topic as she is also a qualified registered Mental Health Nurse and holds her NVQ Level 3 in Early Years.

*I would say have a go! The courses are great for adult learners who want a flexible way of learning, be it new knowledge or as a refresher. We are a very understanding and listening team and would understand if they needed some additional time – life goes on.*

# What the different levels mean

With so many different qualifications, it can be hard to know what they mean and where they might lead to next. To help you understand, we've created a summary of what the levels mean highlighting academic, vocational and work-based routes to Higher Education.

<b>5</b>	<b>Foundation Degree</b> FdA or FdSc	<b>HND</b> Higher National Diploma	<b>Higher Apprenticeship</b>
<b>4</b>	<b>Foundation Degree</b> FdA or FdSc	<b>HNC</b> Higher National Certificate	<b>Higher Apprenticeship</b>
<b>3</b>	<b>A Levels</b> Grades A-E	<b>T Levels &amp; Level 3 Certificate</b>	<b>Advanced Apprenticeship</b>
<b>2</b>	<b>GCSE</b> Grades 4-9	<b>Level 2 Diploma</b>	<b>Intermediate Apprenticeship</b>
<b>1</b>	<b>GCSE</b> Grades 1-3	<b>Level 1 Certificate</b>	
<b>Entry</b> 1,2 and 3	These are foundation level studies that provide Basic Skills/Skills For Life and a pathway to a Level 1 qualification		



## Art & Design

### Creative Crafts using Print Making

NCFE Level 1 Award  
12/01/2027 **Tue, 6pm-9pm**  
B32927 Main Site 12 weeks £124.10

This course will allow you to develop skills in printmaking by developing a portfolio of work that demonstrates your practical and technical skills. You will learn how to use equipment and techniques safely, as well as research practitioners working in the field.

### Photography

NCFE Level 1 Award  
22/09/2026 **Tue, 6pm-9pm**  
B36765 Main Site 12 weeks 104.10

On this course, you will learn and understand the technical abilities of your camera and creatively explore photography in different workshops. You will develop a digital portfolio of work including examples of your work in light photography, film editing, green screen, and darkroom photography.

### Animal Portraiture Drawing

24/02/2027 **Wed, 6pm-9pm**  
B36913 Main Site 5 weeks £90

This is an introductory course in the fundamental skills of drawing animals, aimed at beginners who would like to build up their confidence in this specific focus of drawing. On this course, you will explore basic skills such as tone, form, texture, composition and perspective.

## Sustainability

### Environmental Sustainability

Level 2 Award  
16/03/2027 **Tue, 5.30pm-8.30pm**  
B64452 Main Site 12 weeks £102.60

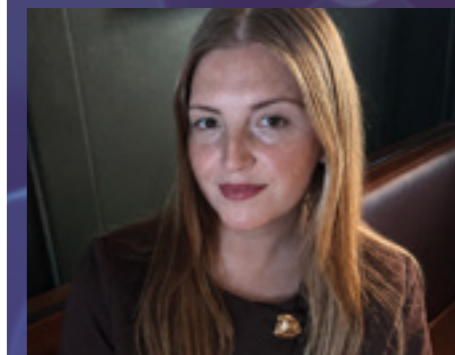
This Level 2 Award in Environmental Sustainability course is designed to provide you with knowledge and understanding of the basic principles of sustainability and environmental impacts. It introduces you to key issues in sustainability, raising awareness of the topic and encourages you to consider your role in helping to make sustainable choices



You may be eligible to study for FREE – look for courses marked with ♦ You may also be able to apply for an Adult Learner Loan – look for courses marked with ★ See page 8 for further details

### Part Time Adult Advice & Enrolment Days

14 July & 19 August  
10am-3pm



**Rebecca Blackburn**

**Course: Photography**

Rebecca, coming from a Marketing background, was keen to improve her skills in photography and didn't want to travel far to do so. Whilst working at LMC and researching online for courses nearby, she was delighted to learn that LMC were running a photography course, which also awarded her with a NCFE Level 1 Award.

*"I felt confident with taking pictures and film on my phone but wanted to expand my knowledge with using professional cameras. It had been a while since I was at university, where I had last used a camera, so I definitely needed a refresher".*

This part time photography course provides knowledge for both beginners and those with some experience in photography. The course allows students to understand the technical abilities of cameras and to be creative while exploring various themes each week, and also learning how to edit photos in Photoshop and Lightroom using Apple Mac computers.

*"My favourite part of the course was choosing my own photography theme for my digital portfolio. I ventured out to the Lake District and got some brilliant photos of the lakes, mountains and countryside, which I then edited in professional software to really make the images a class above the usual phone imagery that I was used to."*

After completing the course, Rebecca was able to transfer the skills she learnt into her daily work and share her knowledge with her colleagues.

*"I would recommend the course to anyone whether you are interested in photography as a hobby or in your career. I am much more confident using professional cameras now and have since built on my skillset further".*



## Leadership, Management & Business

### Leading Internal Quality Assurance

C&G Level 4 Certificate  
**B32959 Employer Premises £832**

This qualification is designed for those who work, or wish to work, in the field of Assessment & Internal Quality Assurance (IQA). The course is designed to support the assessment and quality assurance of Apprenticeships, Vocational Qualifications, Awards, Certificates and Diplomas.

### Assessing Vocational Achievement

C&G Level 3 Certificate  
**B35936 Employer Premises £811 ★**

This qualification is designed for those who currently work, or wish to work in the field of Assessment. This is designed to support the assessment and quality assurance of all Apprenticeships, Vocational Qualifications, Awards, Certificates and Diploma.

### Principles of Team Leading

Distance Learning  
 TQUK Level 2 Certificate  
**B35532 Online 25 weeks FREE**

This course is for those who wish to gain further skills and progress in the workplace. It is suitable for anyone who is new to a team leading role, or hoping to advance in their careers.

### Information, Advice and Guidance

Distance Learning  
 TQUK Level 2 Certificate  
**B36654 Online 25 weeks FREE**

This course aims to provide an in-depth understanding of providing effective information, advice and guidance (IAG) to support customers, clients and colleagues, including signposting, referrals, record keeping, confidentiality and communication/listening techniques.

### People Practice CIPD Level 3 Foundation Certificate

Level 3 Foundation Certificate  
**25/09/2026 Fri, 10am-1pm**  
**B32232 Main Site 33 weeks £1350**

This course is suitable for those embarking on a career in Human Resources, or for those already in a support role and looking to progress. This pragmatic course covers a variety of HR topics including the legal aspects of HR management, analysing and using HR information, resourcing talent, recruitment, and learning development tools and techniques for motivation.

### Quality Assurance Assessment

C&G Level 4 Award  
**B30664 Employer Premises £811**

This qualification is designed for those who currently work, or wish to work, in the field of Assessment and Internal Quality Assurance (IQA).

### Principles of Leadership & Management

CMI Level 3  
**Unit 331 Approaches to Managing & Leading People & Teams**  
**12/05/2026 Wed, 9am-4pm B64443 3 weeks £350**

**Unit 330 Organisational Awareness for First Line Managers**  
**09/09/2026 Wed, 9am-4pm B64443 3 weeks £350**

**Unit 331 Approaches to Managing & Leading People & Teams**  
**11/11/2026 Wed, 9am-4pm B64443 3 weeks £350**

**Unit 309 Responding to Conflict in the Workplace**  
**13/01/2027 Wed, 9am-4pm B64443 3 weeks £350**

**Unit 316 Monitoring Quality to Improve Outcomes**  
**03/03/2027 Wed, 9am-4pm B64443 3 weeks £350**

The CMI range of qualifications are aimed at practising or aspiring managers who supervise or manage a team to achieve clearly defined outcomes.

**Part Time Adult Advice & Enrolment Days • 4 July & 19 August, 10am-3pm**

### Lean Organisation Management Techniques

Distance Learning  
 TQUK Level 2 Certificate  
**B35853 Online 25 weeks FREE**

This course covers the skills and knowledge needed to use lean organisation and business improvement techniques in business and to work effectively in a team.

### Principles of Business Administration

Distance Learning  
 TQUK Level 2 Certificate  
**B36657 Online 25 weeks FREE**

This course will give you the underpinning knowledge that is required to ensure you can successfully work in a range of different environments in a business administration role. You will develop essential knowledge of how to carry out administrative tasks, such as how to manage information and to support events.

## Leadership, Management & Business

### Leadership & Management

CMI Level 5  
**Unit 507 Principles of Coaching and Mentoring**  
**08/09/2026 Tue 12.30pm-4.30pm B64422 3 weeks £380**

**Unit 525 Using Reflective Practice to Inform Personal and Professional Development**  
**03/11/2026 Tue 12.30pm-4.30pm B64422 3 weeks £380**

The CMI range of qualifications are aimed at practising or aspiring managers and leaders who are typically accountable to a senior manager or business owner. The primary role of a practising or aspiring manager and leader is to lead and manage individuals and teams to deliver aims and objectives in line with organisational strategy. Role and responsibilities may also include but are not limited to developing teams and individuals, creating operational plans, planning and managing projects, managing change, managing finance, resources and identifying new approaches to business activities, managing quality and continuous improvement as well as managing the human resources function.

## Finance

### Accounting

AAT Level 2 Certificate  
**09/09/2026 Wed, 9am-4pm**  
**B32906 Main Site 35 weeks £892 ◆**

This course is ideal for anyone wishing to study accountancy, and profiles elementary business and personal skills transferable to any sector. The purpose of this course is to offer the foundation accounting knowledge needed to progress to employment or further study in accountancy and finance.

### Accounting Professional Diploma

Level 4  
**08/09/2026 Tue, 9am-4pm**  
**B34289 Main Site 18 months £2,573 ★**

This course is ideal for anyone interested in pursuing a career in accountancy and finance, offering technical training. The purpose of this course is to increase the skills developed on the Accounting (AAT) Level 3 Advanced Diploma. This can maximise opportunities in new or current employment.

### Accounting

Free Courses for Jobs  
 AAT Level 3 Diploma  
**10/09/2026 Thu, 9am-4pm**  
**B33847 Main Site 35 weeks £2,573 ★**

This course is ideal for anyone wishing to study accountancy and finance alongside a range of complementary business and personal skills. The purpose of this qualification is to ensure that students are well prepared to progress into a career in business, finance or professional accountancy, or into Further Education.

You may be eligible to study for FREE – look for courses marked with ◆ You may also be able to apply for an Adult Learner Loan – look for courses marked with ★ See page 8 for further details

**Please note:** all course fees are subject to funding guidelines and eligibility rules for Lancashire Combined County Authority (LCCA) or DfE/DWP, see page 9 for more details

**Melissa Boddy**  
**Courses taken: AAT Accounting Level 2 to Level 4**

Melissa began her journey at Lancaster & Morecambe College in 2023, enrolling on the AAT Accounting Level 2 course. Since then, she has progressed through her studies and is now completing her AAT Accounting Level 4.

Melissa chose to study at LMC as it is her local college and offered the course she was looking for. Her apprenticeship enables her to apply the theory and classroom learning from College directly in the workplace, helping her to develop practical skills and build valuable experience.

*The best parts of my course are learning new things that help me progress in my career and develop my personal knowledge. I also enjoy meeting other like-minded people on the course, as it creates a great support network.*

Our Accounting courses provide the knowledge and skills needed to succeed in the industry. Students cover key topics such as preparing financial statements, tax processes, management techniques and the principles of bookkeeping. Studying through an apprenticeship also allows learners to gain valuable practical experience in the workplace.

*The course has supported my career progression and given me a better understanding of the processes I complete at work. I have developed a range of valuable skills, particularly learning how to work under pressure and prioritise my workload.*



## Construction & Engineering

### How to Replace and Remove a Radiator

Tailored Learning

**30/09/2026** **Wed, 6pm-8pm**  
**30/09/2026** **Wed, 6pm-8pm**  
**B64178 Main Site 1 week £4.20** ◆

This course will help you learn how to isolate heating systems, drain and refill radiators, identify common issues, and ensure efficient operation.

### How to Repair a Toilet

Tailored Learning

**25/11/2026** **Wed, 6pm-8pm**  
**02/12/2026** **Wed, 6pm-8pm**  
**B64181 Main Site 1 week £4.20** ◆

This practical course will give you the knowledge and confidence to identify and repair common toilet faults.

### How to Change a Socket Switch Front, Understanding Fuses and Breakers

Tailored Learning

**24/02/2027** **Wed, 6pm-8pm**  
**B64185 Main Site 1 week £4.20** ◆

This course will help you build confidence in carrying out simple electrical tasks while gaining a better understanding of how household electrical systems are protected.

### How to Hang a Door

Tailored Learning

**03/10/2027** **Wed, 6pm-8pm**  
**B64187 Main Site 1 week £4.20** ◆

This course helps you develop valuable carpentry skills while gaining the confidence to complete door installation projects safely and accurately.

### How to Change a Tap Washer and Unblock a Sink

Tailored Learning

**14/10/2026** **Wed, 6pm-8pm**  
**21/10/2026** **Wed, 6pm-8pm**  
**B64179 Main Site 1 week £4.20** ◆

This course will help you learn how to identify and replace worn tap washers, diagnose the causes of blocked sinks, and safely use appropriate methods to clear blockages.

### How to Patch a Hole in Plasterwork

Tailored Learning

**20/01/2027** **Wed, 6pm-8pm**  
**20/01/2027** **Wed, 6pm-8pm**  
**B64183 Main Site 1 week £4.20** ◆

This course will teach you how to repair damaged plasterwork and restore walls to a smooth, professional finish.

### How to Fit Skirting Boards

Tailored Learning

**17/03/2027** **Wed, 6pm-8pm**  
**B64188 Main Site 1 week £4.20** ◆

This practical course teaches you how to measure, cut, and fit skirting boards to achieve a neat and professional finish.

### How to Repair Door Handles and Hinges

Tailored Learning

**03/03/2027** **Wed, 6pm-8pm**  
**B64186 Main Site 1 week £4.20** ◆

This course helps you develop valuable skills to fix doors including hinges, and misaligned frames.

### How to Connect Pipe Work

Tailored Learning

**11/11/2026** **Wed, 6pm-8pm**  
**18/11/2026** **Wed, 6pm-8pm**  
**B64180 Main Site 1 week £4.20** ◆

This course will help you learn how to measure, cut, prepare, and join pipes using appropriate tools and techniques.

### How to use Power Tools, Drills, Saws and Multi Tools

Tailored Learning

**02/03/2027** **Wed, 6pm-8pm**  
**B64184 Main Site 1 week £4.20** ◆

This course will help you to operate drills, saws, and multi-tools correctly, understand their different applications, and follow essential safety procedures.

### How to Build a Basic Garden Wall

Tailored Learning

**26/05/2027** **Wed, 6pm-8pm**  
**B64193 Main Site 1 week £4.20** ◆

On this course you will learn how to plan and set out the wall, prepare foundations, mix and apply mortar, lay bricks or blocks accurately, and achieve a strong, professional finish.

You may be eligible to study for FREE – look for courses marked with ◆ You may also be able to apply for an Adult Learner Loan – look for courses marked with ★ See page 8 for further details

**Please note:** all course fees are subject to funding guidelines and eligibility rules for Lancashire Combined County Authority (LCCA) or DfE/DWP, see page 9 for details

## Construction & Engineering

### How to Lay a Patio

Tailored Learning

**19/05/2027** **Wed, 6pm-8pm**  
**B64192 Main Site 1 week £4.20** ◆

This course will teach you the essential skills needed to plan, prepare, and lay a patio to a high standard. You will learn how to set out the area, prepare a solid foundation, mix and apply bedding materials, and lay paving slabs accurately for a durable and attractive finish.

### Principles of Warehousing

Distance Learning

TQUC Level 2 Certificate

**B36679 Online 25 weeks FREE**

This course is for those who want to gain an understanding and knowledge of health and safety processes, in a warehousing environment including manual handling, checking of stock, order processing, and the packing and storage of goods for dispatch.

New funding last year brought Home Improvement success to local residents as they undertook our regular 2-hour courses in skills such as laying a patio, hanging a door, and repairing a toilet.

Learners reported they had "gained confidence", "these courses have been brilliant courses" and "I put my new kitchen taps in, it's saved me a fortune."

Tutors were impressed with the learners' enthusiasm and readiness to have a go.

### TIG Welding

C&G Level 1 Introduction to Welding

**06/10/2026** **Tue, 6pm-9pm**  
**23/02/2027** **Tue, 6pm-9pm**  
**B13098 Main Site 14 weeks £640** ◆

C&G Level 2 Award Welding

**06/10/2026** **Tue, 6pm-9pm**  
**23/02/2027** **Tue, 6pm-9pm**  
**B24246 Main Site 14 weeks £640** ◆

TIG Welding focuses on the TIG welding process using high frequency TIG torch and manually fed filler wire to produce a range of joints in the vertical position, to be inspected via destructive testing.

### How to Repair & Maintain Garden Machinery

Tailored Learning

**16/06/2027** **Wed, 6pm-8pm**  
**B64194 Main Site 1 week £4.20** ◆

On this course you will learn how to identify common faults, carry out essential servicing tasks, maintain performance, and improve the lifespan of equipment such as lawnmowers, trimmers, and other garden tools

### 18th Edition Wiring Regulations

Coming soon, see website for details

This 18th Edition 3-day course covers the New Regulations, which became mandatory in January 2019. The course is aimed at Electrical Engineers, who are looking to update existing qualifications, as well as those wanting to join a Government approved Part P scheme provider.

### How to Mix Cement Concrete and Mortar

Tailored Learning

**12/05/2027** **Wed, 6pm-8pm**  
**B64191 Main Site 1 week £4.20** ◆

On this course you will learn the differences between each material, how to select the correct mix for the job, and the techniques required to achieve the right consistency.

### Initial Verification & Periodic Inspection & Testing of Electrical Installations

Level 3 Award

Coming soon, see website for details  
 This 5-day course is suitable for experienced electricians looking to improve skills and understanding of Initial Verification & Periodic Inspection & Testing of Electrical Installations. The course covers inspecting and testing of new, existing single, and three-phase installation in line with the requirements of BS 7671, as well as the correct completion of certification and reporting.

### Part Time Adult Advice & Enrolment Days

4 July & 19 August, 10am-3pm

### MMA Welding

C&G Level 1 Introduction to Welding

**06/10/2026** **Tue, 6pm-9pm**  
**23/02/2027** **Tue, 6pm-9pm**  
**B23671 Main Site 14 weeks £640** ◆

MMA Welding focuses on using flux coated rods to produce a range of joints in the flat position, to be visually inspected. Covering the basics of setting up, maintaining your equipment to tacking, welding various joint configurations and positions, you will develop skills, knowledge and confidence to tackle basic fabrication requirements whether at home or in the workplace.

### MIG Welding

C&G Level 1 Introduction to Welding

**06/10/2026** **Tue, 6pm-9pm**  
**23/02/2027** **Tue, 6pm-9pm**  
**B13099 Main Site 14 weeks £640** ◆

C&G Level 2 Award Welding

**06/10/2026** **Tue, 6pm-9pm**  
**23/02/2027** **Tue, 6pm-9pm**  
**B23878 Main Site 14 weeks £640** ◆

MIG Welding focuses on using a semi-automatic torch and spool fed wire to produce a range of joints in the flat position, to be visually inspected.



## Tourism & Hospitality

### Introduction to Home Baking

NCFE Entry 3 Award

**27/11/2026** **Fri, 9am-1pm**  
**B64446 Main Site 3 weeks £51.20** ◆

A taster in home baking is a beginners guide to the fundamental skills in home baking, where you will develop your skills to confidently produce a range of baked goods.

### Intermediate Cake Decoration (Creative Craft Cookery)

NCFE Level 2 Award

**16/04/2027** **Fri, 9am-1pm**  
**B64448 Main Site 10 weeks £135** ◆

During this Intermediate Professional Baking course you will further develop your professional baking skills, and will fine tune your finishing skills to execute professional standard baked goods.

### Chocolate & Confectionery (Creative Craft Cookery)

NCFE Level 1 Award

**08/10/2026** **Thu, 1pm-5pm**  
**B64442 Main Site 10 weeks £132.50** ◆

This course will build on your knowledge and skills of chocolate and confectionery.

### Principles of Customer Service

Distance Learning

TQUK Level 2 Certificate

**B36656 Online 25 weeks FREE**

This course will give you the knowledge that is required to work in a range of different environments in a customer service role. You will develop essential knowledge of how to carry out customer service related tasks, such as how to manage information and support events.

### Cake Decoration (Creative Craft)

NCFE Level 1 Award

**08/01/2027** **Fri, 9am-1pm**  
**B64447 Main Site 10 weeks £132.50** ◆

This Introduction to Professional Baking course is designed to explore your professional baking skills, and will begin with a range of different cakes and sponges, culminating in a celebration cake finale. No home study is required.

### Introduction to Chocolate (Creative Craft)

NCFE Entry 3 Award

**17/09/2026** **Thu, 1pm-5pm**  
**B64441 Main Site 3 weeks £51.20** ◆

An introduction to chocolate making.

### Intermediate Chocolate & Confectionery (Creative Craft Cookery)

Tailored Learning

**14/01/2027** **Thu, 1pm-5pm**  
**B64445 Main Site 10 weeks £135** ◆

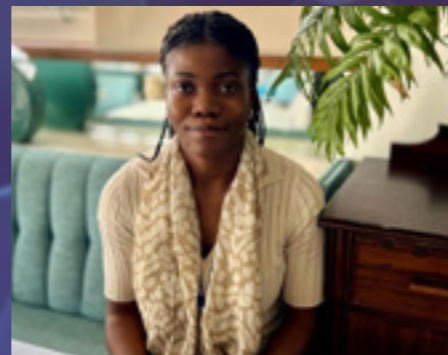
This course will build on your chocolate knowledge and will focus on decoration and using confectionery skills to take your creation to the next level. The course will support the development of your skills for employment within the catering Industry.

### Personal Licence Holders

Highfield Level 2 Award

**17/09/2026** **Thu, 9.30am-4pm**  
**19/11/2026** **Thu, 9.30am-4pm**  
**B64274 Main Site 1 day £125**

LMC are formally authorised by the British Institute of Inn keeping to provide training in the BIIAB Level 2 Award for Personal Licence Holders and qualifying examination. Under the Licensing Act 2003, anyone authorising the retail sale of alcohol will have to hold a personal licence.



### Omolade Dawodu

#### Patisserie & Confectionery Level 2

Omolade enjoys cooking and baking, and after completing the part time Patisserie & Confectionery Level 2 course, she decided to pursue her dream of becoming a pastry chef and food photographer, and start a new career. This has been made possible through securing employment at a prestigious establishment in London.

Omolade started the Patisserie & Confectionery Level 2 course in November 2024, as she had plenty of baking experience from running her own cake business. She was entirely self-taught, however, she had always wanted to learn how to make a wider range of baked goods in a formal setting.

*I enjoyed learning new skills, the majority of the things I learnt on the course I had never done before. It was great to learn from a very knowledgeable and skilled chef, and the course helped me grow in confidence and opened my eyes to new career possibilities in the future.*

During the course, she developed a range of valuable skills, including effective organisation, teamwork, creativity and the ability to work methodically in a structured environment.

*I have enjoyed meeting other people on the course and making new connections, allowing me to grow in confidence, gain new skills, and develop the ability to push myself to keep improving.*

Omolade shared that her greatest achievement from the course has been the opportunity to pursue her dream of becoming a pastry chef and exploring her passion for food photography.

*If you are considering doing the same course, I would encourage you to do so because you will learn far more than what is actually scheduled. You will gain a wealth of knowledge from both the lecturer and your fellow students. Doing this course has helped me realise how much I enjoy working in a kitchen environment, and creating baked goods that everyone enjoys.*



## Hairdressing & Beauty Therapy

### Beauty Therapy

Level 2 Diploma

**29/09/2026** **Tue, 5.30pm-8.30pm**  
**B32889 Main Site 22 weeks £358** ◆

This course offers the opportunity to learn the skills necessary for employment in a Beauty Therapy profession. You will learn techniques that are in demand from employers in the Beauty Therapy industry.

### Laser & Intense Pulsed Light

VTCT Level 4 Certificate

**17/09/2026** **Thu, 9.30am-2.30pm**  
**B36631 Main Site 13 weeks £1645** ★

This course will develop your skills and knowledge in laser and light treatments to reduce hair growth and application for rejuvenation of the skin. You will also develop your understanding of managing safe working environments and practices associated with these treatments, along with demonstrating client care and effective communication.

### Hairdressing

C&G Level 2 Certificate

**30/09/2026** **Wed, 5pm-9pm**  
**B31281 Main Site 32 weeks £374.80** ◆

This course focuses on the development of the underlying principles and practical skills required in the industry. You will gain a variety of skills such as shampooing, conditioning, colouring, dressing and styling hair. You will also learn basic cutting techniques.

### Barbering

Level 2 Certificate

**29/09/2026** **Tue, 5pm-8.30pm**  
**B32885 Main Site 32 weeks £336.29** ◆

This course focuses on the development of the underlying principles and practical skills required in the Barbering industry. You will gain a variety of skills such as consultation, shampooing and conditioning, styling men's hair and basic cutting techniques.

### Beauty Therapy

Level 3 Certificate

**30/09/2026** **Wed, 5pm-9pm**  
**B31656 Main Site 32 weeks £1645** ★

This course focuses on more advanced treatments which can include a variety of body massage techniques, advanced electrical facial treatments, and more holistic therapies such as stone therapy.

### Making the Most of Your Makeup Bag

Tailored Learning

**18/05/2027** **Tue, 5.30pm-8pm**  
**B64408 Main Site 1 week £4.20** ◆

This course is designed to help you get greater value and versatility from the cosmetics you already own. It explores how you can organise your makeup bag effectively, identify essential products, and use simple techniques to create a range of everyday and occasion looks without needing an extensive kit.

### Hairdressing

C&G Level 3 Certificate

**30/09/2026** **Wed, 4.30pm-9pm**  
**B32159 Main Site 32 weeks £1645** ★

This is an ideal course for those wishing to further their skills and knowledge in this vocation. The course is a mix of both theory and practical sessions which focus on advanced cutting, styling and colouring techniques.

### Hair Up

Tailored Learning

**05/12/2027** **Wed, 5.30pm-7.30pm**  
**B64348 Main Site 1 week £4.20** ◆

This practical course teaches you how to create a range of stylish hair-up looks suitable for everyday wear

**Please note:** all course fees are subject to funding guidelines and eligibility rules for Lancashire Combined County Authority (LCCA) or DfE/DWP, see page 9 for more details



### Nail Technology

C&G Level 2 Diploma

**30/09/2026** **Wed, 5pm-8.30pm**  
**B36919 Main Site 32 weeks £321.20** ◆

This course is designed to help you develop the basic skills and concepts associated with nail technology. You will learn various nail treatments such as fibreglass/wrap, U.V gel and the liquid and powder systems.

### Taking Your Makeup Bag from Day to Night

Tailored Learning

**05/11/2026** **Tue, 5.30pm-8pm**  
**B64409 Main Site 1 week £4.20** ◆

This practical course will show you how to transform your daytime makeup look into an evening style, using the products you already have in your makeup bag. You will learn techniques for enhancing your makeup, adding definition, refreshing your look, and creating a polished finish suitable for a variety of occasions.

### Curly Blow Dry

Tailored Learning

**14/04/2027** **Wed, 5.30pm-7.30pm**  
**B64347 Main Site 1 week £4.20** ◆

This course is designed to help you create smooth, voluminous, and long-lasting curls using professional blow-drying techniques.

**The Salon**  
Hairdressing & Beauty Therapy

Offering a variety of facial and body treatments and a range of hairdressing services, The Salon is open to students and public, and provides a real work environment for our students.

All enquiries **01524 521229** or **lmc.ac.uk**

You may be eligible to study for FREE – look for courses marked with ◆ You may also be able to apply for an Adult Learner Loan – look for courses marked with ★ See page 8 for further details





## Animal Studies

### Introduction To Animal Care

Tailored Learning  
**15/09/2026** **Tue, 5.30pm-8.30pm**  
**B64148 Main Site 6 weeks £37.80** ◆

The course is for anyone aged 19+ and interested in learning more about how to care for small pet animals. It is an introduction to the basics of animal husbandry and will provide a taster for those interested in progressing to the Practical Small Animal Care Skills Level 2.

### Practical Animal Care Skills

Animal Care & Welfare Level 2 Award  
**17/11/2026** **Tue, 5.30pm-8.30pm**  
**B64142 Main Site 14 weeks £134.20** ◆

This course is aimed at adults looking to gain further knowledge and skills in small animal care and welfare, and covers a range of practical animal care skills including handling and restraint, health care, health and safety, feeding and watering, maintaining accommodation, exercise and moving animals.

## Community Engagement

### Essential Digital Skills

Entry Level 3  
**Various 33-34 weeks £19.50** ◆

This course is suitable for those who are new to IT. If you can use a phone, but struggle to use a PC and want to improve your skills in 'home use' eg. online shopping, online safety, Microsoft Word, email and attachments, then this course may be for you.

### Digital & IT Skills

Entry Level  
**Various 34 weeks £42** ◆

This course is suitable for those who are confident with IT. Develop your skills in Microsoft Word including Mail Merge, Macros, Table of Contents, and Excel including complex formulae and functions, SUMIF, Pivot tables, Macros, Conditional formatting.

### Community Engagement

Entry Level  
**Various 30 weeks FREE** ◆

This course is suitable for those who need a confidence boost and are looking to get into or back to work. Through a stepped approach to learning you will be able to achieve bitesize qualifications in Personal Development, Managing Your Own Finance, Progression and Employability Skills.

### Essential Digital Skills

Level 1  
**Various 33 weeks £151.50**

This course is suitable for those who have some confidence and use of IT as part of their employment. If you need to improve your knowledge of Microsoft Word, Excel and building basic spreadsheets, then this course may be for you.

### Digital & IT Skills

Level 2  
**Various 34 weeks £218** ◆

This course is suitable for those who are confident with IT. Develop your skills in Microsoft Word including Mail Merge, Macros, Table of Contents, and Excel including complex formulae and functions, SUMIF, Pivot tables, Macros, Conditional formatting.

You may be eligible to study for FREE – look for courses marked with ◆ You may also be able to apply for an Adult Learner Loan – look for courses marked with ★ See page 8 for further details

**Please note:** all course fees are subject to funding guidelines and eligibility rules for Lancashire Combined County Authority (LCCA) or DfE/DWP, see page 9 for details



### Rosie Woodhouse

**Course: Animal Management Level 3**  
**After College: Veterinary Medicine (Preliminary Year) at University of Nottingham**

After completing her GCSEs at Queen Elizabeth School, Rosie joined LMC to study Animal Management Level 3. With a strong interest in working with animals, the course was a natural choice for her.

Rosie shared that she wanted to study and focused on animals rather than stay at school to do A levels. She looked at other colleges, but chose LMC because offered more hands-on experience with a wide variety of animals.

*The best part of my time at LMC was the practical work with the animals. It gave me the chance to handle species I hadn't worked with before, like chinchillas and ferrets. This experience has supported both my future studies and long term career, as I now have a broader understanding. It's also helped with my progression to university, as I now have a strong foundation in animal care and behaviour.*

*Another great opportunity that LMC gave me was the chance to go to Vancouver, Canada. This was an incredible experience, as I had never been abroad before. It allowed me to understand what it is like working in another country. We volunteered for an Owl Rehabilitation Centre and got to see birds that are not native to the UK, like bald eagles.*

While studying at LMC, Rosie had the opportunity to meet former Prime Minister Rishi Sunak as part of the Eden Project development in Morecambe. It was a memorable experience and a proud moment for her to represent the College.

*While at LMC, I became much more confident and independent. Before College, I was quite introverted and didn't feel comfortable asking questions, but over the two years, I gradually came out of my shell.*



## English, Maths & ESOL

### Maths & English Functional Skills

Level 1  
**Various workshops - see website for details**  
**Main Site 30 weeks FREE**

This course is suitable for those who are looking to further their Maths and/or English skills in work or study and need a Level 1 qualification, but do not wish to follow the one-year GCSE programme.

### Maths & English Functional Skills

Level 2  
**Various workshops - see website for details**  
**Main Site 20 weeks FREE**

This course is suitable for those who are looking to further their Maths and/or English skills in work or study and need a Level 2 qualification, but do not wish to follow the one-year GCSE programme.

English & Maths courses are free if you do not already have a GCSE Grade 4/C. If you already have GCSE Grade 4/C and wish to retake the cost is £500.

### English Language GCSE

OCR (9-1 Syllabus)  
**16/09/2026** **Wed, 5.30pm-8.30pm**  
**B34119 Main Site 30 weeks £500**

This course has been designed to help you explore communication, culture and creativity. You will read a variety of literary and non-fiction texts from across a range of genres and time periods, developing your independent and critical reading skills.

### Maths GCSE

AQA (9-1 Syllabus)  
**14/09/2026** **Tue, 9.30am-12.30pm**  
**B33388 Main Site 30 weeks £500**  
**15/09/2026** **Wed, 5.30pm-8.30pm**  
**B33388 Main Site 30 weeks £500**

On this course you'll improve your maths skills, and study towards either a Foundation (grades 1 – 5) or Higher (grades 4 – 9) GCSE qualification. The course is suitable for those wanting to improve their CV, gain access to university, enhance employment opportunities, to support children in their studies or for personal satisfaction.

## ESOL

### English for Speakers of Other Languages

Is English your second language? Do you need to develop your reading, writing, speaking and listening skills?

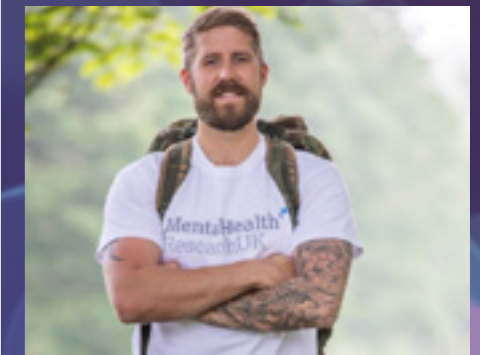
Our English Classes for Speakers of Other Languages provide a good opportunity to improve your reading, writing, speaking and listening skills. The classes are organised by level, and from the assessment session, the team will establish which is the best class for you, taking into account your other commitments.

You will be able to attend two classes a week, either here at College or in one of our many community venues. The classes may be free depending on your financial situation.

**Find out more by contacting [ESOLGroup@lmc.ac.uk](mailto:ESOLGroup@lmc.ac.uk)**

See page 9 for additional information

Part Time Adult Advice & Enrolment Days - 14 July & 19 August 2026, 10am-3pm



### Philip Angus

**Courses taken: GCSE's, Public Services and Sport**

Philip first came to LMC when he didn't receive the grades he wanted at high school. He made the decision to re-sit his GCSE's at College and during his time here, discovered his dreams of joining the Ministry Of Defence.

Once he had achieved his GCSEs he progressed onto the Public Service and Sport Diploma in September 2005. His tutor at the time, Joe Regan, talked to him about the RAF regiment and that inspired him to join as a Gunner.

*My tutors were extremely patient, inspiring and overall extremely nice people. This is something I took with me into my military career and something I wholeheartedly feel has benefited me throughout my career and allowed me to progress through the ranks.*

We asked Philip what skills and behaviours he learnt during his time at LMC and he told us the main behaviour he learnt was resilience. With resilience, he was able to learn from his own mistakes and he was honest in saying that he never wished to have to re-sit his GCSE's but owning it and understanding the reasons he had to re-sit them helped him move forward and helped him to become more aware of how not to make poor choices again.

Philip said choosing LMC for his studies was ultimately the reason he chose his specific career path and he puts the successes he has achieved down to the College and his tutor Joe, for pinpointing the right direction for him.

*Forging the correct friendships, making better and more informed choices and surrounding yourself by positive influences is key to achieving success.*

Philip is currently in charge of the department responsible for delivering mission critical training for the RAF aircrew personnel who are deploying all over the world, giving them the training and skills required if they ever need to take arms and how to survive in critical situations.





## Digital, Cyber & IT

### Cyber Security

Level 1 Award Gateway

**15/09/2026** Tue, 5.30pm-8pm  
**B36869 Main Site 12 weeks £95.50 ♦**

On this course, you will learn about cybercrime and the risks and effects it has on individuals and organisations. You will understand routine protective methods used to maintain cybersecurity including the principles of vulnerability and penetration testing and user access control.

### Excel Beginners

Tailored Learning Entry Level 1

Coming soon, see website for details

This workshop is designed for clients who are new to spreadsheets but are involved in using them in the workplace. Microsoft Excel is a very powerful spreadsheet application designed to save you time and make easy work of calculating, displaying and sharing data.

### Excel Advanced

Tailored Learning Level 2

This workshop is aimed at those with a clear working knowledge of Microsoft Excel who are involved in using spreadsheets each day and would like to introduce advanced techniques to automate everyday tasks. Excel is a very powerful spreadsheet application designed to save you time and make easy work of calculating, displaying and sharing data.

You may be eligible to study for FREE – look for courses marked with ♦ You may also be able to apply for an Adult Learner Loan – look for courses marked with ★ See page 8 for further details

**Please note:** all course fees are subject to funding guidelines and eligibility rules for Lancashire Combined County Authority (LCCA) or DfE/DWP, see page 9 for more details

### Cyber Security

Level 2 Award Gateway

**02/02/2027** Tue, 5.30pm-8pm  
**B36933 Main Site 12 weeks £95.50 ♦**

On successful completion, you will understand security protection and risk management issues, measures to protect IT systems and data from current, evolving threats, and be able to implement measures to protect IT systems and data. You will also look at current legal and ethical requirements, including ethical hacking, IT security policies and procedures.

### Excel Intermediate

Tailored Learning Level 1

Coming soon, see website for details

This one-day training course aims to give basic users of Microsoft Excel knowledge of commands and functions, which will make them more proficient in spreadsheet and development. How to apply these tools to solving their own business problems and good spreadsheet practice will also be covered.

**EMPLOYER HUB**  
 LMC

The Employer Hub at LMC offers a range of conference facilities and resources available to hire out as bespoke packages, alongside a huge range of training opportunities.

**lmc.ac.uk employers/training-opportunities**  
**01524 521292**

**CMI** **iosh** **IPAE**  
 Approved Training Centre



### Brendan Hunt

**Courses taken: Digital and IT Skills Level 2, IT Users Skills (ITQ) Level 3 Certificate BCS**

Brendan was finding more often than not, that his children and grandchildren were asking him questions he wasn't able to answer when it came to tech and IT. That is when he was introduced to learning at LMC through our offsite venue in the West End of Morecambe, The Link.

As a busy working parent and grandparent, the flexibility of the sessions at The Link allowed Brendan to fit his learning around his other commitments, such as work and childcare.

Due to an industrial injury, Brendan had to make a career change and was unsure on what it was he wanted to do. He visited LMC for a chat about his capabilities and options and was guided towards the Digital and IT Skills Level 2 Award as a starting point.

*I was asked lots questions from my children that I didn't know how to answer, so I thought about coming back to College. At first I was apprehensive as I hadn't been at school for 30+ years. I made inquiries at LMC and was guided to The Link which offered IT courses. I came and found it perfect for me. John is a very pleasant teacher and have picked up so many ICT skills. I can now show my children how to do something, instead of me asking them.*

After his first year of studying, Brendan's confidence and enjoyment for learning grew, so he moved onto the IT Users Skills (ITQ) Level 3 Certificate BCS, which opened up his employment opportunities. As well as developing his technical knowledge to pass the exams, Brendan has also developed his general IT skills from using Excel tables for personal bill management and also Word documents for work.

*Studying in the adult environment at The Link has made it easier to have a student-teacher relationship. It means you get more time to ask questions and get the help on a one to one basis as the class is a smaller.*



## Science, Health & Social Care

### Health & Social Care Professional

Ascentis Level 2 Certificate

**05/10/2026** Mon, 9.15am-12.15pm  
**B33773 Main Site 13 weeks £163.90 ♦**

**08/03/2027** Mon, 9.15am-12.15pm  
**B33773 Main Site 12 weeks £157.60 ♦**

This course will enable adults to return to study and increase their career prospects, or to progress onto a Level 3 course.

### Biology GCSE

AQA

**25/09/2026** Fri, 9.30am-3pm  
**B36151 Main Site 29 weeks £336.25 ♦**

This course is aimed at students who might require a GCSE in Science for further study at universities and progression. It is also suitable for anyone with an interest in biology and the natural world.

### Residential Childcare

Various funding pathways available  
 Free Courses for Jobs TQUK Level 3 Diploma

**B36023 Employer Premises £2882 ★**

This course is designed to help you develop the skills, knowledge and behaviours in the Residential Childcare industry. The aim of the course is to support you in taking your first steps into this specialist world, and build upon the skills already developed with employers.

**THE BAY**  
 RESTAURANT@LMC

Open Wednesdays and Thursdays during term time

**01524 521224**  
 or **lmc.ac.uk**



### Health & Social Care Professional

Ascentis Level 2 Extended Certificate

**05/10/2026** Mon, 9.15am-12.15pm  
**B33959 Main Site 13 weeks £189.90 ♦**

**08/03/2027** Mon, 9.15am-12.15pm  
**B33959 Main Site 12 weeks £183.60 ♦**

This course will enable adults to return to study and increase their career prospects, or to progress onto a Level 3 course.

### Psychology

Ascentis Level 2 Certificate

**06/10/2026** Tue, 5.30pm-8.30pm  
**B36935 Main Site 10 weeks £135 ♦**

This course is designed to provide learners with an effective experience in developing study skills and the initial stages of learning about the discipline in terms of the concepts, theories and perspectives that characterise psychology. The Certificate is intended to offer progression to higher-level study in psychology and also to a range of other social sciences, humanities and care courses.

### Leadership & Management for Residential Childcare

BTEC Level 5 Diploma

**B36075 Employer Premises £2,500 ★**

This Level 5 course focuses on industry-relevant learning, practical experiences, expert guidance and all in a supportive environment. Topics covered include a dive into the world of residential childcare with a curriculum tailored to real-world scenarios, from child development to safeguarding, it's all covered.

**Part Time Adult Enrolment Days**  
 14 July & 19 August •  
 10am-3pm



### Barbara McInnis

**Courses taken: Psychology Level 2 Certificate**

We are proud to celebrate with one of our students Barbara McInnis, who has recently achieved her Certificate in Psychology Level 2 course at the age of 91. Barbara has been featured in both local and national press for her inspiring new beginnings after the age of 60, as she has been breaking boundaries by taking up hobbies such as drumming and returning to education. She has embraced a renewed zest for life and is eager to explore as many new experiences as possible.

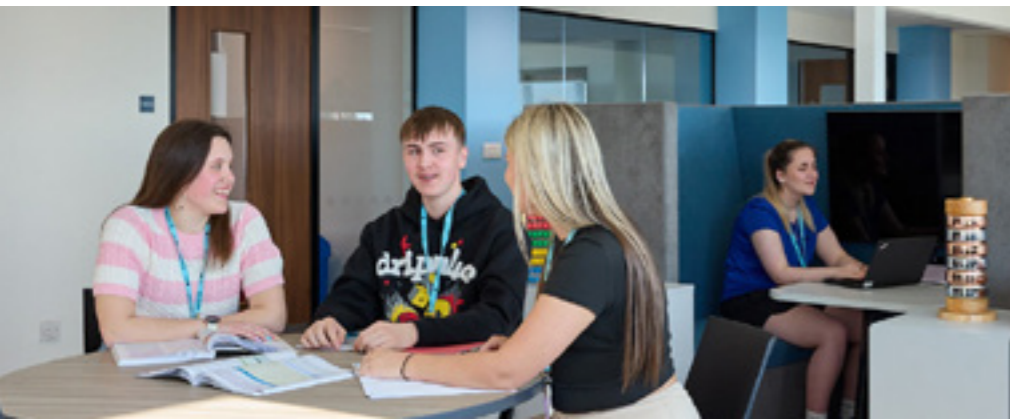
*After retiring, life was great for a while until I got bored. I saw an advert for a part time cooking courses at Lancaster & Morecambe College and, at the age of 70, decided to enrol. My mother had been a confectioner and a great cook, so I thought it was appropriate to follow in her footsteps and see what I could do! Last year, at the age of 90, the learning bug got me again. I am a drummer, which is very physical and satisfying in many ways, but I felt I needed some intellectual stimulation.*

Barbara's diverse life experiences led her to enrol on our part time Psychology course. She was driven by a desire to better understand human behaviour, thought processes, and the reasons behind peoples actions. She described the course tutor, Laura Walker, as an "excellent tutor". Throughout the course, Barbara's passion for learning continued to grow, and by the end of the programme, she was encouraged by Laura to consider progressing onto the Criminology course.

*This experience has been a real eye-opener as the amount of knowledge I needed to learn was challenging. However, once I'd added the final touches to my essay and poster, and submitted them, I started to think, "What next? My brain is still functioning..."*

Barbara's biggest accomplishment at LMC includes everything from simply attending and stepping into a new environment, to meeting new people, learning new things, conducting research, and writing essays!





## Science, Health & Social Care

### Understanding Principles of Dementia Care

Free Courses for Jobs  
NCFE Level 3 Certificate  
**B35937 Online 25 weeks FREE**

This course will help you to gain a good knowledge and understanding of how to support individuals with dementia, whether this be within your job role or your personal life.

### Principles of Care Planning

Distance Learning  
TQUK Level 2 Certificate

**B36658 Online 25 weeks FREE**

This course will develop your knowledge and understanding of the principles and processes of person-centred thinking, planning and review, as well as how to work with individuals to carry out activities specified in their care or support plan, including person-centred assessment, planning, implementation and review.

### Understanding Nutrition & Health

Distance Learning  
TQUK Level 2 Certificate

**B36650 Online 25 weeks FREE**

This course provides you with a range of underpinning knowledge in healthy eating, nutritional needs, weight management, eating disorders and food safety. It supports the Government's drive to empower individuals to make healthy choices.

### Mental Health Awareness

Distance Learning  
TQUK Level 1 Award

**B35476 Online 12 weeks FREE**

This course aims to increase your knowledge and understanding of mental health, as well as develop the skills that will enable you to progress your career.

### Self Harm and Suicide Awareness and Prevention

Distance Learning  
TQUK Level 2 Certificate

**B35876 Online 25 weeks FREE**

This qualification is aimed at anyone seeking to improve their understanding and awareness of suicide and self-harm.

### Principles of End of Life Care

Distance Learning  
TQUK Level 2 Certificate

**B36652 Online 25 weeks FREE**

This course is designed for a wide range of students who wish to gain an understanding of End of Life Care, including care planning, the support needed to manage pain and comfort, how dementia impacts on end of life care and the loss and grief process.

### Common Health Conditions

Distance Learning  
TQUK Level 2 Certificate

**B36653 Online 25 weeks FREE**

This course is designed for those looking to start work in, or already working in, health and social care, who would like an understanding of common health conditions and their effects on individuals.

### Understanding Mental Health

Free Courses for Jobs  
NCFE Level 3 Certificate

**B35932 Online 25 weeks £811 ★**

This course is designed for those with a good understanding of mental health, who may have already completed a Level 2 qualification in mental health or who are working in mental health services.

### Understanding Children and Young People's Mental Health

Distance Learning  
TQUK Level 2 Certificate

**B36659 Online 25 weeks FREE**

This course will increase your knowledge and awareness of children and young people's mental health, and could support progression on to further qualifications and into relevant employment in the health and social care or education sectors.

### Awareness of Mental Health Problems (RQF)

Distance Learning  
TQUK Level 2 Certificate

**B36651 Online 25 weeks FREE**

This course aims to raise your awareness of mental health and a range of mental health problems. You will gain an understanding of prevalent mental health problems and how you can work with or interact with individuals with them.

### Understanding Care & Management of Diabetes

Distance Learning  
TQUK Level 2 Certificate

**B36644 Online 25 weeks FREE**

This course will provide you with an understanding of the different types of diabetes and how they can occur, as well as increasing your knowledge on diabetes diagnosis and initial care. You will develop an awareness of how Type 2 diabetes can be delayed with lifestyle changes and will learn about on-going care and treatment of diabetes to control blood sugar levels.

You may be eligible to study for FREE – look for courses marked with ♦ You may also be able to apply for an Adult Learner Loan – look for courses marked with ★ See page 8 for further details

## Science, Health & Social Care

### Principles of Dementia Care

Distance Learning  
TQUK Level 2 Certificate

**B36643 Online 25 weeks FREE**

This course will develop your knowledge and understanding of the principles of caring for those with dementia. It covers person-centred care, the influence of positive communication methods, issues relating to the use of medication for those with dementia and the importance of providing appropriate activities.

### Adult Care

NCFE Level 2 Diploma

**B36802 Employer Premises £258.50♦**

Adult care workers are frontline staff who work in a care role to make a positive difference to someone's life when they are faced with physical, practical, social, emotional or intellectual challenges. This course is suitable for adult care workers wanting to upskill to enable people to live a more independent and fulfilling life. You must be employed in a care role in order to complete this qualification.

### Understanding the Safe Handling of Medicines in a Health Care Setting

Distance Learning  
TQUK Level 2 Certificate

**B36641 Online 25 weeks FREE**

This qualification aims to help you develop an understanding of the different types of medication and their use, as well as the procedures for obtaining, storing, administering and disposing of medication.

**Please note:** all course fees are subject to funding guidelines and eligibility rules for Lancashire Combined County Authority (LCCA) or DfE/DWP, see page 9 for more details

### Principles of Working with Individuals with Learning Disabilities

Distance Learning  
TQUK Level 2 Certificate

**B36646 Online 25 weeks FREE**

This course aims to give you the knowledge and understanding to work with individuals with learning disabilities or difficulties. You will explore the principles of safeguarding and positive risk taking and gain awareness of the autistic spectrum.

### Lead Adult Care

Free Courses for Jobs  
NCFE Level 3 Diploma

**B36801 Employer Premises £2882★**

Lead Adult Care Worker Level 3 is the perfect qualification for anyone looking to practice care in any social care setting. Lead adult care workers are frontline staff who help adults with care and support needs to achieve their personal goals and live as independently and safely as possible, enabling them to have control and choice in their lives.

# Part Time Adult Enrolment Days

14 July & 19 August  
10am-3pm

### Stacey Sweeting

**Course taken:** Access to HE Diploma

**Profession:** Studying at university to become an Occupational Therapist

Stacey began her journey with LMC in 2024, enrolling on the Access to HE Level 3 course. She is currently a full-time mum and volunteers with a local homeless charity, where she helps to befriend and support individuals who are homeless, at risk of homelessness, or have recently been rehoused. Stacey originally studied Hairdressing, but it wasn't the right fit for her. She later chose to study the Access to HE course particularly the Health & Social Care route.

*My time at LMC has made me more confident with academic structures for essays, reports and assignments. A highlight has been gaining confidence in Harvard referencing, which will help me at university. My time at College has helped me move into a professional space as I am now heading to the University of Cumbria to become a Occupational Therapist. I want to get a career that helps me give back to the NHS, as they have helped me through a major journey.*

Stacey shared that the most enjoyable part of the course was meeting new people and learning new skills that will benefit her at university. She said that her biggest takeaways from being a student at LMC was learning to be more patient with herself and giving herself more credit. Her proudest achievement since leaving College has been securing a place at University of Cumbria.

*The advice I would give to anyone considering applying to the Access course would be that it is intense and a lot of hard work to get the results. However, it is worthwhile and is a huge stepping stone to progressing to university.*

Stacey's journey shows how determination and the right support can lead to exciting new opportunities.





## Early Years & Education

### Understanding Behaviour that Challenges

Distance Learning  
TQUK Level 2 Certificate

**B36664 Online 25 weeks FREE**

This course aims to explore possible causes that could explain why people behave as they do, helping you to develop your understanding and deal with these situations in an appropriate way.

### Early Years Practitioner

NCFE Level 2 Diploma

**B64203 Employer Premises £259 ♦**

This role can be found in a range of private and public settings to deliver the Early Years Foundation Stage (EYFS) requirements set by Government for the learning, development and care of children from birth to five in both indoor and outdoor environments. You must be employed in a childcare role in order to complete this qualification.

### Volunteer Teaching Assistant Programme Progression Award

Gateway Level 1 Award

**24/09/2026 Thu, 9.30pm-2.30pm**  
**B36881 Main Site 5 weeks £84 ♦**

This qualification is designed to provide you with an understanding of the knowledge and skills needed when working directly with children and young people in school or college environment.

### Teaching Assistant Diploma

Free Courses for Jobs  
Level 3

**B64417 Employer Premises £1417 ★**

This qualification provides you with an in-depth understanding of the knowledge and skills needed for working with children and young people. Completion will ensure full competency as a Teaching Assistant.

### Special Educational Needs and Disability

Distance Learning  
TQUK Level 2 Certificate

**B64101 Online 25 weeks FREE**

Are you passionate about making a difference in the lives of individuals with special educational needs and disabilities? If so, this Level 2 Certificate in Special Educational Needs and Disability (RQF) Course is ideal for you.

### Early Years Workforce (Early Years Educator)

Free Courses for Jobs  
NCFE Level 3 Diploma

**B64205 Employer Premises £2882 ★**

This course is designed to help you develop the skills, knowledge and behaviours required to be a successful Early Year Educator. This course is designed to take one year to complete and will require you to be working for at least 30 hours a week in a suitable setting such as a nursery, children's centre or pre-school.

### Supporting Teaching & Learning

NCFE Level 2 Certificate

**B35726 Employer Premises £308.50 ★**

**14/01/2027 Thu, 9.30pm-2.30pm**  
**B35726 Main Site 5 weeks £258.75 ♦**

This course is designed to provide you with an understanding of the knowledge and skills needed when working directly with children and young people in a school or college environment. It covers a wide range of areas including children and young people's development, supporting positive behaviour and communication and professional relationships.

**Please note:** all course fees are subject to funding guidelines and eligibility rules for Lancashire Combined County Authority (LCCA) or DFE/DWP, see page 9 for more details

### Understanding Autism

Distance Learning  
TQUK Level 2 Certificate

**B36655 Online 25 weeks FREE**

This course aims to develop an understanding of autism and the principles of supporting individuals with autism – covering the person-centred approach and influence of positive communication methods, as well as how to support positive behaviour and how individuals with autism can be supported to live healthy, fulfilled lives.

### Understanding Autism

Free Courses for Jobs  
NCFE Level 3 Certificate

**B35934 Online 25 weeks FREE**

This qualification will increase your knowledge and understanding of autism, and could support progression on to further qualifications and into relevant employment in the health and social care or education sectors.

### Supporting Teaching & Learning

NCFE Level 3 Diploma

**B36236 Employer Premises £2225 ★**

This course will provide you with an understanding of the knowledge and skills needed when working directly with children and young people in school or college environments. It covers a wide range of areas including children and young people's development, supporting children and young people's positive behaviour and communication. You must be employed in a childcare role in order to complete this qualification.

You may be eligible to study for FREE – look for courses marked with ♦ You may also be able to apply for an Adult Learner Loan – look for courses marked with ★ See page 8 for further details

## Health & Safety

### Emergency First Aid at Work

QNUK Level 2

**18/08/2026 Tue, 9am-4.30pm**

**06/10/2026 Tue, 9am-4.30pm**

**01/12/2026 Tue, 9am-4.30pm**

**B34692 Main Site 1 day £125**

This course covers all topics necessary to meet the Health and Safety Executive's requirements for Emergency First Aid at Work, which complies with the Health and Safety (First Aid) Regulations 1981.

### IOSH Managing Safely

**21/10/2026 Wed-Fri, 9am-4.30pm**  
**B36618 Main Site 3 days £350**

This course is an introduction to the fundamentals of health and safety management in the workplace. It is aimed at all employees in any organisation, but particularly team leaders, supervisors and managers. This course will provide the knowledge, skills and confidence to contribute towards an organisations health and safety agenda.

## Taxi Driving

### Introduction to the Role of the Taxi and Private Hire Driver

**30/09/2026 Wed & Thu, 9.30am-5pm**

**14/10/2026 Wed & Thu, 9.30am-5pm**

**25/11/2026 Wed & Thu, 9.30am-5pm**

**B64437 Main Site 2 days £150**

This course is designed to support and enhance the knowledge of existing or prospective drivers to develop a career in transporting passengers. You will be introduced to the importance of delivering good customer service with good communications and positive working relationships.



## Sign Language

### British Sign Language

Level 1

**15/09/2026 Tue, 10am-12pm**

**16/09/2026 Wed, 6pm-8pm**

**B64268 Main Site 30 weeks £236 ♦**

Achieving this qualification means that you will be able to communicate with Deaf people in British Sign Language (BSL) on a range of themes that involve simple, everyday language use.



### Georgia O'Brien

**Courses taken: Sports Diploma Level 3**  
**Profession: Business Owner, Personal Trainer and Pilates Instructor**

Georgia loved her time at College as the course is perfect for anyone who loves sport and fitness and wants to work in the growing Sport & Leisure industry, or progress to university to study a sport-related subject.

*It was a brilliant course that ultimately led me to my current career. I had always been sporty and initially applied for the Sports course with the goal of becoming a PE Teacher. However, the course gave me valuable insight into what it was like to train and coach others, and I discovered how much I enjoyed helping people feel like the best version of themselves.*

She valued the wide range of opportunities offered by the Sports course at LMC, including teaching in schools and studying a broad variety of topics. These experiences played a key role in helping her progress to where she is today. As a Personal Trainer she designs personalised programmes, delivering one-to-one and group sessions, and supporting clients in achieving their health and fitness goals.

*While on the course, I was fortunate to be offered the opportunity to travel to Bulgaria, where I coached a range of sports to children from disadvantaged backgrounds. The course supported my professional development and prepared me for a career in the sports industry by strengthening my coaching and teaching skills through working with people of all ages. As a result, I developed strong communication and leadership skills, alongside increased confidence, teamwork, and the ability to motivate individuals of all abilities to achieve their goals.*

Whilst on the course, Georgia developed a genuine passion for helping others achieve their fitness goals. LMC provided her with the tools and knowledge needed to turn something she loves into a successful career.

# Frequently Asked Questions...

## How do I enrol?

Once you have been interviewed and offered a place, you will be advised of dates and times for enrolment or may be directed to enrol online. If directed to enrol online, log into your college prospectus account and complete the next sections. If you need to pay for your course, you can do so in person with Student Money in The Hex.

## How many days will I be in College?

Most of our part time courses are one evening a week, or one half day a week. The Access courses are classed as full time courses and are over three days a week but your tutor will share the timetable with you at interview.

## What happens if I miss a class?

Don't worry! If you are going to miss a session, please let your tutor know as soon as is possible. You will then be able to catch up; your tutor may send you work via email or MS Teams or share it with you the following week.

## What other qualifications do I need?

For many of our part time courses, you do not need to have any qualifications before you start learning with us. If you are not sure, please contact us to have a chat. All learners will complete an assessment in the first few weeks of the course to make sure the level of the course is right for you.

## What happens if I don't have access to a computer at home?

The College has laptops that we can lend you for the period of time you are on the course. You also have free access to the computers in The Hex.

## What support can I get from College if I'm struggling?

We have a wealth of support at College including our Pastoral Mentors, Safeguarding Manager, Additional Learning Support, Student Money team as well as extra support from your tutor themselves.

## How much does it cost?

Many of our adult courses will be FREE or at a reduced cost depending on your financial situation. Further information about course costs can be found on page 6. We also have a Student Money team who can be contacted on 01524 521469 if you want to ask a specific question.

## What are the class sizes?

The average adult class is 10-12 for our part time classes but may be higher on very popular courses.

Any further questions, please get in touch!

**01524 521385**





Lancaster &  
Morecambe  
College

Celebrating 200 Years of Learning

# Lancaster & Morecambe College

## Open Events:

- **Adult Enrolment Days**  
Tuesday 14 July 2026 • 10am - 3pm  
Wednesday 19 August 2026 • 10am - 3pm
- **GCSE Results Day**  
Thursday 20 August 2026 • 9am - 4pm
- **Open Evening & HE Fair**  
Wednesday 4 November 2026 • 4.30pm - 7pm
- **Open Evening**  
Tuesday 15 December 2026 • 4.30pm - 7pm
- **Apprenticeship Open Evening**  
Tuesday 9 February 2027 • 4.30pm - 7pm
- **Open Evening**  
Wednesday 28 April 2027 • 4.30pm - 7pm

**hello@lmc.ac.uk • 0800 306 306 • lmc.ac.uk**

*Call into The Hex and our staff will be happy to help*

